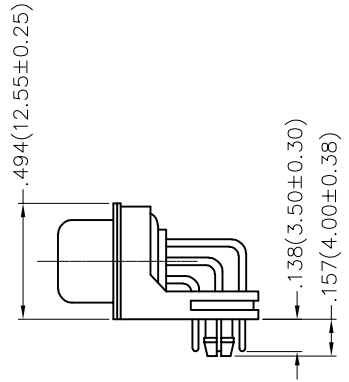
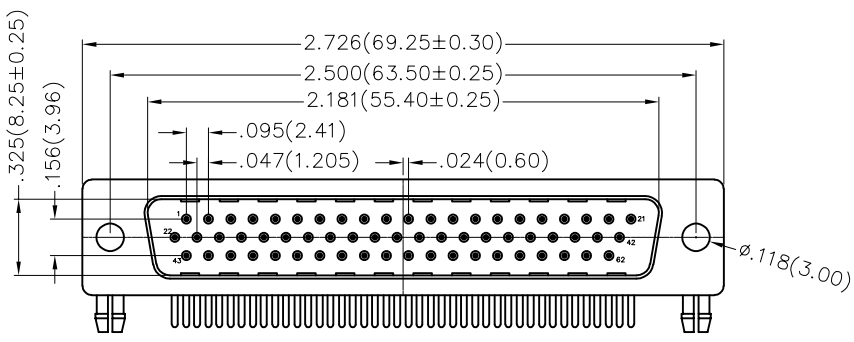


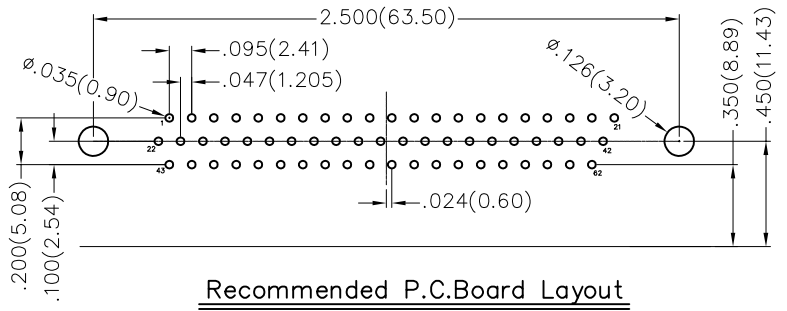
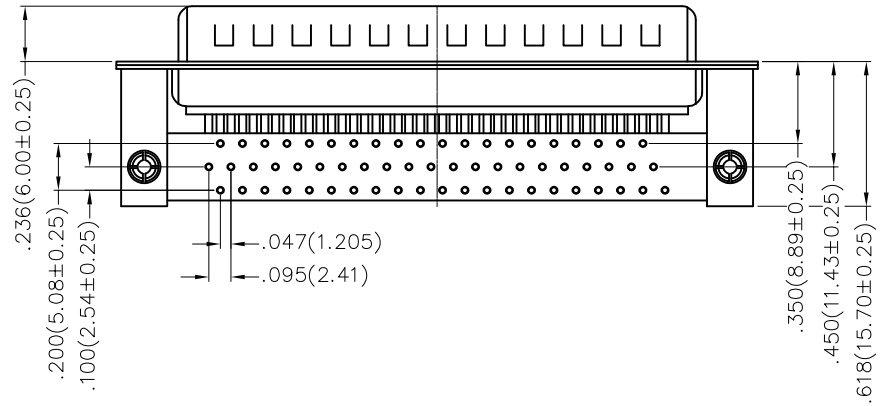
REV	LOCATIONS	DESCRIPTION	DATE	REVISER	APPD

A



B

C



D

Ordering Information

FDM 62 25 - M0 D B 1 XX XX X A
 1 2 3 4 5 6 7 8 9 10 11

E

SPECIFICATION

Electrical

Current Rating: 5A
 Voltage Rating: 300V
 Contact resistance: 30mΩ Max
 Insulation resistance: 5000MΩ Min. at 500V DC
 Dielectric Withstanding Voltage :1000V AC r.m.s Min
 Temperature Range-Operating: -55°C ~ +105°C

Material and Plating

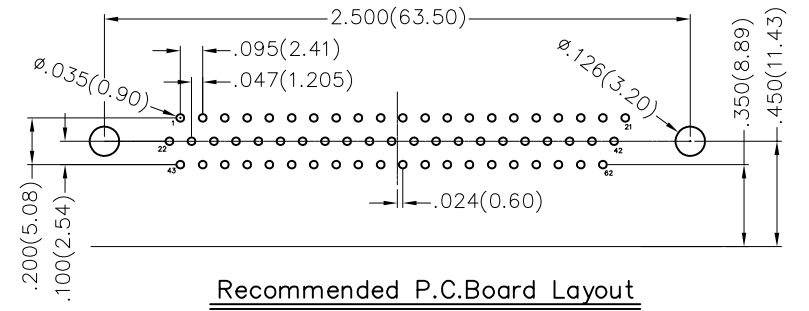
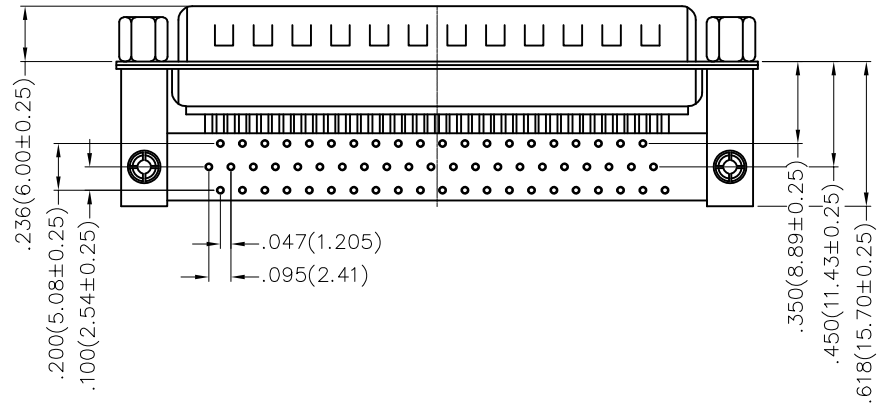
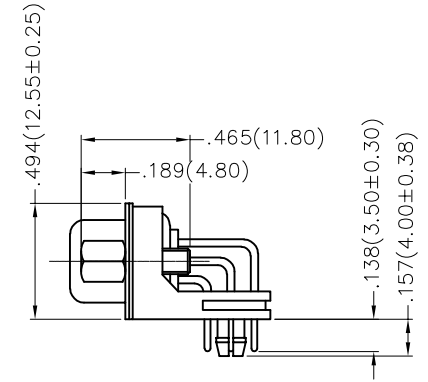
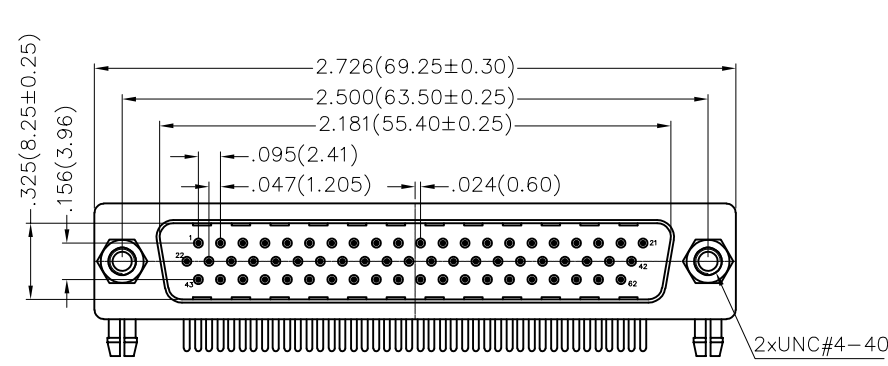
Insulator: PBT +30% G.F (UL94V-0)
 Contact: Brass/ Gold plated
 Shell: SPCC/ Front Nickel plated, Back Tin plated

F

1 Category	2 Circuits	3 Distinction No.	4 Type	5 Assembly Layout	
FDM-Machined pin D-SUB connector	62	25	M0-Male	D-DIP	
6 Entry Angle	7 Plating	8 Thickness of Plating	9 Color-Resin	10 Packaging	11 Distinction Type
B-90° Angle	1-Gold Plated	01-1μ" 03-3μ" Custom plate available	W1-White K6-Black	K-Tray L-Tube	A-A Type

 THIRD ANGLE PROJECTION	GENERAL TOLERANCES (UNLESS SPECIFIED)		APPROVE BY	DATE	PART NO.	ITEM NO.	 Building Technology Cornerstone
	X.±.012(0.30)	X.±5'	FRANK	09/SEP/19	FDM6225-MODB1XXXXXB	FDM6225	
DESIGN UNITS Inch (metric)	X.X±.008(0.20)	.X'±2'	CHECKED BY	DATE	TITLE	REV 0 SHEET NO. 1/1	
SCALE 5:1	X.XX±.006(0.15)	.XX'±1'	CHERRY	09/SEP/19	Machined pin D-SUB connector 90° Angle Male	THIS DRAWING CONTAINS INFORMATION THAT IS PROPRIETARY TO TXGA INDUSTRIAL ELECTRONICS(S.Z)CO.,LTD AND SHOULD NOT BE USED WITHOUT WRITTEN PERMISSION	
SIZE A4	X.XXX±.004(0.10)	.XXX'±0.5'	DRAWN BY	DATE	KATE 09/SEP/19		

REV	LOCATIONS	DESCRIPTION	DATE	REVISER	APPD



Ordering Information

FDM 62 25 - M0 D B 1 XX XX X B
 1 2 3 4 5 6 7 8 9 10 11

SPECIFICATION

Electrical

Current Rating: 5A
 Voltage Rating: 300V
 Contact resistance: 30mΩ Max
 Insulation resistance: 5000MΩ Min. at 500V DC
 Dielectric Withstanding Voltage :1000V AC r.m.s Min
 Temperature Range-Operating: -55°C ~ +105°C

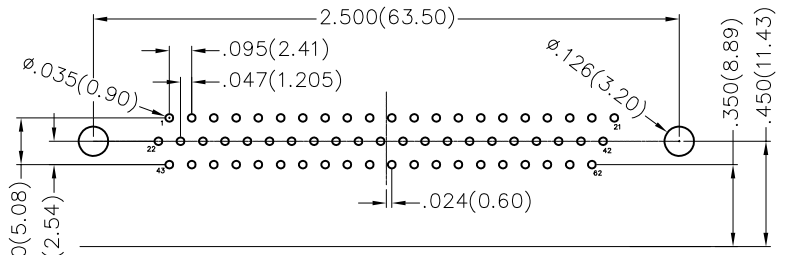
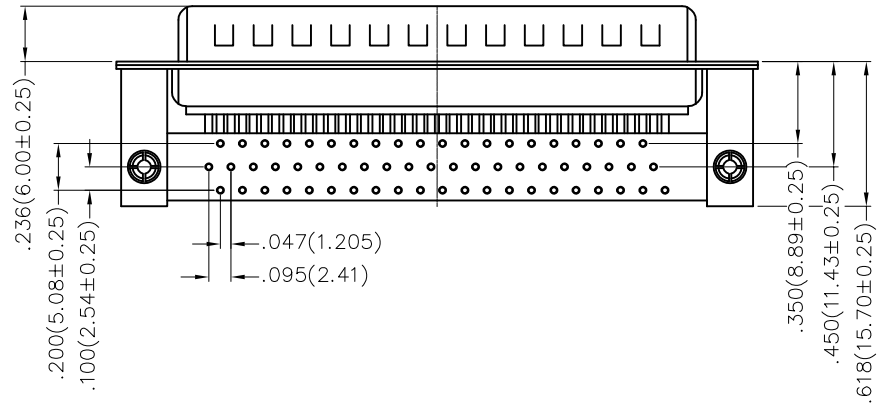
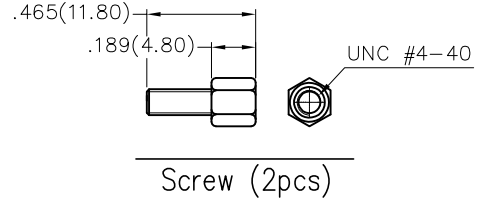
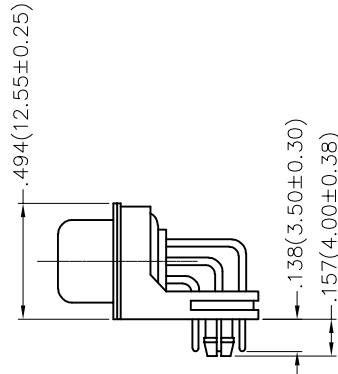
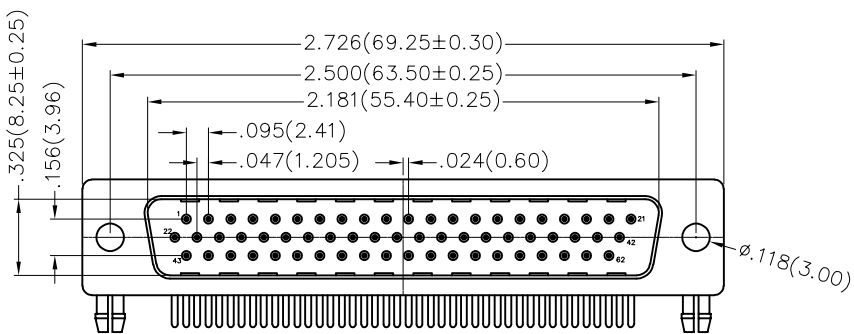
Material and Plating

Insulator: PBT +30% G.F (UL94V-0)
 Contact: Brass/ Gold plated
 Shell: SPCC/ Front Nickel plated, Back Tin plated

1 Category	2 Circuits	3 Distinction No.	4 Type	5 Assembly Layout	
FDM-Machined pin D-SUB connector	62	25	M0-Male	D-DIP	
6 Entry Angle	7 Plating	8 Thickness of Plating	9 Color-Resin	10 Packaging	11 Distinction Type
B-90° Angle	1-Gold Plated	01-1μ" 03-3μ" Custom plate available	W1-White K6-Black	K-Tray L-Tube	B-B Type

THIRD ANGLE PROJECTION	GENERAL TOLERANCES (UNLESS SPECIFIED)		APPROVE BY	DATE	PART NO.	ITEM NO.	 Building Technology Cornerstone
	X.±.012(0.30)	X.±5'	FRANK	09/SEP/19	FDM6225-MODB1XXXXXB	FDM6225	
DESIGN UNITS	X.X±.008(0.20)	.X'±2'	CHECKED BY	DATE	TITLE	REV 0 SHEET NO. 1/1	
Inch (metric)	X.XX±.006(0.15)	.XX'±1'	CHERRY	09/SEP/19	Machined pin D-SUB connector 90° Angle Male	THIS DRAWING CONTAINS INFORMATION THAT IS PROPRIETARY TO TXGA INDUSTRIAL ELECTRONICS(S.Z)CO.,LTD AND SHOULD NOT BE USED WITHOUT WRITTEN PERMISSION	
SCALE	X.XXX±.004(0.10)	.XX'±0.5'	DRAWN BY	DATE			
5:1			KATE	09/SEP/19			

REV	LOCATIONS	DESCRIPTION	DATE	REVISER	APPD



Recommended P.C.Board Layout

Ordering Information

FDM 62 25 - M0 D B 1 XX XX X C
 1 2 3 4 5 6 7 8 9 10 11

SPECIFICATION

Electrical

Current Rating: 5A
 Voltage Rating: 300V
 Contact resistance: 30mΩ Max
 Insulation resistance: 5000MΩ Min. at 500V DC
 Dielectric Withstanding Voltage :1000V AC r.m.s Min
 Temperature Range-Operating: -55°C ~ +105°C

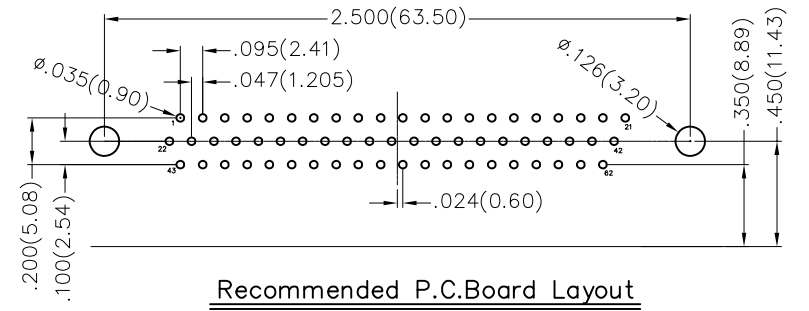
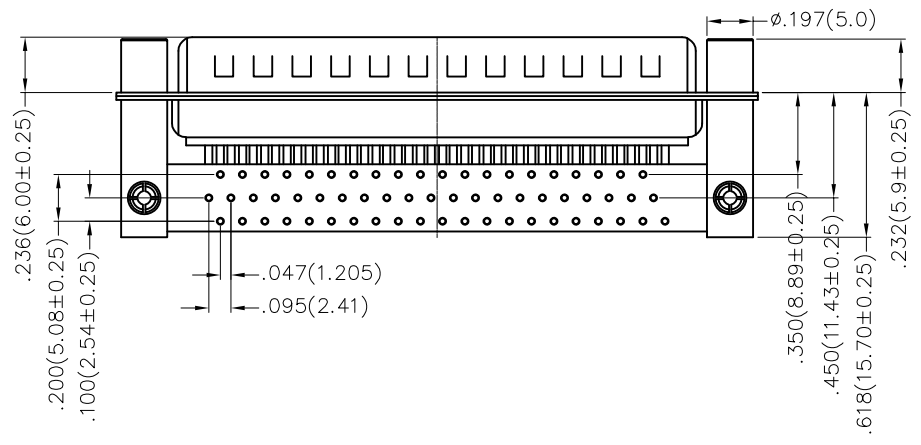
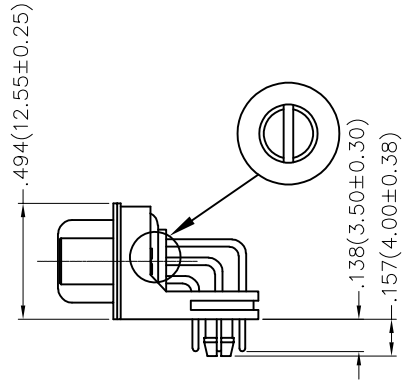
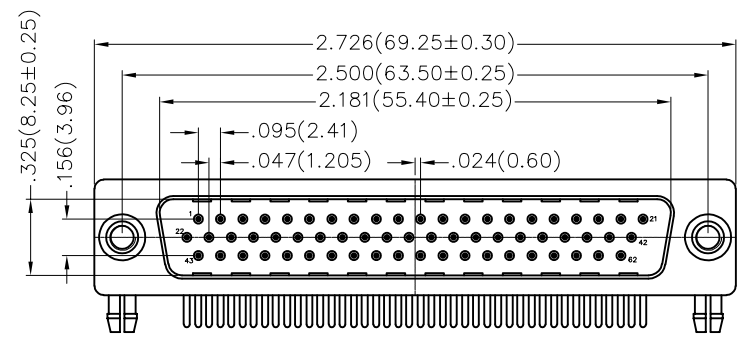
Material and Plating

Insulator: PBT +30% G.F (UL94V-0)
 Contact: Brass/ Gold plated
 Shell: SPCC/ Front Nickel plated, Back Tin plated

1 Category	2 Circuits	3 Distinction No.	4 Type	5 Assembly Layout
FDM-Machined pin D-SUB connector	62	25	M0-Male	D-DIP
6 Entry Angle	7 Plating	8 Thickness of Plating	9 Color-Resin	10 Packaging
B-90° Angle	1-Gold Plated	01-1μ" 03-3μ" Custom plate available	W1-White K6-Black	K-Tray L-Tube
				11 Distinction Type
				C-C Type

<p>THIRD ANGLE PROJECTION</p>	GENERAL TOLERANCES (UNLESS SPECIFIED)		APPROVE BY	DATE	PART NO.	ITEM NO.	<p>Building Technology Cornerstone</p>
	X.±.012(0.30)	X:±5'	FRANK	09/SEP/19	FDM6225-MODB1XXXXXC	FDM6225	
DESIGN UNITS	X.X±.008(0.20)	.X'±2'	CHECKED BY	DATE	TITLE		
Inch (metric)	X.XX±.006(0.15)	.XX'±1'	CHERRY	09/SEP/19	Machined pin D-SUB connector		
SCALE	X.XXX±.004(0.10)	.XXX'±0.5'	DRAWN BY	DATE	90° Angle Male		
5:1			KATE	09/SEP/19			
THIS DRAWING CONTAINS INFORMATION THAT IS PROPRIETARY TO TXGA INDUSTRIAL ELECTRONICS(S.Z)CO.,LTD AND SHOULD NOT BE USED WITHOUT WRITTEN PERMISSION							

REV	LOCATIONS	DESCRIPTION	DATE	REVISER	APPD



Ordering Information

FDM 62 25 - M0 D B 1 XX XX X D
 1 2 3 4 5 6 7 8 9 10 11

SPECIFICATION

Electrical

Current Rating: 5A
 Voltage Rating: 300V
 Contact resistance: 30mΩ Max
 Insulation resistance: 5000MΩ Min. at 500V DC
 Dielectric Withstanding Voltage :1000V AC r.m.s Min
 Temperature Range-Operating: -55°C ~ +105°C

Material and Plating

Insulator: PBT +30% G.F (UL94V-0)
 Contact: Brass/ Gold plated
 Shell: SPCC/ Front Nickel plated, Back Tin plated

1 Category	2 Circuits	3 Distinction No.	4 Type	5 Assembly Layout	
FDM-Machined pin D-SUB connector	62	25	M0-Male	D-DIP	
6 Entry Angle	7 Plating	8 Thickness of Plating	9 Color-Resin	10 Packaging	11 Distinction Type
B-90° Angle	1-Gold Plated	01-1μ" 03-3μ" Custom plate available	W1-White K6-Black	K-Tray L-Tube	D-D Type

 THIRD ANGLE PROJECTION	GENERAL TOLERANCES (UNLESS SPECIFIED)		APPROVE BY FRANK	DATE 09/SEP/19	PART NO. FDM6225-MODB1XXXXXD	ITEM NO. FDM6225	 Building Technology Cornerstone	
	DESIGN UNITS Inch (metric)	X.±.012(0.30) X.X±.008(0.20)	X'±5' .X'±2'	CHECKED BY CHERRY	DATE 09/SEP/19	TITLE Machined pin D-SUB connector 90° Angle Male		REV 0
SCALE 5:1	SIZE A4	X.XX±.006(0.15) X.XXX±.004(0.10)	.XX'±1' .XX'±0.5'	DRAWN BY KATE	DATE 09/SEP/19	THIS DRAWING CONTAINS INFORMATION THAT IS PROPRIETARY TO TXGA INDUSTRIAL ELECTRONICS(S.Z)CO.,LTD AND SHOULD NOT BE USED WITHOUT WRITTEN PERMISSION		