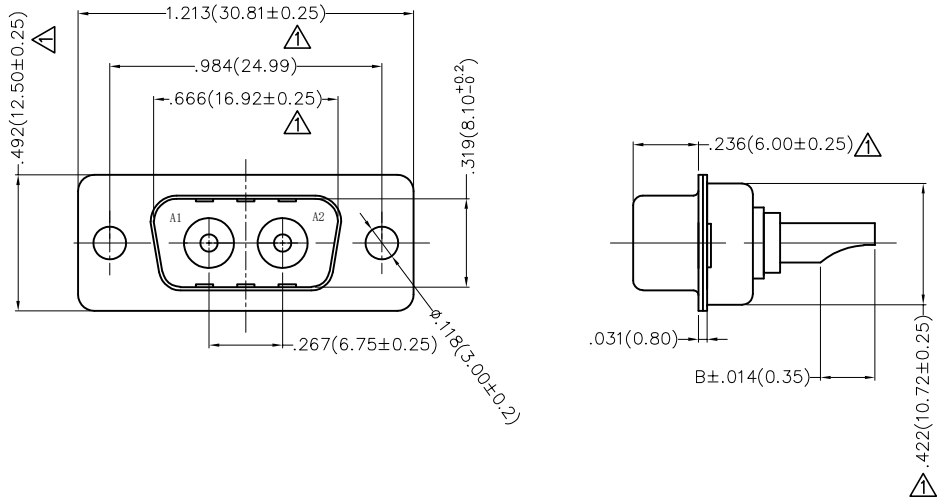


REV	LOCATIONS	DESCRIPTION	DATE	REVISER	APPD
1	△	Size & Tolerance changes	08/JUN/22	MATT	CHERRY

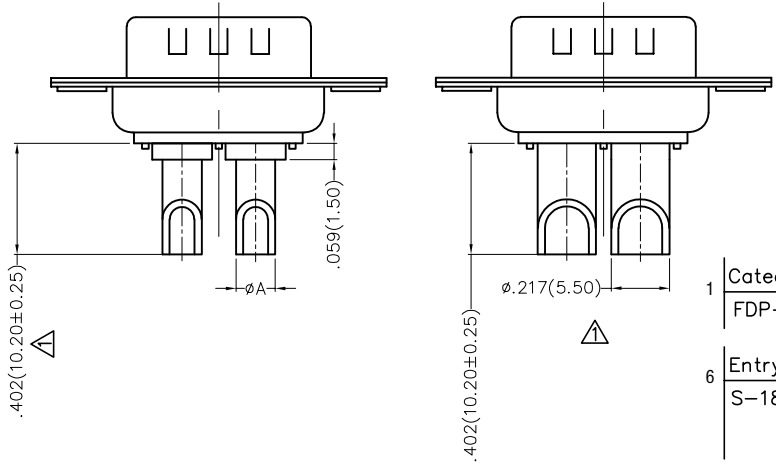
**SPECIFICATIONS**

**Electrical Characteristic**  
 Current Rating: 10 to 30A (Power contacts)  
 Voltage Rating: 300V  
 Contact Resistance: 5mΩ Max.  
 Insulation Resistance: 5000 MΩ Min.  
 Dielectric Withstanding Voltage: 1000V AC r.m.s Min  
 Temperature Range-Operating: -55°C ~ +105°C

**Material and plating**  
 Shell: Steel, Nickel Plated 80μ" Min  
 Back Shell: Steel, Tin Plated 100μ" Min  
 Insulator: Glass Filled Thermoplastic (UL 94V-0)  
 Power Contacts: Brass/ Gold Plated



Type	Part NO.	A	B △	Wire	Current Rating(A)
A	FDP0201-MOWS1XXK6KA	∅.098(2.50)	.177(4.50)	14#~16#	10
B	FDP0201-MOWS1XXK6KB	∅.142(3.60)	.197(5.00)	10#~12#	20
C	FDP0201-MOWS1XXK6KC	∅.173(4.40)	.217(5.50)	8#~10#	30
D	FDP0201-MOWS1XXK6KD	∅.217(5.50)	.217(5.50)	6#~8#	40



**Ordering Information**

FDP 02 01 — M0 W S 1 XX K6 K X  
 1 2 3 4 5 6 7 8 9 10 11

1	Category FDP-Hight current D-SUB connector	2	Circuits 02-2W2	3	Distinction No. 01	4	Type M0-Male	5	Assembly Layout W-Welding Type		
6	Entry Angle S-180° Vertical	7	Plating 1-Gold Plated	8	Thickness of Plating 03-3μ" 15-15μ" Custom Plate Available	9	Color-Resin K6-Black	10	Packaging K-Tray	11	Distinction Type A-Type A B-Type B C-Type C D-Type D

<p>THIRD ANGLE PROJECTION</p>	GENERAL TOLERANCES (UNLESS SPECIFIED) X.±.012(0.30) X:±5' X.X±.008(0.20) .X:±2' X.XX±.006(0.15) .XX:±1' X.XXX±.004(0.10) .XXX:±0.5'		APPROVE BY FRANK CHECKED BY CHERRY DRAWN BY JACOB	DATE 19/JUL/13 DATE 19/JUL/13 DATE 19/JUL/13	PART NO. FDP0201-MOWS1XXK6KX TITLE Hight current D-SUB connector 2W2 180° Vertical Male	ITEM NO. FDP0201-M	<p>Leader Of Industry</p>
	DESIGN UNITS Inch (metric)	SCALE 5:1	SIZE A4	THIS DRAWING CONTAINS INFORMATION THAT IS PROPRIETARY TO TXGA INDUSTRIAL ELECTRONICS(S.Z)CO.,LTD AND SHOULD NOT BE USED WITHOUT WRITTEN PERMISSION	REV 1	SHEET NO. 1/2	