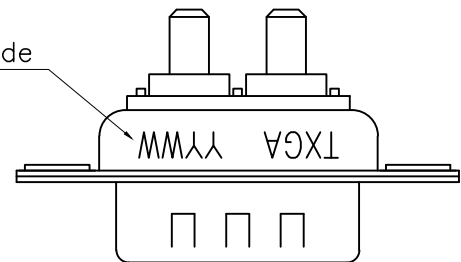


REV	LOCATIONS	DESCRIPTION	DATE	REVISER	APPD

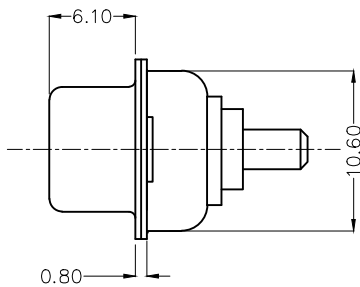
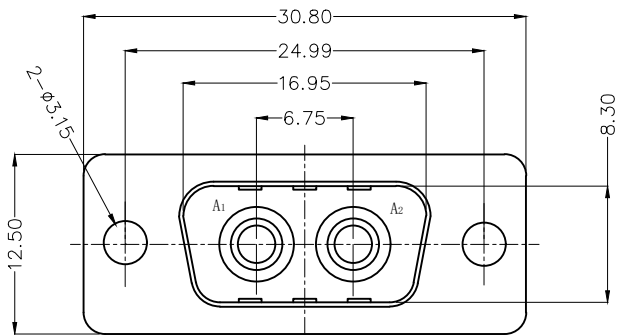
Date Code



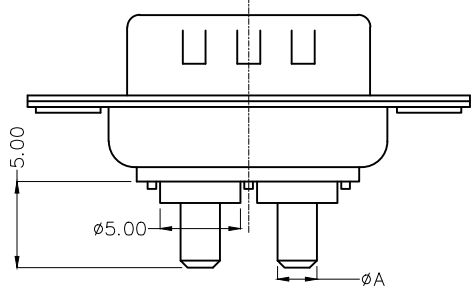
SPECIFICATIONS

Electrical Characteristic
 Current Rating: 10 to 40A (Power contacts)
 Voltage Rating: 300V
 Contact Resistance: 5mΩ Max.
 Insulation Resistance: 5000 MΩ Min.
 Dielectric Withstanding Voltage: 1000V AC r.m.s Min
 Temperature Range-Operating: -55°C ~ +105°C

Material and plating
 Shell: Steel, Nickel Plated 80μ" Min
 Back Shell: Steel, Tin Plated 100μ" Min
 Insulator: PBT (UL 94V-0)
 Power Contacts: Brass/ Gold Plated



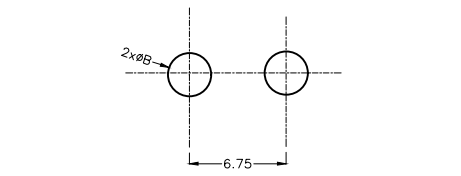
Type	Part NO.	øA	PCB. øB	Current Rating(A)
A	FDP0205-MODS1XXK6KA	1.80	2.00	10
B	FDP0205-MODS1XXK6KB	2.80	3.00	20
C	FDP0205-MODS1XXK6KC	3.30	3.50	30
D	FDP0205-MODS1XXK6KD	3.80	4.00	40



Ordering Information

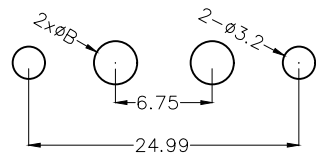
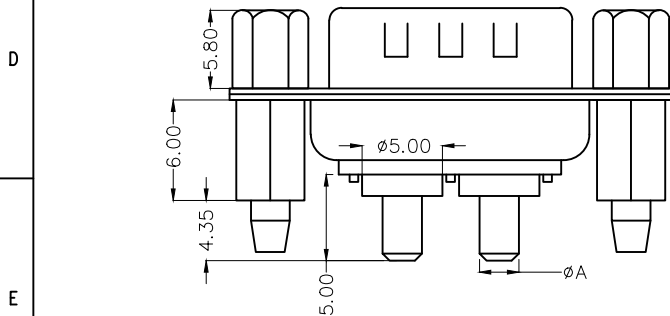
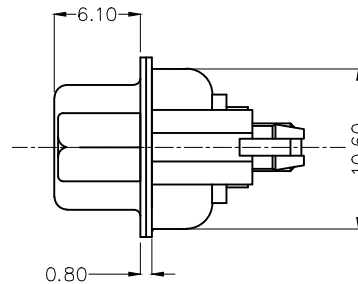
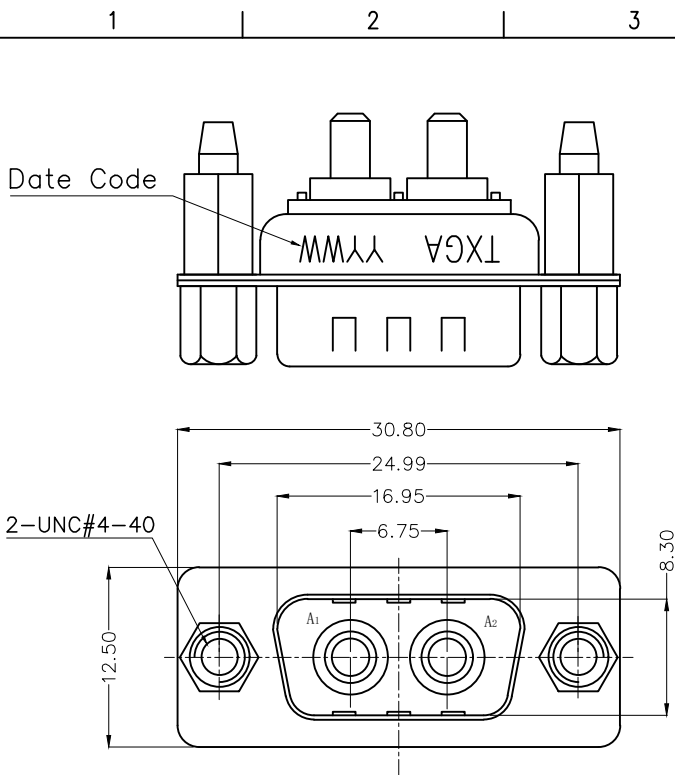
FDP 02 05 - M0 D S 1 XX K6 K X
 1 2 3 4 5 6 7 8 9 10 11

1 Category FDP-Hight current D-SUB connector	2 Circuits 02-2W2	3 Distinction No. 05	4 Type MO-Male	5 Assembly Layout D-DIP
6 Entry Angle S-180° Vertical	7 Plating 1-Gold Plated	8 Thickness of Plating 01-1μ" 30-30μ" Custom Plate Available	9 Color-Resin K6-Black	10 Packaging K-Tray
			11 Distinction Type A-Type A B-Type B C-Type C D-Type D	



Recommended P.C.Board Layout

<p>THIRD ANGLE PROJECTION</p>	GENERAL TOLERANCES (UNLESS SPECIFIED) X. ±0.30 X.* ±5° X.X ±0.20 X.X* ±2° X.XX ±0.15 X.XX* ±1° X.XXX ±0.10 X.XXX* ±0.5°		APPROVE BY LEO	DATE 02/AUG/23	PART NO. FDP0205-MODS1XXK6KX	ITEM NO. FDP0205-M	<p>Building Technology Cornerstone</p>
	DESIGN UNITS METRIC	CHECKED BY GISELLE	DATE 02/AUG/23	TITLE High current D-SUB connector 2W2 180° Vertical Male		REV 0 SHEET NO. 1/1	
SCALE 5:1	SIZE A4	DRAWN BY NICK	DATE 02/AUG/23	THIS DRAWING CONTAINS INFORMATION THAT IS PROPRIETARY TO TXGA INDUSTRIAL ELECTRONICS(S.Z)CO.,LTD AND SHOULD NOT BE USED WITHOUT WRITTEN PERMISSION			



Recommended P.C.Board Layout

REV	LOCATIONS	DESCRIPTION	DATE	REVISER	APPD

SPECIFICATIONS

Electrical Characteristic

- Current Rating: 10 to 40A (Power contacts)
- Voltage Rating: 300V
- Contact Resistance: 5mΩ Max.
- Insulation Resistance: 5000 MΩ Min.
- Dielectric Withstanding Voltage: 1000V AC r.m.s Min
- Temperature Range-Operating: -55°C ~ +105°C

Material and plating

- Shell: Steel, Nickel Plated 80μ" Min
- Back Shell: Steel, Tin Plated 100μ" Min
- Insulator: PBT (UL 94V-0)
- Power Contacts: Brass/ Gold Plated
- Board Lock: Copper Alloy/ Tin Plated
- Screw: Carbon steel/Nickel Plated
- Salt spray :24H Min.

Type	Part NO.	φA	PCB. φB	Current Rating(A)
A	FDP0205-MODS1XXK6KAA	1.80	2.00	10
B	FDP0205-MODS1XXK6KBA	2.80	3.00	20
C	FDP0205-MODS1XXK6KCA	3.30	3.50	30
D	FDP0205-MODS1XXK6KDA	3.80	4.00	40

Ordering Information

FDP 02 05 - M0 D S 1 XX K6 K X A
 1 2 3 4 5 6 7 8 9 10 11 12

1 Category FDP-Hight current D-SUB connector	2 Circuits 02-2W2	3 Distinction No. 05	4 Type M0-Male	5 Assembly Layout D-DIP	6 Entry Angle S-180° Vertical
7 Plating 1-Gold Plated	8 Thickness of Plating 01-1μ" 30-30μ" Custom Plate Available	9 Color-Resin K6-Black	10 Packaging K-Tray	11 Distinction Type A-Type A B-Type B C-Type C D-Type D	12 Type A-Type A

 THIRD ANGLE PROJECTION	GENERAL TOLERANCES (UNLESS SPECIFIED)		APPROVE BY LEO	DATE 02/AUG/24	PART NO. FDP0205-MODS1XXK6KXA	ITEM NO. FDP0205-M	 Building Technology Cornerstone
	X. ±0.30	X.* ±5'	CHECKED BY GISELLE	DATE 02/AUG/24	TITLE High current D-SUB connector 2W2 180° Vertical Male		
DESIGN UNITS METRIC	X.X ±0.20	X.X' ±2'	DRAWN BY NICK	DATE 02/AUG/24	THIS DRAWING CONTAINS INFORMATION THAT IS PROPRIETARY TO TXGA INDUSTRIAL ELECTRONICS(S.Z)CO.,LTD AND SHOULD NOT BE USED WITHOUT WRITTEN PERMISSION		
SCALE 5:1	SIZE A4	X.XX ±0.15	X.XX' ±1'	X.XXX ±0.10	X.XXX' ±0.5'		