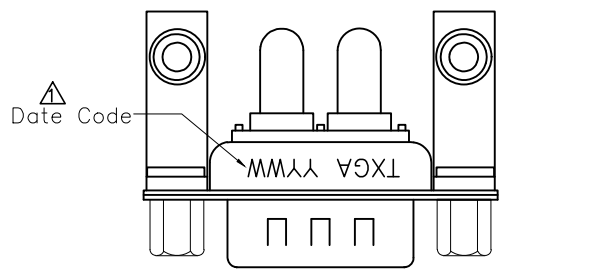


1 2 3 4 5 6 7 8

REV	LOCATIONS	DESCRIPTION	DATE	REVISER	APPD
1	△	Add marking code	13/Jan/25	NICK	LEO
2	△	Size change	19/Jan/25	NICK	LEO



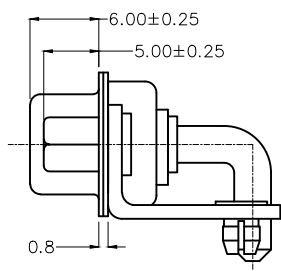
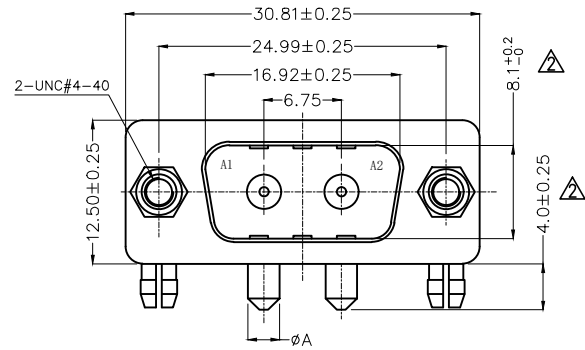
SPECIFICATIONS

Electrical Characteristic  
 Current Rating: 10 to 40A (Power contacts)  
 Voltage Rating: 300V  
 Contact Resistance: 5mΩ Max.  
 Insulation Resistance: 5000 MΩ Min.  
 Dielectric Withstanding Voltage: 1000V AC r.m.s Min  
 Temperature Range-Operating: -55°C ~ +105°C

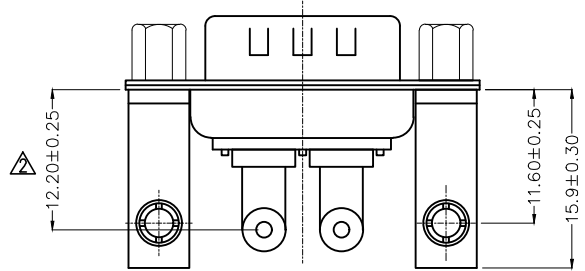
Material and plating  
 Shell: Steel, Nickel Plated 80μ" Min  
 Back Shell: Steel, Tin Plated 100μ" Min  
 Insulator: Glass Filled Thermoplastic (UL 94V-0)  
 Power Contacts: Brass/ Gold Plated

A  
B  
C  
D  
E  
F

A  
B  
C  
D  
E  
F



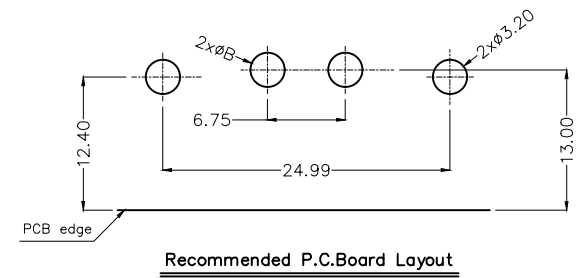
Type	Part NO.	ØA	PCB. ØB	Current Rating(A)
A	FDP0209-MODB1XXK6KA	1.70	2.00	10
B	FDP0209-MODB1XXK6KB	2.75	3.00	20
C	FDP0209-MODB1XXK6KC	3.30	3.60	30
D	FDP0209-MODB1XXK6KD	3.80	4.10	40



Ordering Information

FDP 02 09 — M0 D B 1 XX K6 K X  
 1 2 3 4 5 6 7 8 9 10 11

1 Category FDP-Hight current D-SUB connector	2 Circuits 02-2W2	3 Distinction No. 09	4 Type M0-Male	5 Assembly Layout D-DIP
6 Entry Angle B-90° Angle	7 Plating 1-Gold Plated	8 Thickness of Plating 03-3μ" 15-15μ" Custom Plate Available	9 Color-Resin K6-Black	10 Packaging K-Tray
				11 Distinction Type A-Type A B-Type B C-Type C D-Type D



THIRD ANGLE PROJECTION	GENERAL TOLERANCES (UNLESS SPECIFIED)		APPROVE BY FRANK	DATE 19/JUL/13	PART NO. FDP0209-MODB1XXK6KX	ITEM NO. FDP0209-M	 Building Technology Cornerstone
	X. ±0.30	X.* ±5°	CHECKED BY CHERRY	DATE 19/JUL/13	TITLE Hight current D-SUB connector 2W2 90° Angle Male		
DESIGN UNITS METRIC(mm)	X.X ±0.20	X.X* ±2°	DRAWN BY JACOB		DATE 19/JUL/13		THIS DRAWING CONTAINS INFORMATION THAT IS PROPRIETARY TO TXGA INDUSTRIAL ELECTRONICS(S.Z)CO.,LTD AND SHOULD NOT BE USED WITHOUT WRITTEN PERMISSION
SCALE 5:1	SIZE A4	X.XX ±0.15	X.XX* ±1°				
		X.XXX ±0.10	X.XXX* ±0.5°				

1 2 3 4 5 6 7 8