

REV	LOCATIONS	DESCRIPTION	DATE	REVISER	APPD
1	△	Add marking code	13/Jan/25	NICK	LEO
2	△	Version change	25/Aug/25	NICK	LEO

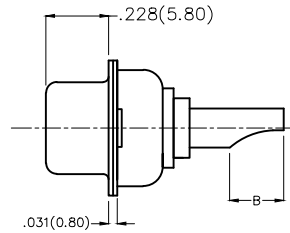
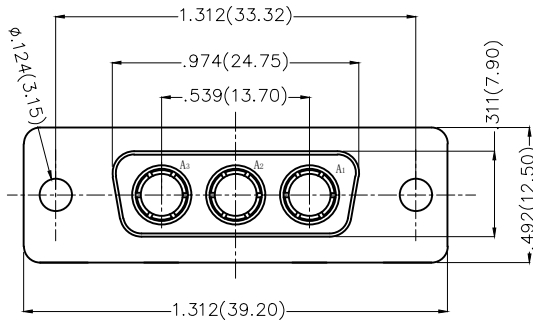
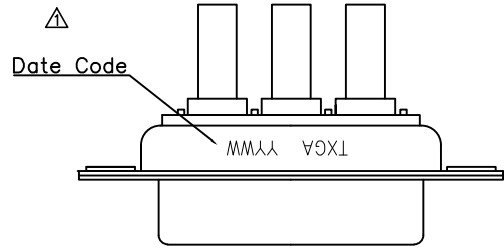
SPECIFICATIONS

Electrical Characteristic

Current Rating: 10 to 40A (Power contacts)  
Voltage Rating: 300V  
Contact Resistance: 5mΩ Max.  
Insulation Resistance: 5000 MΩ Min.  
Dielectric Withstanding Voltage: 1000V AC r.m.s Min  
Temperature Range-Operating: -55°C ~ +105°C

Material and plating

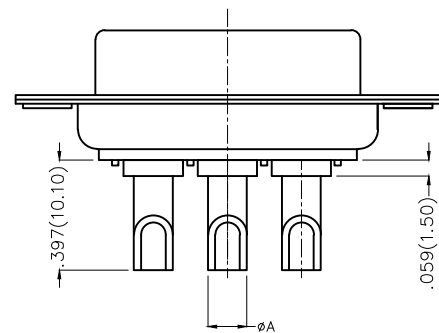
Shell: Steel, Nickel Plated 80μ" Min  
Back Shell: Steel, Tin Plated 100μ" Min  
Insulator: Glass Filled Thermoplastic (UL 94V-0)  
Power Contacts: Brass/ Gold Plated



Type	Part NO.	A	B	Wire	Current Rating(A)
A	FDPO301-FOWS1XXK6KA	∅.102(2.60)	.177(5.50)	14#~16#	10
B	FDPO301-FOWS1XXK6KB	∅.142(3.60)	.197(5.50)	10#~12#	20
C	FDPO301-FOWS1XXK6KC	∅.173(4.50)	.217(5.50)	8#~10#	30
D	FDPO301-FOWS1XXK6KD	∅.215(5.40)	.217(5.50)	6#~8#	40

Ordering Information

FDP 03 01 - FO W S 1 XX K6 K X  
1 2 3 4 5 6 7 8 9 10 11



1 Category FDP-Hight current D-SUB connector	2 Circuits 03-3W3	3 Distinction No. 01	4 Type FO-Female	5 Assembly Layout W-Welding Type
6 Entry Angle S-180° Vertical	7 Plating 1-Gold Plated	8 Thickness of Plating 03-3μ" 15-15μ" Custom Plate Available	9 Color-Resin K6-Black	10 Packaging K-Tray
			11 Distinction Type A-Type A B-Type B C-Type C D-Type D	

 THIRD ANGLE PROJECTION	GENERAL TOLERANCES (UNLESS SPECIFIED)		APPROVE BY FRANK	DATE 19/JUL/13	PART NO. FDPO301-FOWS1XXK6KX	ITEM NO. FDPO301-F	 Leader Of Industry
	DESIGN UNITS Inch (metric)	X.±.012(0.30) X.X±.008(0.20)	X.±5° .X'±2°	CHECKED BY CHERRY	DATE 19/JUL/13	TITLE Hight current D-SUB connector 3W3 180° Vertical Female	
SCALE 5:1	SIZE A4	X.XX±.006(0.15) X.XXX±.004(0.10)	.XX'±1° .XXX'±0.5°	DRAWN BY JACOB	DATE 19/JUL/13	THIS DRAWING CONTAINS INFORMATION THAT IS PROPRIETARY TO TXGA INDUSTRIAL ELECTRONICS(S.Z)CO.,LTD AND SHOULD NOT BE USED WITHOUT WRITTEN PERMISSION	