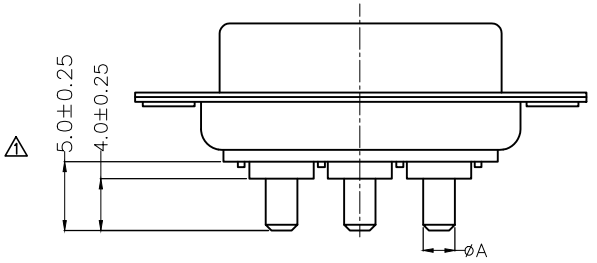
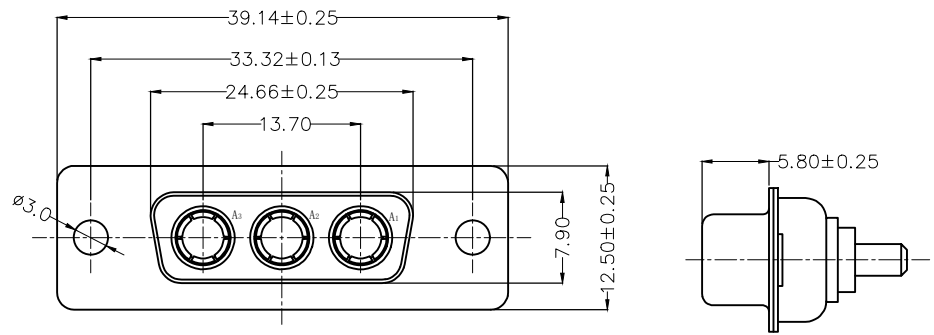
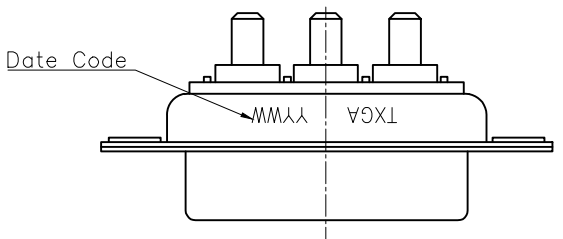


REV	LOCATIONS	DESCRIPTION	DATE	REVISER	APPD
1	△	Change dimension	25/Aug/25	NICK	LEO

SPECIFICATIONS

Electrical Characteristic
 Current Rating: 10 to 40A
 Voltage Rating: 300V
 Contact Resistance: 5mΩ Max.
 Insulation Resistance: 5000 MΩ Min.
 Dielectric Withstanding Voltage: 1000V AC r.m.s Min
 Temperature Range-Operating: -55°C ~ +105°C

Material and plating
 Shell: Steel, Nickel Plated 80μ" Min
 Back Shell: Steel, Tin Plated 100μ" Min
 Insulator: PBT (UL 94V-0)
 Signal contacts: Brass/ Gold Plated
 Power Contacts: Brass/ Gold Plated
 Salt spray :24H Min.

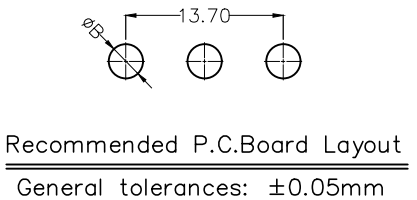


Type	Part NO.	∅A	PCB. ∅B	Current Rating(A)
A	FDP0306-F0DS1XXBKKA	1.70	2.00	10
B	FDP0306-F0DS1XXBKKB	2.75	3.00	20
C	FDP0306-F0DS1XXBKKC	3.30	3.60	30
D	FDP0306-F0DS1XXBKKD	3.80	4.10	40

Ordering Information

FDP 03 06 — F0 D S 1 XX BK K X
 1 2 3 4 5 6 7 8 9 10 11

1	D-sub Connector Category FDP-Power Type	2	Circuits 03-3W3	3	Distinction No. 06	4	Type F0-Female	5	Assembly Layout D-DIP	6	Entry Angle S-180° Vertical
7	Plating 1-Gold Plated	8	Thickness of Plating 03-0.075μm 15-0.375μm 30-0.75μm	9	Color-Resin BK-Black	10	Packaging K-Tray	11	Type A-Type A C-Type C B-Type B D-Type D		



<p>THIRD ANGLE PROJECTION</p>	GENERAL TOLERANCES (UNLESS SPECIFIED)		APPROVE BY LEO	DATE 19/JUL/13	PART NO. FDP0306-F0DS1XXBKXX	ITEM NO. FDP0306	<p>Building Technology Cornerstone</p>
	X. ±0.30	X.* ±5°	CHECKED BY GISELLE	DATE 19/JUL/13	TITLE Hight current D-SUB connector 3W3 180° Vertical Female(DIP)		
DESIGN UNITS METRIC(mm)	X.X ±0.20	X.X* ±2°	DRAWN BY MATT	DATE 19/JUL/13	THIS DRAWING CONTAINS INFORMATION THAT IS PROPRIETARY TO TXGA INDUSTRIAL ELECTRONICS(S.Z)CO.,LTD AND SHOULD NOT BE USED WITHOUT WRITTEN PERMISSION		
SCALE 5:1	SIZE A4	X.XX ±0.15					
		X.XXX ±0.10					