

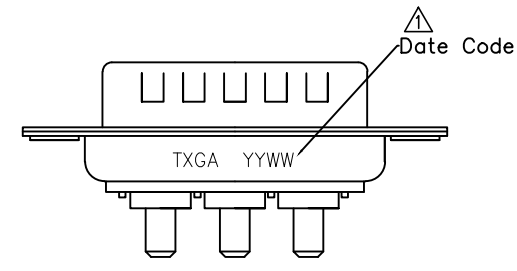
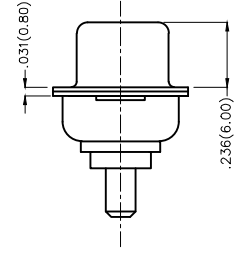
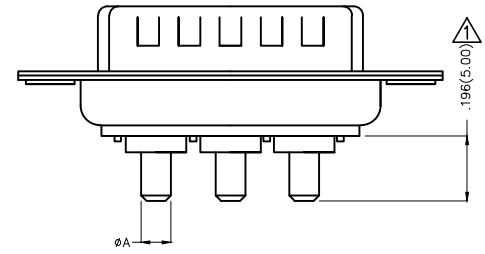
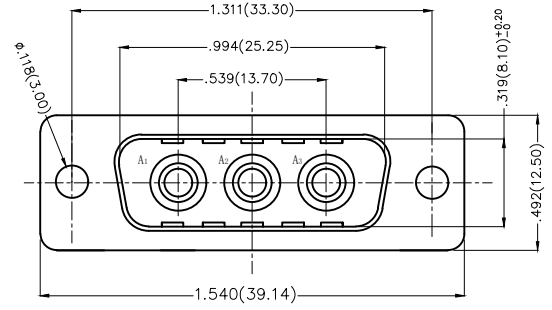
REV	LOCATIONS	DESCRIPTION	DATE	REVISER	APPD
1	△	1.Add marking code 2.Update version	18/Mar/25	NICK	LEO

Materials AND Finish

Shell : Steel Or Brass Material, Tin/Ni Or Au Finished
 Connector Insulator : PBT Thermoplastic,30% Glass Filled, UL 94V-0 Rated
 High Power Contact Material: Brass, 3u"~50u" Gold Plated

Electrical Characteristics

High Power Contact Current Rating :10,20,30,Or 40 Amps
 High Power Contact Resistance : 5.0Milliohms Max. △
 Dielectric Withstanding Voltage : 1000 V Ac For 1 Minute
 Insulation Resistance : 5000 Megaohms Min.
 Temperature Raing : -55°C ~ +125°C

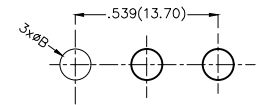


Type	Part NO.	φA	PCB. φB	Current Rating(A)
A	FDP0306-MODS1XXK6KA	.067(1.70)	.079(2.00)	10
B	FDP0306-MODS1XXK6KB	.108(2.75)	.118(3.00)	20
C	FDP0306-MODS1XXK6KC	.130(3.30)	.142(3.60)	30
D	FDP0306-MODS1XXK6KD	.150(3.80)	.161(4.10)	40


Ordering Information

FDP 03 06 — M0 D S 1 XX K6 K X
 1 2 3 4 5 6 7 8 9 10 11

1 D-sub Connector Category FDP—Power Type	2 Circuits 03—3W3	3 Distinction No. 06	4 Type M0—Male	5 Assembly Layout D—DIP	6 Entry Angle S—Vertical
7 Plating 1—Gold Plated	8 Thickness of Plating 03—3u" 15—15u" 30—30u"	9 Color—Resin K6—Black	10 Packaging K—Tray	11 Pin Type A—Type A C—Type C B—Type B D—Type D	

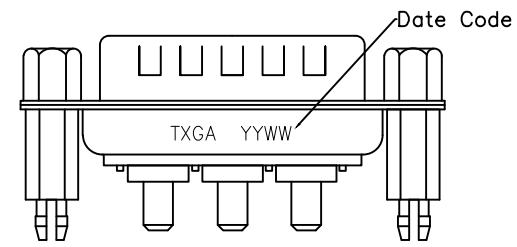
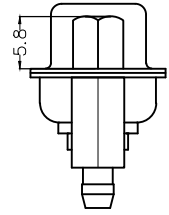
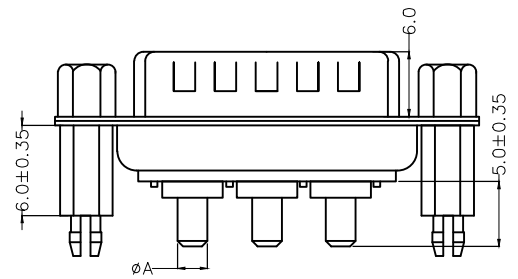
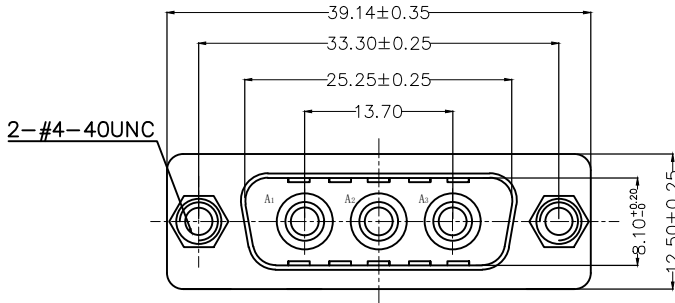


Recommended P.C.Board Layout

THIRD ANGLE PROJECTION	GENERAL TOLERANCES (UNLESS SPECIFIED)		APPROVE BY FRANK	DATE 19/JUL/13	PART NO. FDP0306-MODS1XXK6KX	ITEM NO. FDP0306-M	 Leader Of Industry
	DESIGN UNITS Inch (metric)	X.±.012(0.30) X.X±.008(0.20) X.XX±.006(0.15) X.XXX±.004(0.10)	X.±5" .X±2" .XX±1" .XXX±0.5"	CHECKED BY CHERRY	DATE 19/JUL/13	TITLE POWER MACHINED CONTACT MALE 3W3 CONN	
SCALE 5:1	SIZE A4		DRAWN BY JACOB	DATE 19/JUL/13	THIS DRAWING CONTAINS INFORMATION THAT IS PROPRIETARY TO TXGA INDUSTRIAL ELECTRONICS(S.Z)CO.,LTD AND SHOULD NOT BE USED WITHOUT WRITTEN PERMISSION		
					REV 1	SHEET NO. 1/1	

REV	LOCATIONS	DESCRIPTION	DATE	REVISER	APPD

SPECIFICATIONS
 Electrical Characteristic
 Current Rating: 10 to 40A
 Voltage Rating: 300V
 Contact Resistance: 5mΩ Max.
 Insulation Resistance: 5000 MΩ Min. at 500V DC
 Dielectric Withstanding Voltage: 1000V AC r.m.s Min
 Temperature Range-Operating: -55°C ~ +125°C
 Material and plating
 Shell: Steel, Nickel Plated 80μ" Min
 Back Shell: Steel, Tin Plated 100μ" Min
 Insulator: PBT (UL 94V-0)
 Power Contacts: Brass/ Gold Plated
 Board Lock: Copper Alloy/ Tin Plated
 Screw: steel/ Nickel Plated
 Salt spray :24H Min.

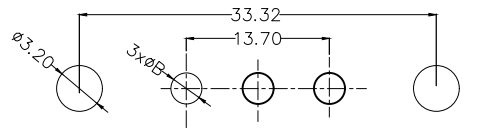


Ordering Information

Type	Part NO.	A	B	Current Rating(A)
A	FDPO306-MODS1XXK6KAA	φ1.70	φ2.00	10
B	FDPO306-MODS1XXK6KBA	φ2.75	φ3.00	20
C	FDPO306-MODS1XXK6KCA	φ3.30	φ3.60	30
D	FDPO306-MODS1XXK6KDA	φ3.80	φ4.10	40

FDP 03 06 — M0 D S 1 XX K6 K X A
 1 2 3 4 5 6 7 8 9 10 11 12

1 D-sub Connector Category FDP-Power Type	2 Circuits 03-3W3	3 Distinction No. 06	4 Type M0-Male	5 Assembly Layout D-DIP	6 Entry Angle S-Vertical
7 Plating 1-Gold Plated	8 Thickness of Plating 03-3u" 15-15u" 30-30u"	9 Color-Resin K6-Black	10 Packaging K-Tray	11 Pin Type A-Type A B-Type B C-Type C D-Type D	12 Product Type A-A Type



Recommended P.C.Board Layout

<p>THIRD ANGLE PROJECTION</p>	GENERAL TOLERANCES (UNLESS SPECIFIED) X. ±0.30 X.* ±5' X.X ±0.20 X.X* ±2' X.XX ±0.15 X.XX* ±1' X.XXX ±0.10 X.XXX* ±0.5"		APPROVE BY LEO 25/SEP/24	DATE 25/SEP/24	PART NO. FDPO306-MODS1XXK6KXA	ITEM NO. FDP0306-M	<p>Building Technology Cornerstone</p>
	DESIGN UNITS METRIC	CHECKED BY GISELLE 25/SEP/24	DATE 25/SEP/24	TITLE High current D-SUB connector 3W3 180° Vertical Male	REV 0	SHEET NO. 1/1	
SCALE 5:1	SIZE A4	DRAWN BY NICK 25/SEP/24	DATE 25/SEP/24	THIS DRAWING CONTAINS INFORMATION THAT IS PROPRIETARY TO TXGA INDUSTRIAL ELECTRONICS(S.Z)CO.,LTD AND SHOULD NOT BE USED WITHOUT WRITTEN PERMISSION			