

REV	LOCATIONS	DESCRIPTION	DATE	REVISER	APPD

1. Electrical Characteristic
- 1.1 Current Rating
Power Contacts: 10 to 40A
 - 1.2 Voltage Rating: 300V
 - 1.3 Contact Resistance: 5 Milliohms Max
 - 1.4 Insulation Resistance: 5000 Megaohms Min.
 - 1.5 Dielectric Withstanding Voltage : 1000V AC r.m.s Min

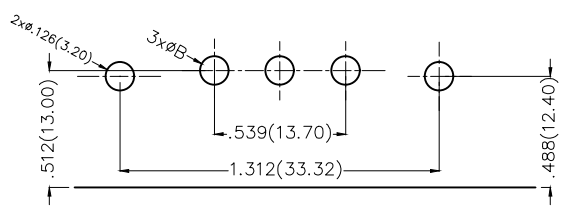
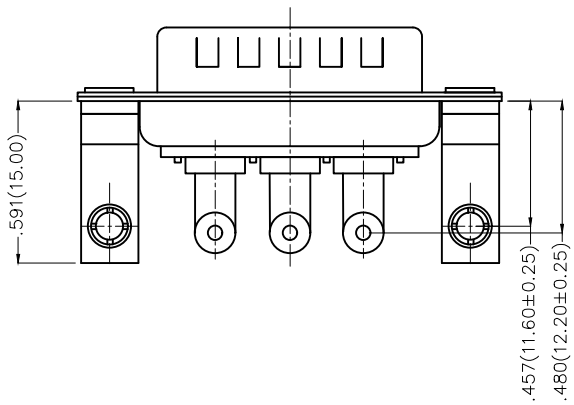
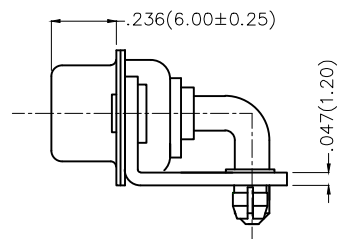
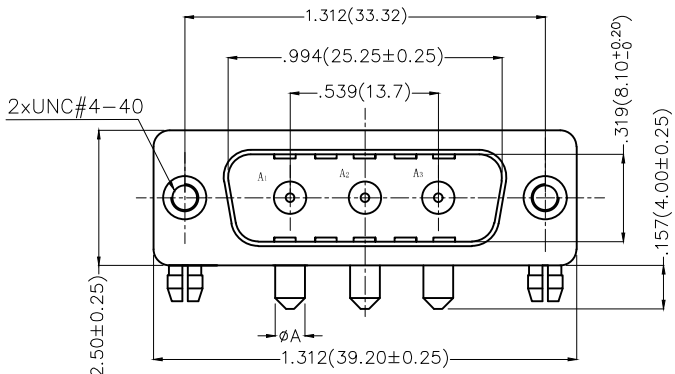
2. Materials And Finish
- 2.1 Shell: Steel Material, Front Nickel Plated 80u Min
Back Shell Tin Plated 100μ" Min
 - 2.2 Insulator: Glass Filled Thermoplastic, UL 94V-0 , Colour: Black
 - 2.3 Power Contacts: Brass/Gold Plated 3μ"~30μ"
 - 3. Temperature Range-Operating: -55°C ~ +105°C

Type	Part No.	øA	PCB. øB	Current Rating(A)
A	FDP0309-MODB1XXK6KA	.067(1.70)	.079(2.00)	10
B	FDP0309-MODB1XXK6KB	.108(2.75)	.118(3.00)	20
C	FDP0309-MODB1XXK6KC	.130(3.30)	.142(3.60)	30
D	FDP0309-MODB1XXK6KD	.150(3.80)	.161(4.10)	40

Ordering Information

FDP 03 09 — M0 D B 1 XX K6 K X
 1 2 3 4 5 6 7 8 9 10 11

1 Category FDP-Hight current D-SUB connector	2 Circuits 03-3W3	3 Distinction No. 09	4 Type MO-Male	5 Assembly Layout D-DIP
6 Entry Angle B-90° Angle	7 Plating 1-Gold Plated	8 Thickness of Plating 03-3μ" 15-15μ" Custom Plate Available	9 Color-Resin K6-Black	10 Packaging K-Tray
			11 Distinction Type A-Type A B-Type B C-Type C D-Type D	



Recommended P.C.Board Layout

 THIRD ANGLE PROJECTION	GENERAL TOLERANCES (UNLESS SPECIFIED)		APPROVE BY FRANK	DATE 19/JUL/13	PART NO. FDP0309-MODB1XK6KX	ITEM NO. FDP0309-M	 Leader Of Industry
	DESIGN UNITS Inch (metric)	X.±.012(0.30)	X'.±5'	CHECKED BY CHERRY	DATE 19/JUL/13	TITLE Hight current D-SUB connector 3W3 90° Angle Male	
SCALE 5:1	SIZE A4	X.XX±.008(0.20)	X'±2'	DRAWN BY JACOB	DATE 19/JUL/13	THIS DRAWING CONTAINS INFORMATION THAT IS PROPRIETARY TO TXGA INDUSTRIAL ELECTRONICS(S.Z)CO.,LTD AND SHOULD NOT BE USED WITHOUT WRITTEN PERMISSION	
		X.XX±.006(0.15)	.XX±1'				
		X.XXX±.004(0.10)	.XXX±0.5'				
						REV 0	SHEET NO. 1/1