

REV	LOCATIONS	DESCRIPTION	DATE	REVISER	APPD
1	△	Size change	17/MAY/22	MATT	CHERRY

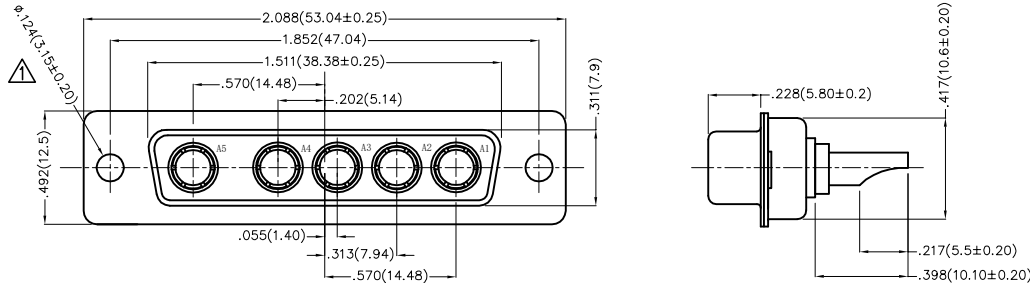
SPECIFICATIONS

Electrical Characteristic

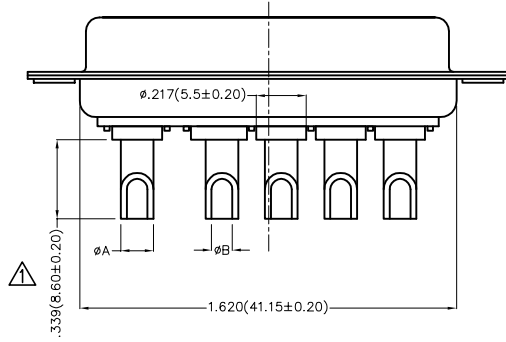
Current Rating: 10 to 40A (Power contacts)
Voltage Rating: 300V
Contact Resistance: 5mΩ Max.
Insulation Resistance: 5000 MΩ Min.
Dielectric Withstanding Voltage: 1000V AC r.m.s Min
Temperature Range-Operating: -55°C ~ +105°C

Material and plating

Shell: Steel, Nickel Plated 80μ" Min
Back Shell: Steel, Tin Plated 100μ" Min
Insulator: Glass Filled Thermoplastic (UL 94V-0)
Power Contacts: Brass/ Gold Plated




Type	Part NO.	A △	B △	Wire	Current Rating(A)
A	FDP0502-FOWS1XXK6XA	0.102(2.60)	.071(1.80)	14#~16#	10
B	FDP0502-FOWS1XXK6XB	0.142(3.60)	.110(2.80)	10#~12#	20
C	FDP0502-FOWS1XXK6XC	0.177(4.50)	.138(3.50)	8#~10#	30
D	FDP0502-FOWS1XXK6XD	0.213(5.40)	.181(4.60)	6#~8#	40



Ordering Information

FDP 05 02 — F0 W S 1 XX K6 X X
1 2 3 4 5 6 7 8 9 10 11

1 Category FDP-Hight current D-SUB connector	2 Circuits 05-5W5	3 Distinction No. 02	4 Type FO-Female	5 Assembly Layout W-Welding Type
6 Entry Angle S-180° Vertical	7 Plating 1-Gold Plated	8 Thickness of Plating 03-3μ" 15-15μ" Custom Plate Available	9 Color-Resin K6-Black	10 Packaging K-Tray L-Tube
				11 Distinction Type A-Type A B-Type B C-Type C D-Type D

THIRD ANGLE PROJECTION	GENERAL TOLERANCES (UNLESS SPECIFIED)		APPROVE BY FRANK	DATE 19/JUL/13	PART NO. FDP0502-FOWS1XXK6XX	ITEM NO. FDP0502-F	 Leader Of Industry
	X.±.012(0.30)	X:±5'	CHECKED BY CHERRY	DATE 19/JUL/13	TITLE Hight current D-SUB connector 5W5 180° Vertical Female		
DESIGN UNITS Inch (metric)	X.X±.008(0.20)	.X'±2'	DRAWN BY JACOB		DATE 19/JUL/13		REV 1 SHEET NO. 1/1
SCALE 5:1	SIZE A4	X.XX±.006(0.15)	X.XX±.004(0.10)		THIS DRAWING CONTAINS INFORMATION THAT IS PROPRIETARY TO TXGA INDUSTRIAL ELECTRONICS(S.Z)CO.,LTD AND SHOULD NOT BE USED WITHOUT WRITTEN PERMISSION		