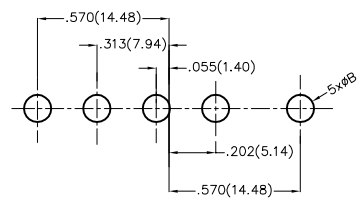
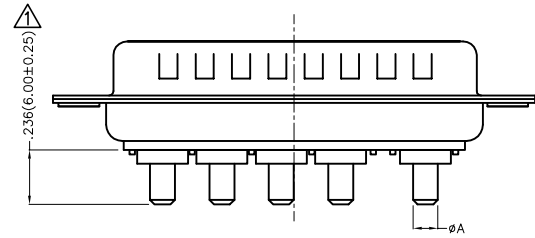
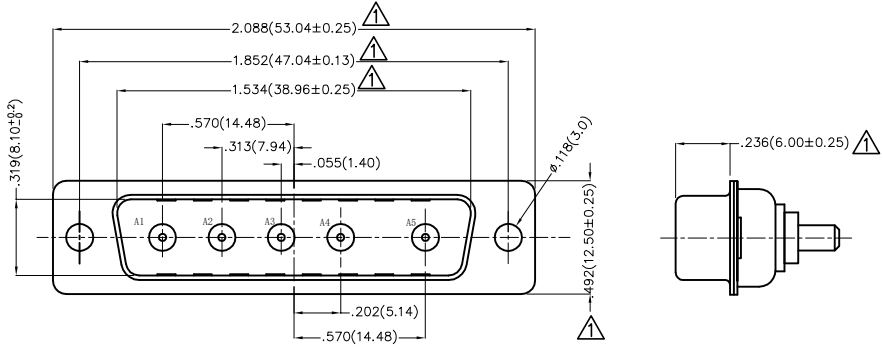
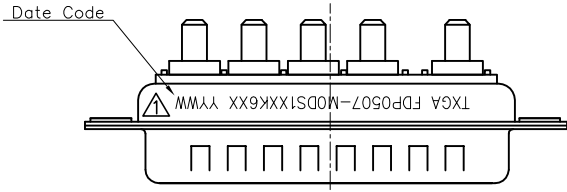


REV	LOCATIONS	DESCRIPTION	DATE	REVISER	APPD
1	△	1:Update tolerances 2:Add marking code	07/FEB/25	MATT	LEO



Recommended P.C.Board Layout

SPECIFICATIONS

Electrical Characteristic  
 Current Rating: 10 to 40A (Power contacts)  
 Voltage Rating: 300V  
 Contact Resistance: 5mΩ Max.  
 Insulation Resistance: 5000 MΩ Min.  
 Dielectric Withstanding Voltage: 1000V AC r.m.s Min  
 Temperature Range-Operating: -55°C ~ +105°C

Material and plating  
 Shell: Steel, Nickel Plated 80μ" Min  
 Back Shell: Steel, Tin Plated 100μ" Min  
 Insulator: Glass Filled Thermoplastic (UL 94V-0)  
 Power Contacts: Brass/ Gold Plated

Type	Part NO.	φA	PCB. φB	Current Rating(A)
A	FDP0507-MODS1XXK6XA	.067(1.70)	.079(2.00)	10
B	FDP0507-MODS1XXK6XB	.108(2.75)	.118(3.00)	20
C	FDP0507-MODS1XXK6XC	.130(3.30)	.142(3.60)	30
D	FDP0507-MODS1XXK6XD	.150(3.80)	.161(4.10)	40

Ordering Information

FDP 05 07 — M0 D S 1 XX K6 X X  
 1 2 3 4 5 6 7 8 9 10 11

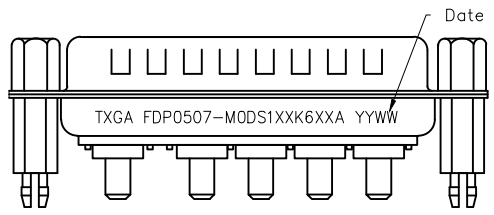
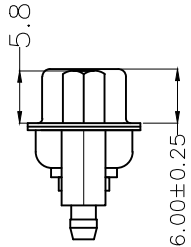
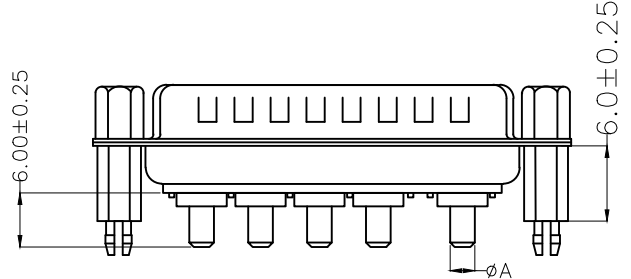
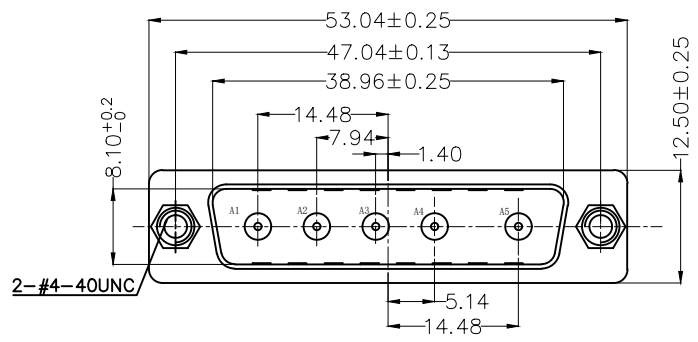
1	Category FDP-Hight current D-SUB connector	2	Circuits 05-5W5	3	Distinction No. 07	4	Type M0-Male	5	Assembly Layout D-DIP		
6	Entry Angle S-180° Vertical	7	Plating 1-Gold Plated	8	Thickness of Plating 03-3μ" 15-15μ" Custom Plate Available	9	Color-Resin K6-Black	10	Packaging K-Tray	11	Distinction Type A-Type A B-Type B C-Type C D-Type D

THIRD ANGLE PROJECTION	GENERAL TOLERANCES (UNLESS SPECIFIED)		APPROVE BY FRANK	DATE 19/JUL/13	PART NO. FDP0507-MODS1XXK6XX	ITEM NO. FDP0507-M	Building Technology Cornerstone
	DESIGN UNITS Inch (metric)	X.±.012(0.30) X.X±.008(0.20) X.XX±.006(0.15) X.XXX±.004(0.10)	X'±5' .X'±2' .XX'±1' .XXX'±0.5'	CHECKED BY CHERRY	DATE 19/JUL/13	TITLE Hight current D-SUB connector 5W5 180° Vertical Male	
SCALE 5:1	SIZE A4	DRAWN BY JACOB		DATE 19/JUL/13	THIS DRAWING CONTAINS INFORMATION THAT IS PROPRIETARY TO TXGA INDUSTRIAL ELECTRONICS(S.Z)CO.,LTD AND SHOULD NOT BE USED WITHOUT WRITTEN PERMISSION		

REV	LOCATIONS	DESCRIPTION	DATE	REVISER	APPD

**SPECIFICATIONS**  
**Electrical Characteristic**  
 Current Rating: 10 to 40A (Power contacts)  
 Voltage Rating: 300V  
 Contact Resistance: 5mΩ Max.  
 Insulation Resistance: 5000 MΩ Min.  
 Dielectric Withstanding Voltage: 1000V AC r.m.s Min  
 Temperature Range—Operating: -55°C ~ +105°C

**Material and plating**  
 Shell: Steel, Nickel Plated 80μ" Min  
 Back Shell: Steel, Tin Plated 100μ" Min  
 Insulator: PBT (UL 94V-0)  
 Power Contacts: Brass/ Gold Plated  
 Board Lock: Copper Alloy/ Tin Plated  
 Screw: Copper Alloy/ Nickel Plated  
 Salt spray :24H Min.

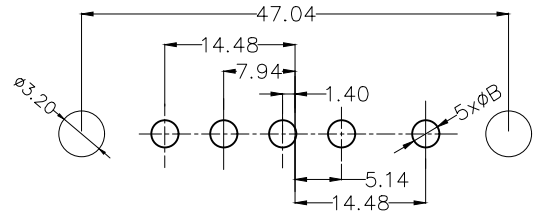


Type	Part NO.	φA	PCB. φB	Current Rating(A)
A	FDP0507-MODS1XXK6XAA	1.70	2.00	10
B	FDP0507-MODS1XXK6XBA	2.75	3.00	20
C	FDP0507-MODS1XXK6XCA	3.30	3.60	30
D	FDP0507-MODS1XXK6XDA	3.80	4.10	40

**Ordering Information**

FDP 05 07 — M0 D S 1 XX K6 X X A  
 1 2 3 4 5 6 7 8 9 10 11 12

1 D-sub Connector Category FDP—Power Type	2 Circuits 05—5W5	3 Distinction No. 07	4 Type M0—Male	5 Assembly Layout D—DIP	6 Entry Angle S—180° Vertical
7 Plating 1—Gold Plated	8 Thickness of Plating 03—3μ" 15—15μ" Custom Plate Available	9 Color—Resin K6—Black	10 Packaging K—Tray	11 Pin Type A—Type A B—Type B C—Type C D—Type D	12 Product Type A—Type A



**Recommended P.C.Board Layout**  
 General tolerances ±0.05mm

THIRD ANGLE PROJECTION	GENERAL TOLERANCES (UNLESS SPECIFIED)		APPROVE BY LEO	DATE 02/AUG/24	PART NO. FDP0507-MODS1XXK6XXA	ITEM NO. FDP0507-M	
	DESIGN UNITS METRIC	X. ±0.30 X.X ±0.20 X.XX ±0.15 X.XXX ±0.10	X.' ±5" X.X' ±2" X.XX' ±1" X.XXX' ±0.5"	CHECKED BY GISELLE	DATE 02/AUG/24	TITLE High current D-SUB connector 5W5 180° Vertical Male	
SCALE 5:1	SIZE A4	DRAWN BY NICK		DATE 02/AUG/24	THIS DRAWING CONTAINS INFORMATION THAT IS PROPRIETARY TO TXGA INDUSTRIAL ELECTRONICS(S,Z)CO.,LTD AND SHOULD NOT BE USED WITHOUT WRITTEN PERMISSION		