

REV	LOCATIONS	DESCRIPTION	DATE	REVISER	APPD
1		Add Type D view	09/OCT/25	MATT	PYD
2		Add marking code	09/OCT/25	MATT	PYD

SPECIFICATIONS

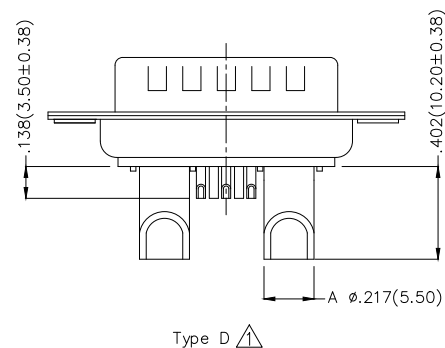
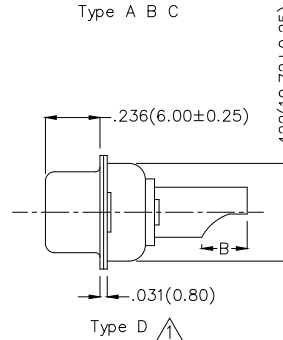
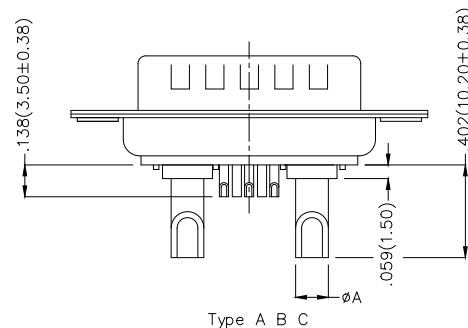
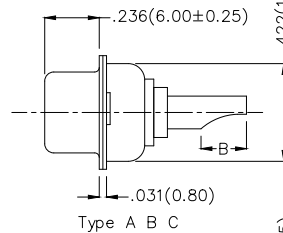
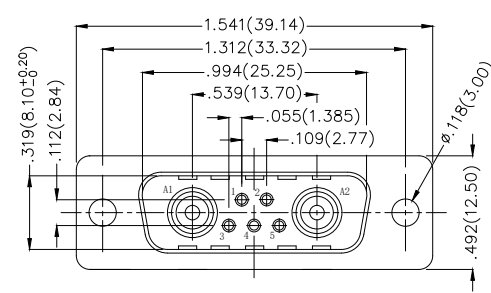
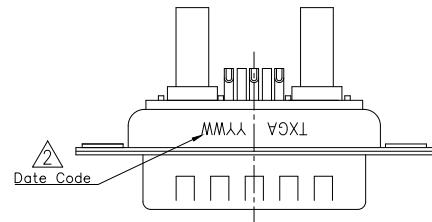
Electrical Characteristic

Current Rating:
 Signal contacts: 5A
 Power contacts: 10 to 40A
 Voltage Rating: 300V
 Contact Resistance: 5mΩ Max.
 Insulation Resistance: 5000 MΩ Min.
 Dielectric Withstanding Voltage: 1000V AC r.m.s Min
 Temperature Range—Operating: -55°C ~ +105°C

Material and plating

Shell: Steel, Nickel Plated 80μ" Min
 Back Shell: Steel, Tin Plated 100μ" Min
 Insulator: Glass Filled Thermoplastic (UL 94V-0)
 Signal contacts: Brass/ Gold Plated
 Power Contacts: Brass/ Gold Plated

Type	Part NO.	A	B	Wire	Current Rating(A)
A	FDP0701-MOWS1XXK6KA	∅.098(2.50)	.177(4.50)	14#~16#	10
B	FDP0701-MOWS1XXK6KB	∅.142(3.60)	.197(5.00)	10#~12#	20
C	FDP0701-MOWS1XXK6KC	∅.173(4.40)	.217(5.50)	8#~10#	30
D	FDP0701-MOWS1XXK6KD	∅.217(5.50)	.217(5.50)	6#~8#	40



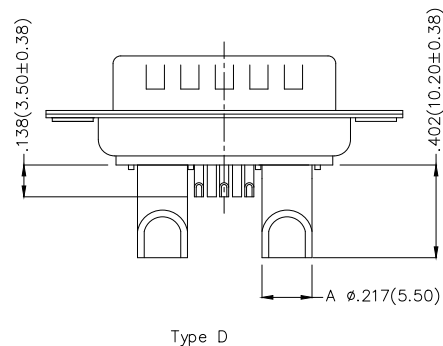
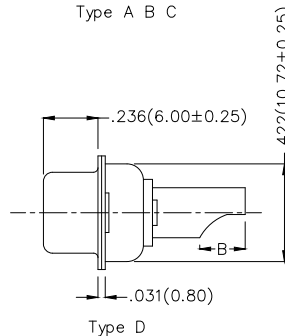
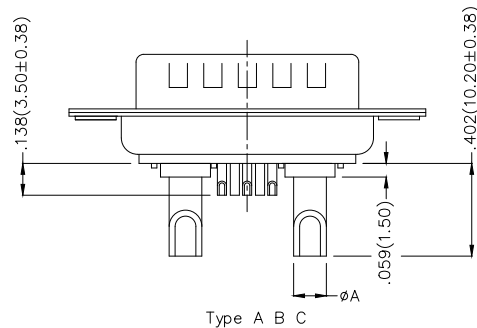
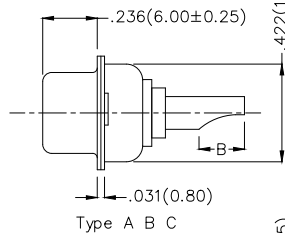
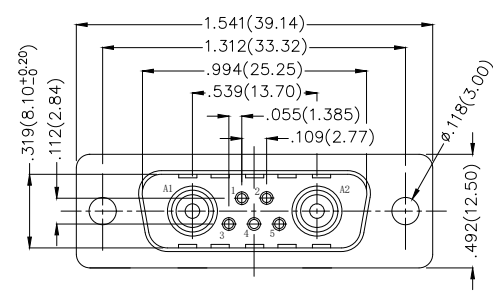
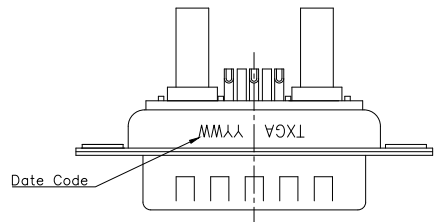
Ordering Information

FDP 07 01 — M0 W S 1 XX K6 K X
 1 2 3 4 5 6 7 8 9 10 11

1	Category FDP—High current D—SUB connector	2	Circuits 07—7W2	3	Distinction No. 01	4	Type M0—Male	5	Assembly Layout W—Welding Type		
6	Entry Angle S—180° Vertical	7	Plating 1—Gold Plated	8	Thickness of Plating 03—3μ" 15—15μ" Custom Plate Available	9	Color—Resin K6—Black	10	Packaging K—Tray	11	Distinction Type A—Type A B—Type B C—Type C D—Type D

 THIRD ANGLE PROJECTION	GENERAL TOLERANCES (UNLESS SPECIFIED)		APPROVE BY FRANK	DATE 19/JUL/13	PART NO. FDP0701-MOWS1XXK6KX	ITEM NO. FDP0701-M	 Leader Of Industry	
	X.±.012(0.30)	X.±5°	CHECKED BY CHERRY	DATE 19/JUL/13	TITLE High current D—SUB connector 7W2 180° Vertical Male			REV 0
DESIGN UNITS Inch (metric)	X.X±.008(0.20)	.X±2°	DRAWN BY JACOB	DATE 19/JUL/13	THIS DRAWING CONTAINS INFORMATION THAT IS PROPRIETARY TO TXGA INDUSTRIAL ELECTRONICS(S.Z)CO.,LTD AND SHOULD NOT BE USED WITHOUT WRITTEN PERMISSION			
SCALE 5:1	SIZE A4	X.XX±.006(0.15)						
		X.XXX±.004(0.10)						

REV	LOCATIONS	DESCRIPTION	DATE	REVISER	APPD



SPECIFICATIONS

Electrical Characteristic

Current Rating:
 Signal contacts: 5A
 Power contacts: 10 to 40A
 Voltage Rating: 300V
 Contact Resistance: 5mΩ Max.
 Insulation Resistance: 5000 MΩ Min.
 Dielectric Withstanding Voltage: 1000V AC r.m.s Min
 Temperature Range—Operating: -55°C ~ +105°C

Material and plating

Shell: Stainless Steel, Nickel Plated 80µ" Min
 Insulator: Glass Filled Thermoplastic (UL 94V-0)
 Signal contacts: Brass/ Gold Plated
 Power Contacts: Brass/ Gold Plated

Type	Part NO.	A	B	Wire	Current Rating(A)
A	FDP0701-MOWS1XXGNKA	ø.098(2.50)	.177(4.50)	14#~16#	10
B	FDP0701-MOWS1XXGNKB	ø.142(3.60)	.197(5.00)	10#~12#	20
C	FDP0701-MOWS1XXGNKC	ø.173(4.40)	.217(5.50)	8#~10#	30
D	FDP0701-MOWS1XXGNKD	ø.217(5.50)	.217(5.50)	6#~8#	40

Ordering Information

FDP 07 01 — M0 W S 1 XX GN K X
 1 2 3 4 5 6 7 8 9 10 11

1 Category FDP—High current D—SUB connector	2 Circuits 07—7W2	3 Distinction No. 01	4 Type M0—Male	5 Assembly Layout W—Welding Type
6 Entry Angle S—180° Vertical	7 Plating 1—Gold Plated	8 Thickness of Plating 03—3µ" 15—15µ" Custom Plate Available	9 Color—Resin GN—Green	10 Packaging K—Tray
				11 Distinction Type A—Type A B—Type B C—Type C D—Type D

 THIRD ANGLE PROJECTION DESIGN UNITS Inch (metric) SCALE 5:1	GENERAL TOLERANCES (UNLESS SPECIFIED) X.±.012(0.30) X.±5° X.X±.008(0.20) .X'±2' X.XX±.006(0.15) .XX'±1' X.XXX±.004(0.10) .XXX'±0.5'		APPROVE BY FRANK CHECKED BY CHERRY DRAWN BY PYD	DATE 09/OCT/25 DATE 09/OCT/25 DATE 09/OCT/25	PART NO. FDP0701-MOWS1XXGNKX TITLE High current D—SUB connector 7W2 180° Vertical Male	ITEM NO. FDP0701-M	 Leader Of Industry REV 0 SHEET NO. 1/1 THIS DRAWING CONTAINS INFORMATION THAT IS PROPRIETARY TO TXGA INDUSTRIAL ELECTRONICS(S.Z)CO.,LTD AND SHOULD NOT BE USED WITHOUT WRITTEN PERMISSION