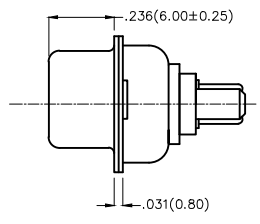
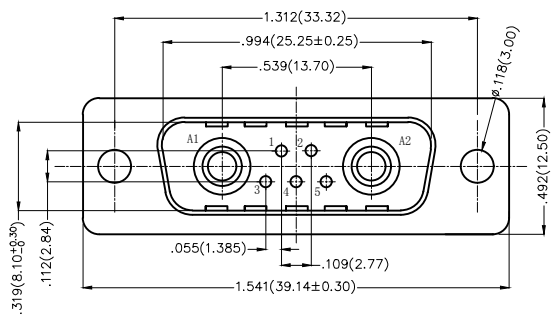


REV	LOCATIONS	DESCRIPTION	DATE	REVISER	APPD

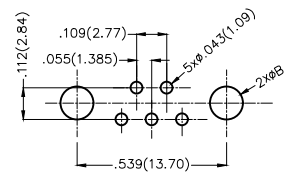
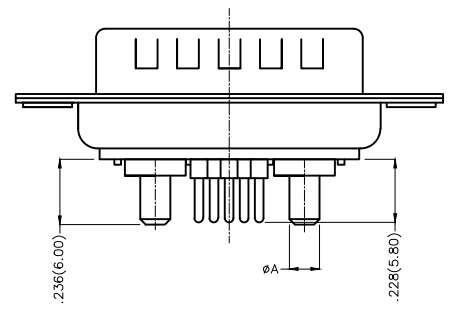
SPECIFICATIONS

Electrical Characteristic
 Current Rating:
 Signal contacts: 7.5A
 Power contacts: 10 to 40A
 Voltage Rating: 300V
 Contact Resistance: 5mΩ Max.
 Insulation Resistance: 5000 MΩ Min.
 Dielectric Withstanding Voltage: 1000V AC r.m.s Min
 Temperature Range-Operating: -55°C ~ +105°C

Material and plating
 Shell: Steel, Nickel Plated 80μ" Min
 Back Shell: Steel, Tin Plated 100μ" Min
 Insulator: Glass Filled Thermoplastic (UL 94V-0)
 Signal contacts: Brass/ Gold Plated
 Power Contacts: Brass/ Gold Plated



Type	Part NO.	øA	PCB. øB	Current Rating(A)
A	FDP0706-MODS1XXK6KA	.067(1.70)	.079(2.00)	10
B	FDP0706-MODS1XXK6KB	.108(2.75)	.118(3.00)	20
C	FDP0706-MODS1XXK6KC	.130(3.30)	.142(3.60)	30
D	FDP0706-MODS1XXK6KD	.150(3.80)	.161(4.10)	40




Recommended P.C.Board Layout

Ordering Information

FDP 07 06 — M0 D S 1 XX K6 K X
 1 2 3 4 5 6 7 8 9 10 11

1 Category FDP-Hight current D-SUB connector	2 Circuits 07-7W2	3 Distinction No. 06	4 Type MO-Male	5 Assembly Layout D-DIP
6 Entry Angle S-180° Vertical	7 Plating 1-Gold Plated	8 Thickness of Plating 03-3μ" 15-15μ" Custom Plate Available	9 Color-Resin K6-Black	10 Packaging K-Tray
			11 Distinction Type A-Type A B-Type B C-Type C D-Type D	

THIRD ANGLE PROJECTION	GENERAL TOLERANCES (UNLESS SPECIFIED)		APPROVE BY FRANK	DATE 19/JUL/13	PART NO. FDP0706-MODS1XXK6KX	ITEM NO. FDP0706-M	 Leader Of Industry
	DESIGN UNITS Inch (metric)	X.±.012(0.30) X.X±.008(0.20) X.XX±.006(0.15) X.XXX±.004(0.10)	X.±5° .X'±2° .XX'±1° .XXX'±0.5°	CHECKED BY CHERRY	DATE 19/JUL/13	TITLE Hight current D-SUB connector 7W2 180° Vertical Male	
SCALE 5:1	SIZE A4	DRAWN BY JACOB		DATE 19/JUL/13	THIS DRAWING CONTAINS INFORMATION THAT IS PROPRIETARY TO TXGA INDUSTRIAL ELECTRONICS(S.Z)CO.,LTD AND SHOULD NOT BE USED WITHOUT WRITTEN PERMISSION		