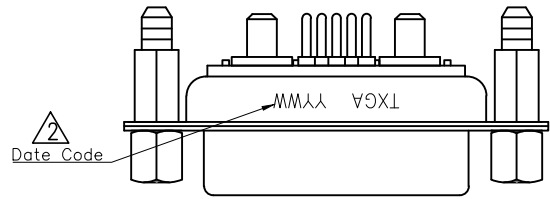


REV	LOCATIONS	DESCRIPTION	DATE	REVISER	APPD
1	△	Update dimensions	12/NOV/24	MATT	LEO
2	△	Add marking code	10/Sept/25	NICK	LEO



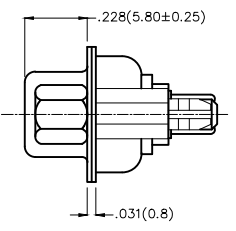
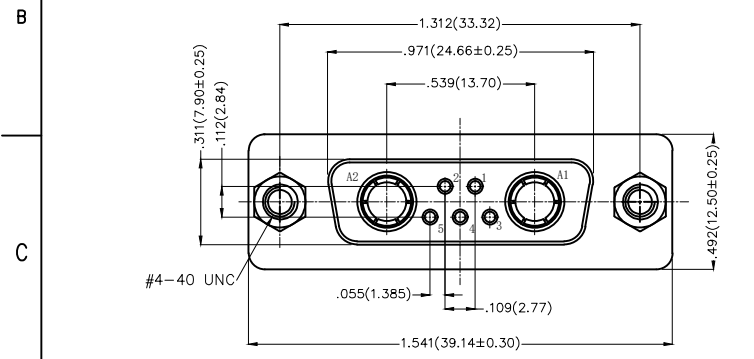
SPECIFICATIONS

Electrical Characteristic

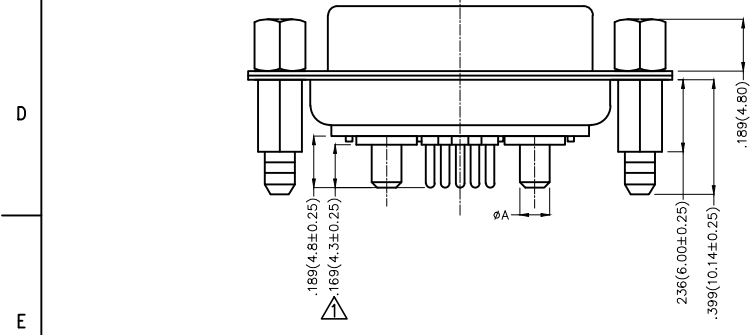
- Current Rating:
  - Signal contacts: 7.5A
  - Power contacts: 10 to 40A
- Voltage Rating: 300V
- Contact Resistance: 5mΩ Max.
- Insulation Resistance: 5000 MΩ Min.
- Dielectric Withstanding Voltage: 1000V AC r.m.s Min
- Temperature Range-Operating: -55°C ~ +105°C

Material and plating

- Shell: Steel, Nickel Plated 80μ" Min
- Back Shell: Steel, Tin Plated 100μ" Min
- Insulator: Glass Filled Thermoplastic (UL 94V-0)
- Signal contacts: Brass/ Gold Plated
- Power contacts: Brass/ Gold Plated



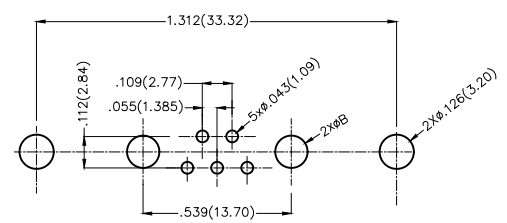
Type	Part NO.	øA	PCB. øB	Current Rating(A)
A	FDP0708-F0DS1XXK6KA	.067(1.70)	.079(2.00)	10
B	FDP0708-F0DS1XXK6KB	.108(2.75)	.118(3.00)	20
C	FDP0708-F0DS1XXK6KC	.130(3.30)	.142(3.60)	30
D	FDP0708-F0DS1XXK6KD	.150(3.80)	.161(4.10)	40



Ordering Information

FDP 07 08 - F0 D S 1 XX K6 K X  
 1 2 3 4 5 6 7 8 9 10 11

1	Category FDP-Hight current D-SUB connector	2	Circuits 07-7W2	3	Distinction No. 08	4	Type F0-Female	5	Assembly Layout D-DIP		
6	Entry Angle S-180° Vertical	7	Plating 1-Gold Plated	8	Thickness of Plating 03-3μ" 15-15μ" Custom Plate Available	9	Color-Resin K6-Black	10	Packaging K-Tray	11	Distinction Type A-Type A B-Type B C-Type C D-Type D



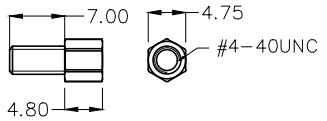
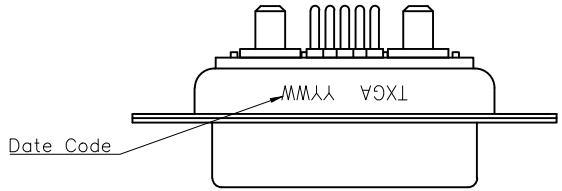
Recommended P.C.Board Layout

 THIRD ANGLE PROJECTION	GENERAL TOLERANCES (UNLESS SPECIFIED)		APPROVE BY FRANK	DATE 19/JUL/13	PART NO. FDP0708-F0DS1XXK6KX	ITEM NO. FDP0708-F	 Building Technology Cornerstone
	DESIGN UNITS Inch (metric)	X.±.012(0.30) X.X±.008(0.20)	X.±5° .X±2°	CHECKED BY CHERRY	DATE 19/JUL/13	TITLE Hight current D-SUB connector 7W2 180° Vertical Female	
SCALE 5:1	SIZE A4	X.XX±.006(0.15) X.XXX±.004(0.10)	.XX±1° .XXX±0.5°	DRAWN BY JACOB	DATE 19/JUL/13	THIS DRAWING CONTAINS INFORMATION THAT IS PROPRIETARY TO TXGA INDUSTRIAL ELECTRONICS(S.Z)CO.,LTD AND SHOULD NOT BE USED WITHOUT WRITTEN PERMISSION	

REV 2 SHEET NO. 1/1

1 2 3 4 5 6 7 8

REV	LOCATIONS	DESCRIPTION	DATE	REVISER	APPD

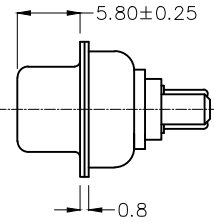
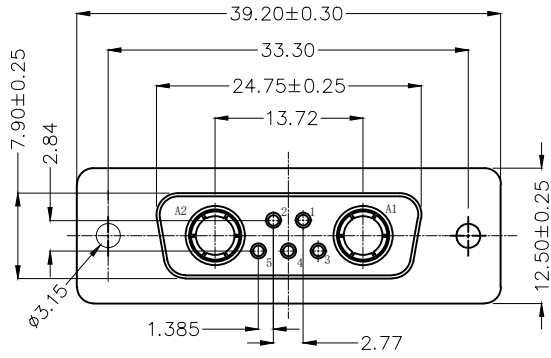


Screw (2pcs)

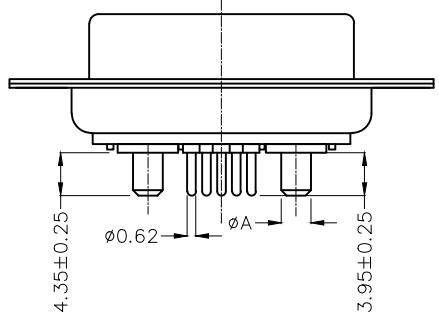
**SPECIFICATIONS**

**Electrical Characteristic**  
 Current Rating:  
     Signal contacts: 7.5A  
     Power contacts: 10 to 40A  
 Voltage Rating: 300V  
 Contact Resistance: 5mΩ Max.  
 Insulation Resistance: 5000 MΩ Min.  
 Dielectric Withstanding Voltage: 1000V AC r.m.s Min  
 Temperature Range-Operating: -55°C ~ +105°C

**Material and plating**  
 Shell: Steel, Nickel Plated 80μ" Min  
 Back Shell: Steel, Tin Plated 100μ" Min  
 Insulator: Glass Filled Thermoplastic (UL 94V-0)  
 Signal contacts: Brass/ Gold Plated  
 Power contacts: Brass/ Gold Plated  
 Screw: Copper alloy/Nickel Plated



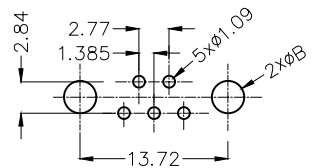
Type	Part NO.	øA	PCB. øB	Current Rating(A)
A	FDP0708-FODS1XXK6KAA	1.80	2.00	10
B	FDP0708-FODS1XXK6KBA	2.80	3.00	20
C	FDP0708-FODS1XXK6KCA	3.30	3.50	30
D	FDP0708-FODS1XXK6KDA	3.80	4.00	40



**Ordering Information**

FDP 07 08 — F0 D S 1 XX K6 K X A  
 1 2 3 4 5 6 7 8 9 10 11 12

1   Category FDP-Hight current D-SUB connector	2   Circuits 07-7W2	3   Distinction No. 08	4   Type F0-Female	5   Assembly Layout D-DIP	6   Entry Angle S-180° Vertical
7   Plating 1-Gold Plated	8   Thickness of Plating 03-3μ" 15-15μ" Custom Plate Available	9   Color-Resin K6-Black	10   Packaging K-Tray	11   Distinction Type A-Type A B-Type B C-Type C D-Type D	12   Product Type A-With screw



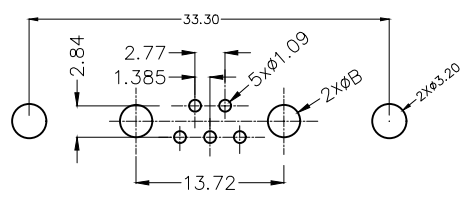
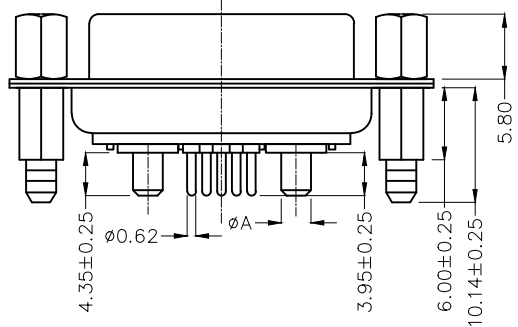
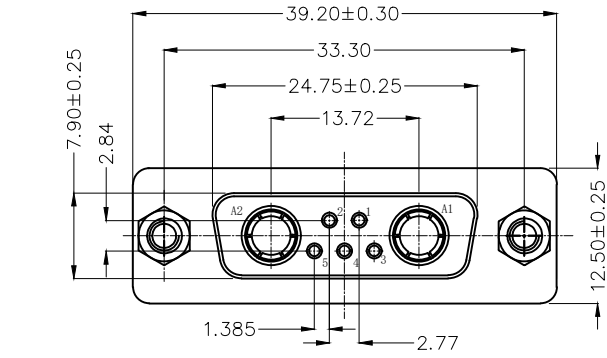
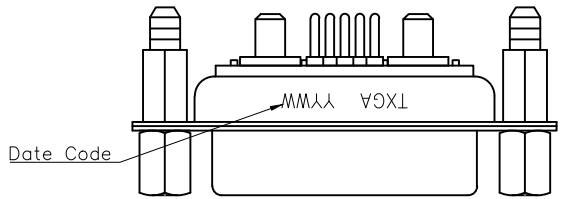
Recommended P.C.Board Layout

 THIRD ANGLE PROJECTION	GENERAL TOLERANCES (UNLESS SPECIFIED)		APPROVE BY LEO	DATE 15/AUG/24	PART NO. FDP0708-FODS1XXK6KXA	ITEM NO. FDP0708-F	 Building Technology Cornerstone
	X. ±0.30 X.X ±0.20 X.XX ±0.15 X.XXX ±0.10	X.* ±5° X.X* ±2° X.XX* ±1° X.XXX* ±0.5°	CHECKED BY GISELLE	DATE 15/AUG/24	TITLE Hight current D-SUB connector 7W2 180° Vertical Female	REV 0	
SCALE 5:1	SIZE A4	DRAWN BY NICK	DATE 15/AUG/24	THIS DRAWING CONTAINS INFORMATION THAT IS PROPRIETARY TO TXGA INDUSTRIAL ELECTRONICS(S.Z)CO.,LTD AND SHOULD NOT BE USED WITHOUT WRITTEN PERMISSION			

1 2 3 4 5 6 7 8

1 2 3 4 5 6 7 8

REV	LOCATIONS	DESCRIPTION	DATE	REVISER	APPD



Recommended P.C.Board Layout

SPECIFICATIONS

Electrical Characteristic  
 Current Rating:  
 Signal contacts: 7.5A  
 Power contacts: 10 to 40A  
 Voltage Rating: 300V  
 Contact Resistance: 5mΩ Max.  
 Insulation Resistance: 5000 MΩ Min.  
 Dielectric Withstanding Voltage: 1000V AC r.m.s Min  
 Temperature Range—Operating: -55°C ~ +105°C

Material and plating  
 Shell: Steel, Nickel Plated 80μ" Min  
 Back Shell: Steel, Tin Plated 100μ" Min  
 Insulator: Glass Filled Thermoplastic (UL 94V-0)  
 Signal contacts: Brass/ Gold Plated  
 Power contacts: Brass/ Gold Plated  
 Board Lock: Copper Alloy/ Tin Plated  
 Screw: Copper alloy/Nickel Plated

Type	Part NO.	ØA	PCB. ØB	Current Rating(A)
A	FDP0708-FODS1XXK6KAB	1.80	2.00	10
B	FDP0708-FODS1XXK6KBB	2.80	3.00	20
C	FDP0708-FODS1XXK6KCB	3.30	3.50	30
D	FDP0708-FODS1XXK6KDB	3.80	4.00	40

Ordering Information

FDP 07 08 — F0 D S 1 XX K6 K X B  
 1 2 3 4 5 6 7 8 9 10 11 12

1 Category FDP—High current D—SUB connector	2 Circuits 07—7W2	3 Distinction No. 08	4 Type F0—Female	5 Assembly Layout D—DIP	6 Entry Angle S—180° Vertical
7 Plating 1—Gold Plated	8 Thickness of Plating 03—3μ" 15—15μ" Custom Plate Available	9 Color—Resin K6—Black	10 Packaging K—Tray	11 Distinction Type A—Type A B—Type B C—Type C D—Type D	12 Type B—Type B

THIRD ANGLE PROJECTION	GENERAL TOLERANCES (UNLESS SPECIFIED)		APPROVE BY LEO	DATE 15/AUG/25	PART NO. FDP0708-FODS1XXK6KXB	ITEM NO. FDP0708-F	 Building Technology Cornerstone
	X. ±0.30	X.* ±5°	CHECKED BY GISELLE	DATE 15/AUG/25	TITLE High current D-SUB connector 7W2 180° Vertical Female		
DESIGN UNITS METRIC	X.X ±0.20	X.X* ±2°	DRAWN BY NICK	DATE 15/AUG/25	THIS DRAWING CONTAINS INFORMATION THAT IS PROPRIETARY TO TXGA INDUSTRIAL ELECTRONICS(S.Z)CO.,LTD AND SHOULD NOT BE USED WITHOUT WRITTEN PERMISSION		
SCALE 5:1	SIZE A4	X.XX ±0.15	X.XX* ±1°				
		X.XXX ±0.10	X.XXX* ±0.5°				

1 2 3 4 5 6 7 8