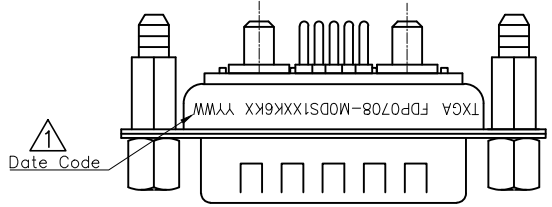


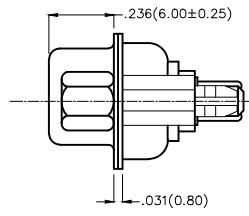
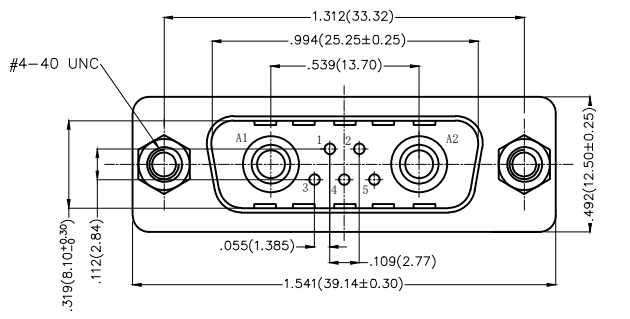
REV	LOCATIONS	DESCRIPTION	DATE	REVISER	APPD
1	△	Add marking code	13/Jan/25	NICK	LEO



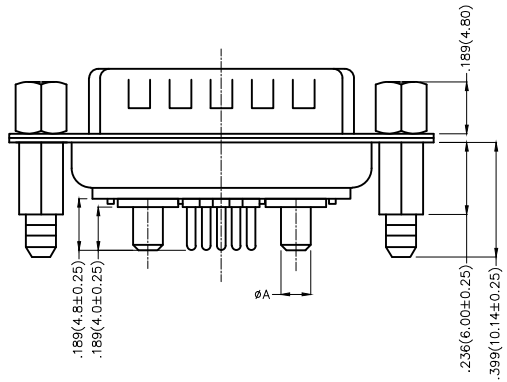
**SPECIFICATIONS**

**Electrical Characteristic**  
**Current Rating:**  
 Signal contacts: 7.5A  
 Power contacts: 10 to 40A  
**Voltage Rating:** 300V  
**Contact Resistance:** 5mΩ Max.  
**Insulation Resistance:** 5000 MΩ Min.  
**Dielectric Withstanding Voltage:** 1000V AC r.m.s Min  
**Temperature Range-Operating:** -55°C ~ +105°C

**Material and plating**  
 Shell: Steel, Nickel Plated 80μ" Min  
 Back Shell: Steel, Tin Plated 100μ" Min  
 Insulator: Glass Filled Thermoplastic (UL 94V-0)  
 Signal contacts: Brass/ Gold Plated  
 Power Contacts: Brass/ Gold Plated



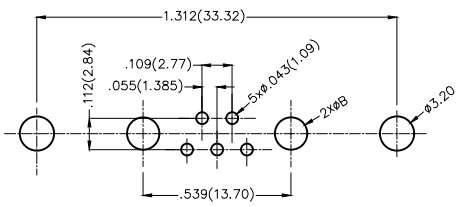
Type	Part NO.	øA	PCB. øB	Current Rating(A)
A	FDP0708-MODS1XXK6KA	.067(1.70)	.079(2.00)	10
B	FDP0708-MODS1XXK6KB	.108(2.75)	.118(3.00)	20
C	FDP0708-MODS1XXK6KC	.130(3.30)	.142(3.60)	30
D	FDP0708-MODS1XXK6KD	.150(3.80)	.161(4.10)	40



**Ordering Information**

FDP 07 08 — M0 D S 1 XX K6 K X  
 1 2 3 4 5 6 7 8 9 10 11

1	Category FDP-Hight current D-SUB connector	2	Circuits 07-7W2	3	Distinction No. 08	4	Type M0-Male	5	Assembly Layout D-DIP		
6	Entry Angle S-180° Vertical	7	Plating 1-Gold Plated	8	Thickness of Plating 03-3μ" 15-15μ" Custom Plate Available	9	Color-Resin K6-Black	10	Packaging K-Tray	11	Distinction Type A-Type A B-Type B C-Type C D-Type D



**Recommended P.C.Board Layout**

<p>THIRD ANGLE PROJECTION</p>	GENERAL TOLERANCES (UNLESS SPECIFIED) X.±.012(0.30) X.±5' X.X±.008(0.20) .X'±2' X.XX±.006(0.15) .XX'±1" X.XXX±.004(0.10) .XXX'±0.5"		APPROVE BY FRANK CHECKED BY CHERRY DRAWN BY JACOB	DATE 19/JUL/13 DATE 19/JUL/13 DATE 19/JUL/13	PART NO. FDP0708-MODS1XXK6KX TITLE Hight current D-SUB connector 7W2 180° Vertical Male	ITEM NO. FDP0708-M	<p>Leader Of Industry</p>	REV 1	SHEET NO. 1/1
	DESIGN UNITS Inch (metric) SCALE 5:1	SIZE A4	THIS DRAWING CONTAINS INFORMATION THAT IS PROPRIETARY TO TXGA INDUSTRIAL ELECTRONICS(S.Z)CO.,LTD AND SHOULD NOT BE USED WITHOUT WRITTEN PERMISSION						