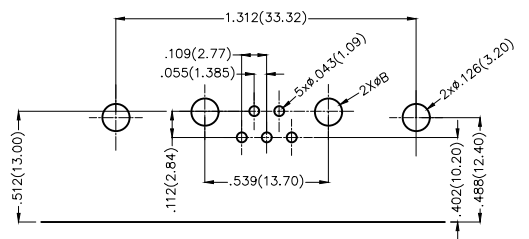
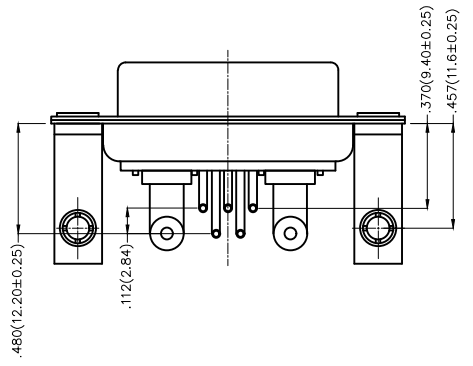
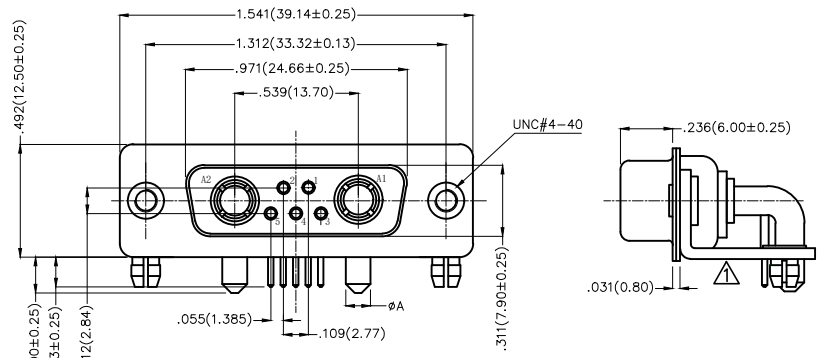
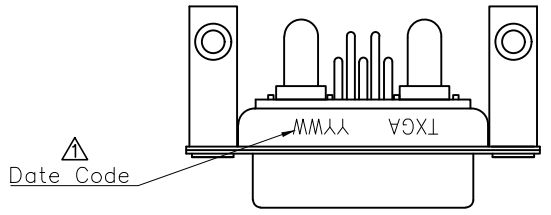


REV	LOCATIONS	DESCRIPTION	DATE	REVISER	APPD
1	△	Change the structure/ Add marking code	13/Jan/25	NICK	LEO



Recommended P.C.Board Layout

- 1.Electrical Characteristic
 - 1.1Current Rating
Signal Contacts:7.5A
Power Contacts:10 to 40A
 - 1.2Voltage Rating:300V
 - 1.3Contact Resistance:5Milliohms Max
 - 1.4Insulation Resistance:5000 Megaohms Min.
 - 1.5Dielectric Withstanding Voltage :1000V AC r.m.s Min

- 2.Materials And Finish
 - 2.1Shell:Steel Material,Front Nickel Plated 80u" Min
Back Shell Tin Plated 100u" Min
 - 2.2Insulator:Glass Filled Thermoplastic, UL 94V-0 ,Colour:Black
 - 2.3Signal Contacts:Brass /Gold Plated 1u~30u "
 - 2.4Power Contacts:Brass /Gold Plated 3u~30u "
- 3.Temperature Range-Operating: -55°C ~ +105°C

Type	Part No.	øA	PCB. øB	Current Rating(A)
A	FDP0711-F0DB1XXK6KA	.067(1.70)	.079(2.00)	10
B	FDP0711-F0DB1XXK6KB	.108(2.75)	.118(3.00)	20
C	FDP0711-F0DB1XXK6KC	.130(3.30)	.142(3.60)	30
D	FDP0711-F0DB1XXK6KD	.150(3.80)	.161(4.10)	40

Ordering Information

FDP 07 11 — F0 D B 1 XX K6 K X
1 2 3 4 5 6 7 8 9 10 11

1 D-sub Connector Category FDP-Power Type	2 Circuits 07-7W2	3 Distinction No. 11	4 Type F0-Female	5 Assembly Layout D-DIP	6 Entry Angle B-90° Angle
7 Plating 1-Gold Plated	8 Thickness of Plating 03-3u" 15-15u" 30-30u"	9 Color-Resin K6-Black	10 Packaging K-Tray	11 Type A-Type A C-Type C B-Type B D-Type D	

 THIRD ANGLE PROJECTION	GENERAL TOLERANCES (UNLESS SPECIFIED)		APPROVE BY FRANK	DATE 19/JUL/13	PART NO. FDP0711-F0DB1XXK6KX	ITEM NO. FDP0711-F	 Leader Of Industry
	DESIGN UNITS Inch (metric)	X.±.012(0.30) X.X±.008(0.20)	X'.±5" .X'±2'	CHECKED BY CHERRY	DATE 19/JUL/13	TITLE POWER MACHINED CONTACT HYBRID D-SUB FEMALE 7W2 CONN	
SCALE 5:1	SIZE A4	X.XX±.006(0.15) X.XXX±.004(0.10)	.XX'±1" .XXX'±0.5"	DRAWN BY JACOB	DATE 19/JUL/13	THIS DRAWING CONTAINS INFORMATION THAT IS PROPRIETARY TO TXGA INDUSTRIAL ELECTRONICS(S.Z)CO.,LTD AND SHOULD NOT BE USED WITHOUT WRITTEN PERMISSION	

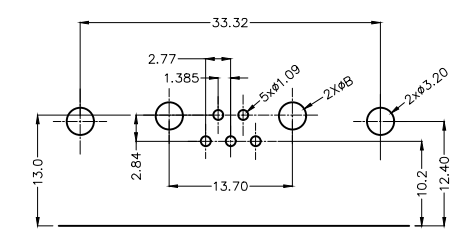
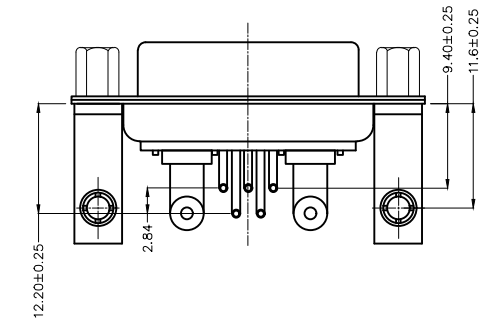
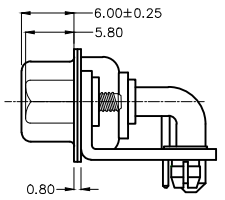
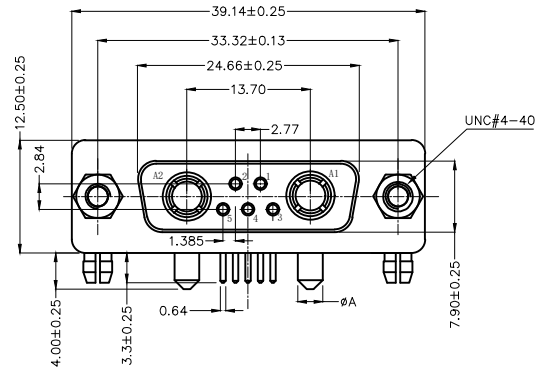
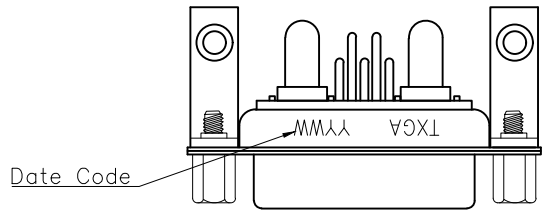
1 2 3 4 5 6 7 8

REV	LOCATIONS	DESCRIPTION	DATE	REVISER	APPD

SPECIFICATIONS

Electrical Characteristic
 Current Rating:
 Signal contacts: 7.5A
 Power contacts: 10 to 40A
 Voltage Rating: 300V
 Contact Resistance: 5mΩ Max.
 Insulation Resistance: 5000 MΩ Min.
 Dielectric Withstanding Voltage: 1000V AC r.m.s Min.
 Temperature Range—Operating: -55°C ~ +105°C

Material and plating
 Shell: Steel, Nickel Plated 80μ" Min
 Back Shell: Steel, Tin Plated 100μ" Min
 Insulator: PBT (UL 94V-0)
 Signal contacts: Brass/ Gold Plated 1u~30u
 Power Contacts: Brass/ Gold Plated 3u~30u
 Board Lock: Copper Alloy/ Tin Plated
 Screws: Carbon steel/Nickel Plated
 Salt spray : 24H Min.



Recommended P.C.Board Layout

Type	Part NO.	A	B	Current Rating(A)
A	FDP0711-F0DB1XXK6KAA	φ1.70	2.00	10
B	FDP0711-F0DB1XXK6KBA	φ2.75	3.00	20
C	FDP0711-F0DB1XXK6KCA	φ3.30	3.60	30
D	FDP0711-F0DB1XXK6KDA	φ3.80	4.10	40

Ordering Information

FDP 07 11 — F0 D B 1 XX K6 K X A
 1 2 3 4 5 6 7 8 9 10 11 12

1 D-sub Connector Category FDP—Power Type	2 Circuits 07—7W2	3 Distinction No. 11	4 Type FO—Female	5 Assembly Layout D—DIP	6 Entry Angle B—90° Angle
7 Plating 1—Gold Plated	8 Thickness of Plating 03—3u"15—15u" 30—30u".....	9 Color—Resin K6—Black	10 Packaging K—Tray	11 Type A—Type A C—Type C B—Type B D—Type D	12 Product Type A—Screws Type

<p>THIRD ANGLE PROJECTION</p>	GENERAL TOLERANCES (UNLESS SPECIFIED) X. ±0.30 X.* ±5' X.X ±0.20 X.X* ±2'		APPROVE BY LEO	DATE 15/AUG/23	PART NO. FDP0711-F0DB1XXK6KXA	ITEM NO. FDP0711-F	<p>Building Technology Cornerstone</p>
	DESIGN UNITS METRIC SCALE 5:1 SIZE A4	X.XX ±0.15 X.XX* ±1' X.XXX ±0.10 X.XXX* ±0.5'		CHECKED BY GISELLE	DATE 15/AUG/23	TITLE Hight current D-SUB connector 7W2 90° Angle Female	
THIS DRAWING CONTAINS INFORMATION THAT IS PROPRIETARY TO TXGA INDUSTRIAL ELECTRONICS(S,Z)CO.,LTD AND SHOULD NOT BE USED WITHOUT WRITTEN PERMISSION							

1 2 3 4 5 6 7 8