

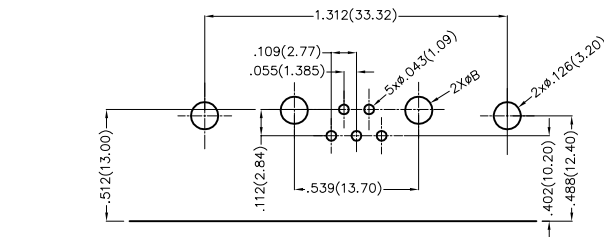
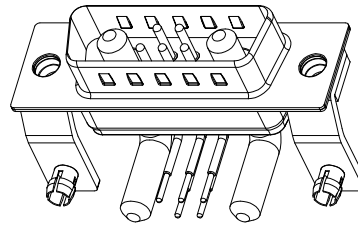
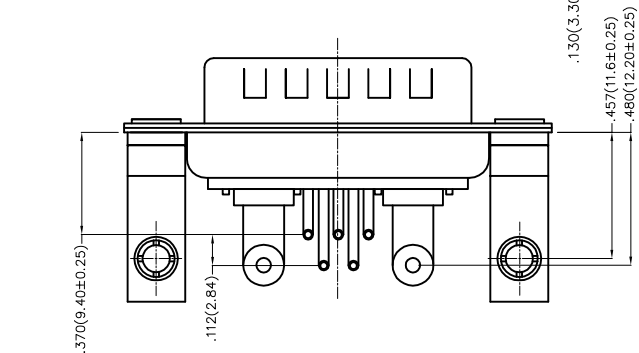
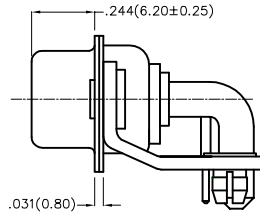
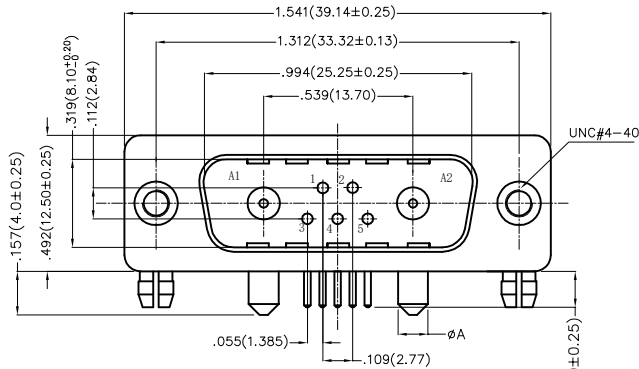
REV	LOCATIONS	DESCRIPTION	DATE	REVISER	APPD

1. Electrical Characteristic

- 1.1 Current Rating
Signal Contacts: 7.5A
Power Contacts: 10 to 40A
- 1.2 Voltage Rating: 300V
- 1.3 Contact Resistance: 5 Milliohms Max
- 1.4 Insulation Resistance: 5000 Megaohms Min.
- 1.5 Dielectric Withstanding Voltage : 1000V AC r.m.s Min

2. Materials And Finish

- 2.1 Shell: Steel Material, Front Nickel Plated 80u" Min
Back Shell Tin Plated 100u" Min
- 2.2 Insulator: Glass Filled Thermoplastic, UL 94V-0 , Colour: Black
- 2.3 Signal Contacts: Brass /Gold Plated 1u"~30u"
- 2.4 Power Contacts: Brass /Gold Plated 3u"~30u"
- 3. Temperature Range-Operating: -55°C ~ +105°C




Recommended P.C.Board Layout

Type	Part NO.	φA	PCB. φB	Current Rating(A)
A	FDP0711-MODB1XXK6KA	.067(1.70)	.079(2.00)	10
B	FDP0711-MODB1XXK6KB	.108(2.75)	.118(3.00)	20
C	FDP0711-MODB1XXK6KC	.130(3.30)	.142(3.60)	30
D	FDP0711-MODB1XXK6KD	.150(3.80)	.161(4.10)	40

Ordering Information

FDP 07 11 — MO D B 1 XX K6 K X
1 2 3 4 5 6 7 8 9 10 11

1 D-sub Connector Category FDP—Power Type	2 Circuits 07—7W2	3 Distinction No. 11	4 Type MO—Male	5 Assembly Layout D—DIP	6 Entry Angle B—90° Angle
7 Plating 1—Gold Plated	8 Thickness of Plating 03—3u" 15—15u" 30—30u"	9 Color—Resin K6—Black	10 Packaging K—Tray	11 Type A—Type A C—Type C B—Type B D—Type D	

THIRD ANGLE PROJECTION	GENERAL TOLERANCES (UNLESS SPECIFIED)		APPROVE BY FRANK	DATE 19/JUL/13	PART NO. FDP0711-MODB1XK6KX	ITEM NO. FDP0711-M	 Leader Of Industry
	DESIGN UNITS Inch (metric)	X.±.012(0.30) X.X±.008(0.20)	X'±5' .XX'±2'	CHECKED BY CHERRY	DATE 19/JUL/13	TITLE POWER MACHINED CONTACT HYBRID D-SUB MALE 7W2 CONN	
SCALE 5:1	SIZE A4	X.XX±.006(0.15) X.XXX±.004(0.10)	.XX'±1' .XXX'±0.5'	DRAWN BY JACOB	DATE 19/JUL/13	THIS DRAWING CONTAINS INFORMATION THAT IS PROPRIETARY TO TXGA INDUSTRIAL ELECTRONICS(S.Z)CO.,LTD AND SHOULD NOT BE USED WITHOUT WRITTEN PERMISSION	