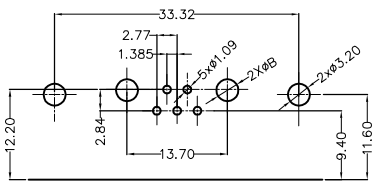
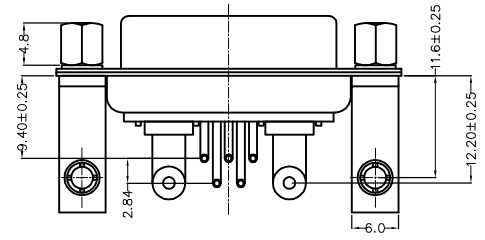
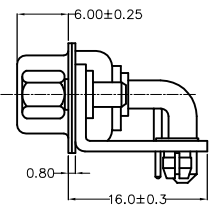
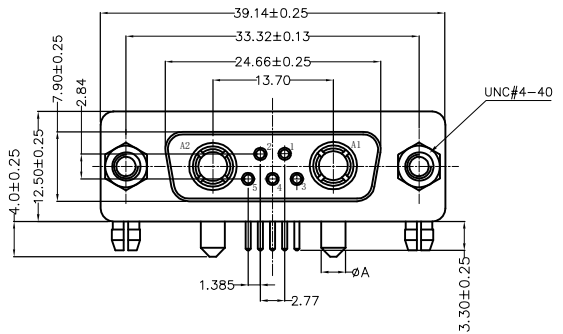
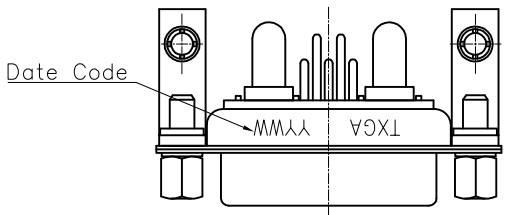


REV	LOCATIONS	DESCRIPTION	DATE	REVISER	APPD

**SPECIFICATIONS**

**Electrical Characteristic**  
**Current Rating:**  
 Signal contacts: 5A  
 Power contacts: 10 to 40A  
**Voltage Rating:** 300V  
**Contact Resistance:** 5mΩ Max.  
**Insulation Resistance:** 5000 MΩ Min.  
**Dielectric Withstanding Voltage:** 1000V AC r.m.s Min  
**Temperature Range—Operating:** -55°C ~ +105°C

**Material and plating**  
 Shell: Steel, Nickel Plated 80μ" Min  
 Back Shell: Steel, Tin Plated 100μ" Min  
 Insulator: PBT (UL 94V-0)  
 Signal contacts: Brass/ Gold Plated  
 Power Contacts: Brass/ Gold Plated  
 Board Lock: Copper Alloy/ Tin Plated  
 Screws: Steel/Nickel Plated  
 Salt spray : 24H Min.



Recommended P.C.Board Layout  
 General tolerances: ±0.05mm

Type	Part NO.	øA	PCB. øB	Current Rating(A)
A	FDP0714-F0DB1XXBKKA	1.70	2.00	10
B	FDP0714-F0DB1XXBKKB	2.75	3.00	20
C	FDP0714-F0DB1XXBKKC	3.30	3.60	30
D	FDP0714-F0DB1XXBKKD	3.80	4.10	40

**Ordering Information**

FDP 07 14 — F0 D B 1 XX BK K X  
 1 2 3 4 5 6 7 8 9 10 11

1   D-sub Connector Category FDP—Power Type	2   Circuits 07—7W2	3   Distinction No. 14	4   Type F0—Female	5   Assembly Layout D—DIP	6   Entry Angle B—90° Angle
7   Plating 1—Gold Plated	8   Thickness of Plating 03—0.075μm 15—0.375μm 30—0.75μm	9   Color—Resin BK—Black	10   Packaging K—Tray	11   Type A—Type A C—Type C B—Type B D—Type D	

<p>THIRD ANGLE PROJECTION</p>	GENERAL TOLERANCES (UNLESS SPECIFIED) X. ±0.30 X.* ±5° X.X ±0.20 X.X* ±2° X.XX ±0.15 X.XX* ±1° X.XXX ±0.10 X.XXX* ±0.5°		APPROVE BY LEO DATE 20/JUL/24	PART NO. FDP0714-F0DB1XXBKXX ITEM NO. FDP0714	<p><b>TXGA</b>                  Building Technology Cornerstone</p>
	DESIGN UNITS METRIC(mm) SCALE 5:1 SIZE A4	CHECKED BY GISELLE DATE 20/JUL/24	DRAWN BY MATT DATE 20/JUL/24	TITLE Hight current D-SUB connector 7W2 90°Angle Female(DIP) THIS DRAWING CONTAINS INFORMATION THAT IS PROPRIETARY TO TXGA INDUSTRIAL ELECTRONICS(S.Z)CO.,LTD AND SHOULD NOT BE USED WITHOUT WRITTEN PERMISSION	

REV	LOCATIONS	DESCRIPTION	DATE	REVISER	APPD

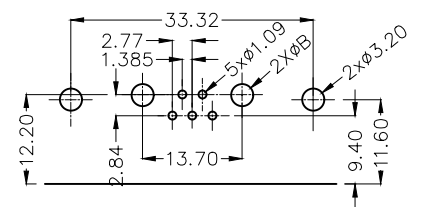
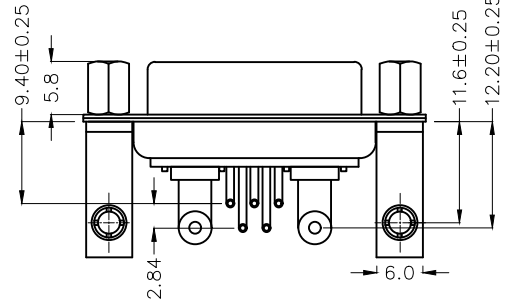
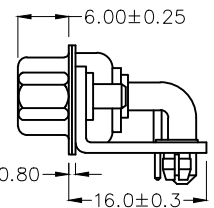
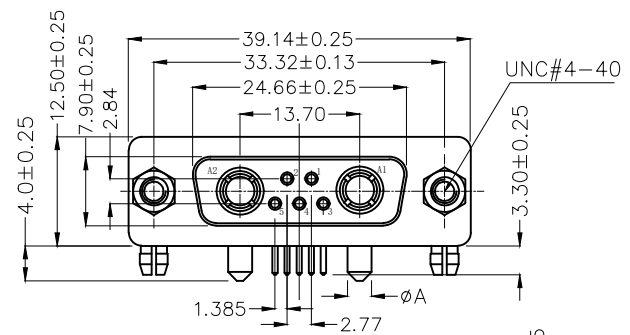
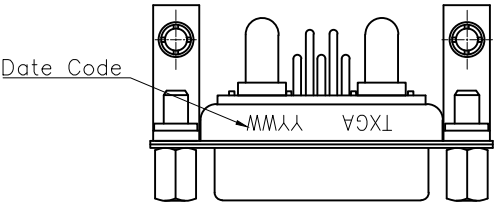
**SPECIFICATIONS**

**Electrical Characteristic**

Current Rating:  
 Signal contacts: 5A  
 Power contacts: 10 to 40A  
 Voltage Rating: 300V  
 Contact Resistance: 5mΩ Max.  
 Insulation Resistance: 5000 MΩ Min.  
 Dielectric Withstanding Voltage: 1000V AC r.m.s Min  
 Temperature Range-Operating: -55°C ~ +105°C

**Material and plating**

Shell: Steel, Nickel Plated 80μ" Min  
 Back Shell: Steel, Tin Plated 100μ" Min  
 Insulator: PBT (UL 94V-0)  
 Signal contacts: Brass/ Gold Plated  
 Power Contacts: Brass/ Gold Plated  
 Board Lock: Copper Alloy/ Tin Plated  
 Screws: Steel/Nickel Plated  
 Salt spray : 24H Min.



Recommended P.C.Board Layout  
 General tolerances: ±0.05mm

Type	Part NO.	øA	PCB. øB	Current Rating(A)
A	FDP0714-F0DB1XXBKKAA	1.70	2.00	10
B	FDP0714-F0DB1XXBKKBA	2.75	3.00	20
C	FDP0714-F0DB1XXBKKCA	3.30	3.60	30
D	FDP0714-F0DB1XXBKKDA	3.80	4.10	40

**Ordering Information**

FDP 07 14 — F0 D B 1 XX BK K X A  
 1 2 3 4 5 6 7 8 9 10 11 12

1   D-sub Connector Category FDP-Power Type	2   Circuits 07-7W2	3   Distinction No. 14	4   Type F0-Female	5   Assembly Layout D-DIP	6   Entry Angle B-90° Angle
7   Plating 1-Gold Plated	8   Thickness of Plating 03-0.075μm 15-0.375μm 30-0.75μm	9   Color-Resin BK-Black	10   Packaging K-Tray	11   Type A-Type A B-Type B C-Type C D-Type D	12   Type A-Type A

<p>THIRD ANGLE PROJECTION</p>	GENERAL TOLERANCES (UNLESS SPECIFIED) X. ±0.30 X.* ±5' X.X ±0.20 X.X* ±2' X.XX ±0.15 X.XX* ±1' X.XXX ±0.10 X.XXX* ±0.5'		APPROVE BY LEO	DATE 15/AUG/25	PART NO. FDP0714-F0DB1XXBKKXA	ITEM NO. FDP0714-F	<p>Building Technology Cornerstone</p>
	DESIGN UNITS METRIC	CHECKED BY GISELLE	DATE 15/AUG/25	TITLE High current D-SUB connector 7W2 90°Angle Female(DIP)	REV 0	SHEET NO. 1/1	
SCALE 5:1	SIZE A4	DRAWN BY NICK	DATE 15/AUG/25	THIS DRAWING CONTAINS INFORMATION THAT IS PROPRIETARY TO TXGA INDUSTRIAL ELECTRONICS(S.Z)CO.,LTD AND SHOULD NOT BE USED WITHOUT WRITTEN PERMISSION			