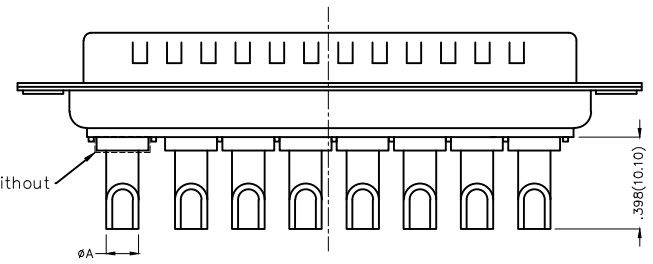
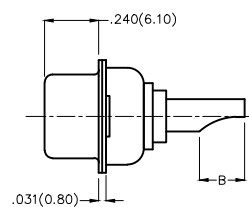
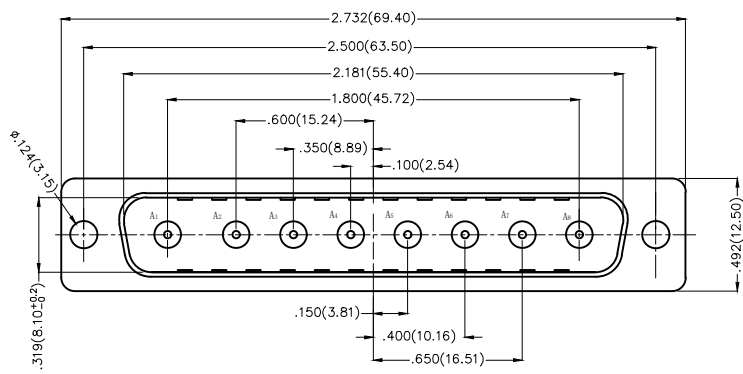
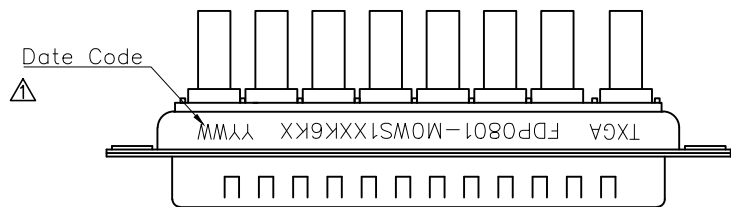


REV	LOCATIONS	DESCRIPTION	DATE	REVISER	APPD
1	△	1.Add marking code 2.Version change	22/Aug/25	NICK	LEO



- Electrical Characteristic
  - Current Rating  
Power Contacts: 10 to 40A
  - Voltage Rating: 300V
  - Contact Resistance: 5Milliohms Max
  - Insulation Resistance: 5000 Megaohms Min.
  - Dielectric Withstanding Voltage : 1000V AC r.m.s Min
- Materials And Finish
  - Shell: Steel Material, Front Nickel Plated 80u Min  
Back Shell Tin Plated 100u Min
  - Insulator: Glass Filled Thermoplastic, UL 94V-0 , Colour: Black
  - Power Contacts: Brass/Gold Plated 3u~30u
- Temperature Range—Operating: -55°C ~ +105°C

Type	Part NO.	A	B	Wire	Current Rating(A)
A	FDP0801-MOWS1XXK6KA	∅.102(2.60)	.217(5.50)	14#~16#	10
B	FDP0801-MOWS1XXK6KB	∅.142(3.60)	.217(5.50)	10#~12#	20
C	FDP0801-MOWS1XXK6KC	∅.177(4.50)	.217(5.50)	8#~10#	30
D	FDP0801-MOWS1XXK6KD	∅.213(5.40)	.217(5.50)	6#~8#	40

### Ordering Information

FDP 08 01 — M0 W S 1 XX K6 K X  
 1 2 3 4 5 6 7 8 9 10 11

1   D-sub Connector Category   FDP—Power Type	2   Circuits   08—8W8	3   Distinction No.   01	4   Type   MO—Male	5   Assembly Layout   W—Welding Type	6   Entry Angle   S—Vertical
7   Plating   1—Gold Plated	8   Thickness of Plating   03—3u" 15—15u" 30—30u" .....	9   Color—Resin   K6—Black	10   Packaging   K—Tray	11   Type   A—Type A C—Type C B—Type B D—Type D	

 THIRD ANGLE PROJECTION	GENERAL TOLERANCES (UNLESS SPECIFIED)		APPROVE BY FRANK	DATE 19/JUL/13	PART NO. FDP0801-MOWS1XXK6KX	ITEM NO. FDP0801-M	 Leader Of Industry
	DESIGN UNITS Inch (metric)	X.±.012(0.30) X.X±.008(0.20)	X.±5" .X'±2"	CHECKED BY CHERRY	DATE 19/JUL/13	TITLE POWER MACHINED CONTACT MALE 8W8 CONN	
SCALE 5:1	SIZE A4	X.XX±.006(0.15) X.XXX±.004(0.10)	.XX'±1" .XXX'±0.5"	DRAWN BY JACOB	DATE 19/JUL/13	THIS DRAWING CONTAINS INFORMATION THAT IS PROPRIETARY TO TXGA INDUSTRIAL ELECTRONICS(S.Z)CO.,LTD AND SHOULD NOT BE USED WITHOUT WRITTEN PERMISSION	

REV 1 SHEET NO. 1/1