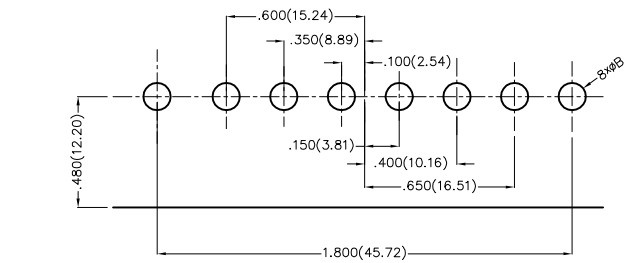
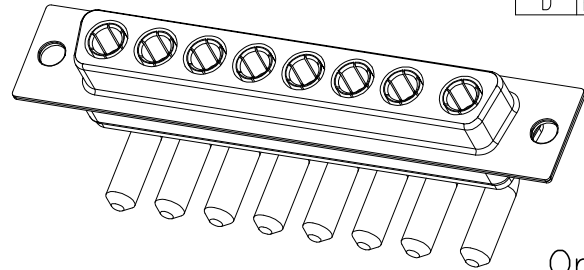
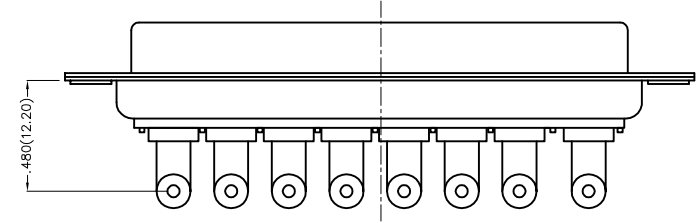
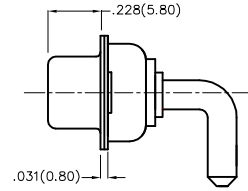
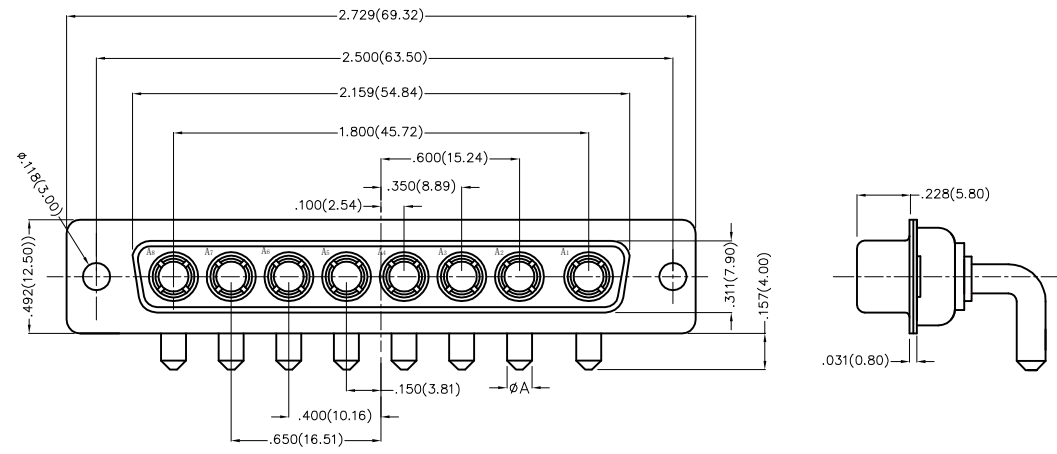


REV	LOCATIONS	DESCRIPTION	DATE	REVISER	APPD



Recommended P.C.Board Layout

1.Electrical Characteristic

- 1.1Current Rating  
Power Contacts:10 to 40A
- 1.2Voltage Rating:300V
- 1.3Contact Resistance:5Milliohms Max
- 1.4Insulation Resistance:5000 Megaohms Min.
- 1.5Dielectric Withstanding Voltage :1000V AC r.m.s Min

2.Materials And Finish

- 2.1Shell:Steel Material,Front Nickel Plated 80u" Min  
Back Shell Tin Plated 100u" Min
- 2.2Insulator:Glass Filled Thermoplastic, UL 94V-0 ,Colour: Black
- 2.3Power Contacts:Bronze /Gold Plated 3u~30u"
- 3.Temperature Range-Operating: -55°C ~ +105°C

Type	Part NO.	ØA	PCB. ØB	Current Rating(A)
A	FDP0802-F0DB1XXK6KA	.067(1.70)	.079(2.00)	10
B	FDP0802-F0DB1XXK6KB	.108(2.75)	.118(3.00)	20
C	FDP0802-F0DB1XXK6KC	.130(3.30)	.142(3.60)	30
D	FDP0802-F0DB1XXK6KD	.150(3.80)	.161(4.10)	40

Ordering Information

FDP 08 02 — F0 D B 1 XX K6 K X  
1 2 3 4 5 6 7 8 9 10 11

1   D-sub Connector Category FDP-Power Type	2   Circuits 08-8W8	3   Distinction No. 02	4   Type F0-Female	5   Assembly Layout D-DIP	6   Entry Angle B-90° Angle
7   Plating 1-Gold Plated	8   Thickness of Plating 03-3u" 15-15u" 30-30u" .....	9   Color-Resin K6-Black	10   Packaging K-Tray	11   Type A-Type A C-Type C B-Type B D-Type D	

 THIRD ANGLE PROJECTION	GENERAL TOLERANCES (UNLESS SPECIFIED)		APPROVE BY FRANK	DATE 19/JUL/13	PART NO. FDP0802-F0DB1XXK6KX	ITEM NO. FDP0802-F	 Leader Of Industry
	DESIGN UNITS Inch (metric)	X.±.012(0.30) X.X±.008(0.20)	X:±5" .X:±2"	CHECKED BY CHERRY	DATE 19/JUL/13	TITLE POWER MACHINED CONTACT FEMALE 8W8 CONN	
SCALE 5:1	SIZE A4	X.XX±.006(0.15) X.XXX±.004(0.10)	.XX±1" .XX±0.5"	DRAWN BY JACOB	DATE 19/JUL/13	THIS DRAWING CONTAINS INFORMATION THAT IS PROPRIETARY TO TXGA INDUSTRIAL ELECTRONICS(S.Z)CO.,LTD AND SHOULD NOT BE USED WITHOUT WRITTEN PERMISSION	