

REV	LOCATIONS	DESCRIPTION	DATE	REVISER	APPD
1	△	Change the structure and size	24/AUG/20	KATE	CHERRY
2	△	Add marking code	15/MAY/25	KATE	LEO

SPECIFICATIONS

Electrical Characteristic
 Current Rating:
 Signal contacts: 7.5A
 Power contacts: 10 to 40A
 Voltage Rating: 300V
 Contact Resistance: 5mΩ Max.
 Insulation Resistance: 5000 MΩ Min.
 Dielectric Withstanding Voltage: 1000V AC r.m.s Min
 Temperature Range-Operating: -55°C ~ +105°C

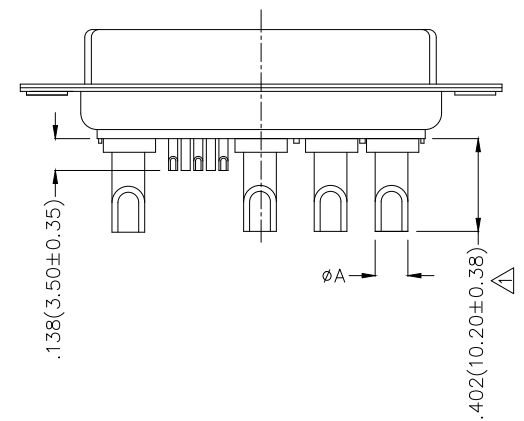
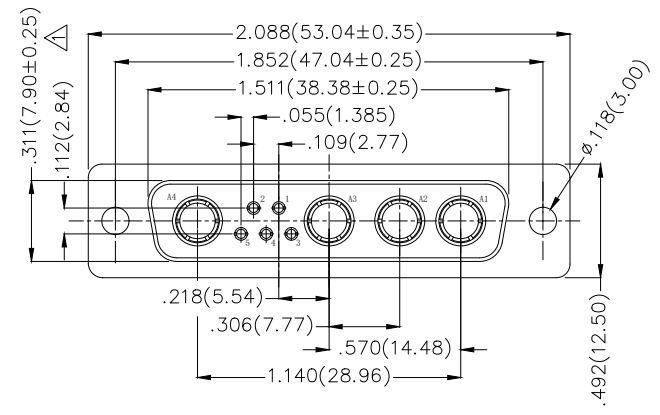
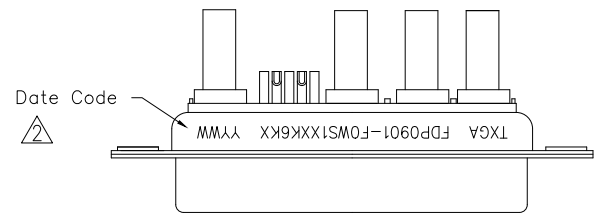
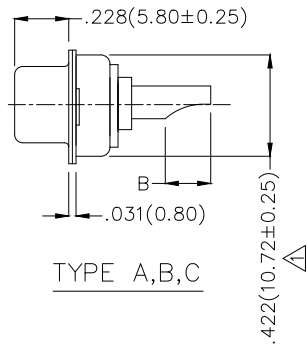
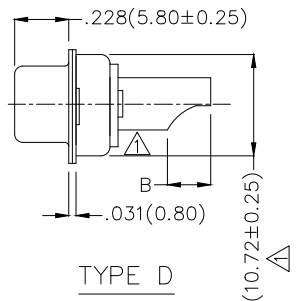
Material and plating
 Shell: Steel, Nickel Plated 80μ" Min
 Back Shell: Steel, Tin Plated 100μ" Min
 Insulator: Glass Filled Thermoplastic (UL 94V-0)
 Signal contacts: Brass/ Gold Plated
 Power Contacts: Brass/ Gold Plated

Type	Part NO.	øA	B	Wire	Current Rating(A)
A	FDP0901-FOWS1XXK6KA	.098(2.50)	.177(4.5)	14#~16#	10
B	FDP0901-FOWS1XXK6KB	.142(3.60)	.197(5.0)	10#~12#	20
C	FDP0901-FOWS1XXK6KC	.173(4.40)	.217(5.5)	8#~10#	30
D	FDP0901-FOWS1XXK6KD	.217(5.50)	.217(5.5)	6#~8#	40

Ordering Information

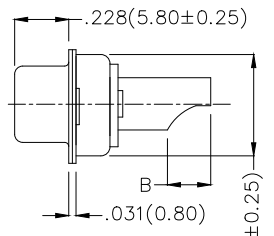
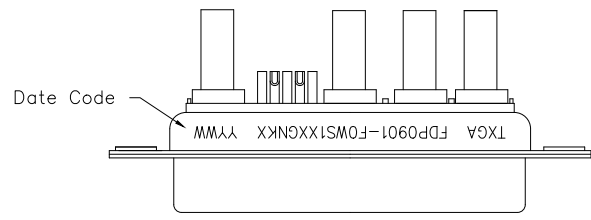
FDP 09 01 - F0 W S 1 XX K6 K X
 1 2 3 4 5 6 7 8 9 10 11

1 Category FDP-Hight current D-SUB connector	2 Circuits 09-9W4	3 Distinction No. 01	4 Type FO-Female	5 Assembly Layout W-Welding Type
6 Entry Angle S-180° Vertical	7 Plating 1-Gold Plated	8 Thickness of Plating 03-3μ" 15-15μ" Custom Plate Available	9 Color-Resin K6-Black	10 Packaging K-Tray
		11 Distinction Type A-Type A B-Type B C-Type C D-Type D		



<p>THIRD ANGLE PROJECTION</p>	GENERAL TOLERANCES (UNLESS SPECIFIED)		APPROVE BY FRANK	DATE 19/JUL/13	PART NO. FDP0901-FOWS1XXK6KX	ITEM NO. FDP0901-F	<p>Building Technology Cornerstone</p>	
	X.±.012(0.30)	X.±5'	CHECKED BY CHERRY	DATE 19/JUL/13	TITLE Hight current D-SUB connector 9W4 180° Vertical Female			REV 2
	DESIGN UNITS Inch (metric)	X.XX±.008(0.20)	.X'±2'	DRAWN BY JACOB	DATE 19/JUL/13	THIS DRAWING CONTAINS INFORMATION THAT IS PROPRIETARY TO TXGA INDUSTRIAL ELECTRONICS(S.Z)CO.,LTD AND SHOULD NOT BE USED WITHOUT WRITTEN PERMISSION		SHEET NO. 1/1
	SCALE 5:1	SIZE A4	X.XX±.006(0.15)					

REV	LOCATIONS	DESCRIPTION	DATE	REVISER	APPD

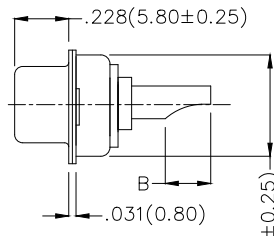
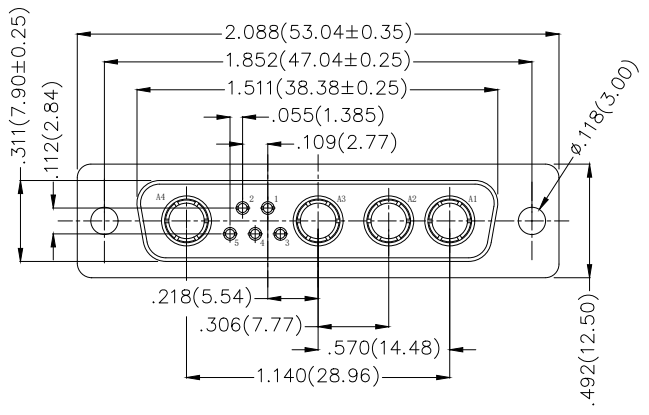


TYPE D

SPECIFICATIONS

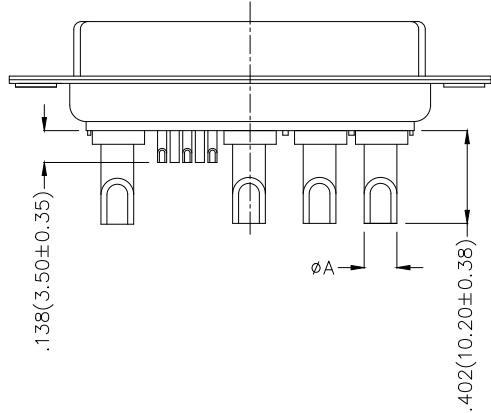
Electrical Characteristic
 Current Rating:
 Signal contacts: 7.5A
 Power contacts: 10 to 40A
 Voltage Rating: 300V
 Contact Resistance: 5mΩ Max.
 Insulation Resistance: 5000 MΩ Min.
 Dielectric Withstanding Voltage: 1000V AC r.m.s Min
 Temperature Range-Operating: -55°C ~ +105°C

Material and plating
 Shell: Stainless Steel, Nickel Plated 80μ" Min
 Insulator: Glass Filled Thermoplastic (UL 94V-0)
 Signal contacts: Brass/ Gold Plated
 Power Contacts: Brass/ Gold Plated



TYPE A,B,C

Type	Part NO.	øA	B	Wire	Current Rating(A)
A	FDP0901-FOWS1XXGNKA	.098(2.50)	.177(4.5)	14#~16#	10
B	FDP0901-FOWS1XXGNKB	.142(3.60)	.197(5.0)	10#~12#	20
C	FDP0901-FOWS1XXGNKC	.173(4.40)	.217(5.5)	8#~10#	30
D	FDP0901-FOWS1XXGNKD	.217(5.50)	.217(5.5)	6#~8#	40



Ordering Information

FDP 09 01 - F0 W S 1 XX GN K X
 1 2 3 4 5 6 7 8 9 10 11

1 Category FDP-Hight current D-SUB connector	2 Circuits 09-9W4	3 Distinction No. 01	4 Type FO-Female	5 Assembly Layout W-Welding Type
6 Entry Angle S-180° Vertical	7 Plating 1-Gold Plated	8 Thickness of Plating 03-3μ" 15-15μ" Custom Plate Available	9 Color-Resin GN-Green	10 Packaging K-Tray
			11 Distinction Type A-Type A B-Type B C-Type C D-Type D	

 THIRD ANGLE PROJECTION	GENERAL TOLERANCES (UNLESS SPECIFIED)		APPROVE BY FRANK	DATE 19/OCT/25	PART NO. FDP0901-FOWS1XXGNKX	ITEM NO. FDP0901-F	 Building Technology Cornerstone	
	X.±.012(0.30)	X.±5'	CHECKED BY CHERRY	DATE 09/OCT/25	TITLE Hight current D-SUB connector 9W4 180° Vertical Female			REV 1
	DESIGN UNITS Inch (metric)	X.XX±.008(0.20)	.X'±2'	DRAWN BY PYD	DATE 09/OCT/25	THIS DRAWING CONTAINS INFORMATION THAT IS PROPRIETARY TO TXGA INDUSTRIAL ELECTRONICS(S.Z)CO.,LTD AND SHOULD NOT BE USED WITHOUT WRITTEN PERMISSION		SHEET NO. 1/1
	SCALE 5:1	SIZE A4	X.XX±.006(0.15)					

REV	LOCATIONS	DESCRIPTION	DATE	REVISER	APPD
1		Change the structure and size	24/AUG/20	KATE	CHERRY
2		Add marking code	15/MAY/25	KATE	LEO

SPECIFICATIONS

Electrical Characteristic

Current Rating:
 Signal contacts: 7.5A
 Power contacts: 10 to 40A
 Voltage Rating: 300V
 Contact Resistance: 5mΩ Max.
 Insulation Resistance: 5000 MΩ Min.
 Dielectric Withstanding Voltage: 1000V AC r.m.s Min
 Temperature Range—Operating: -55°C ~ +105°C

Material and plating

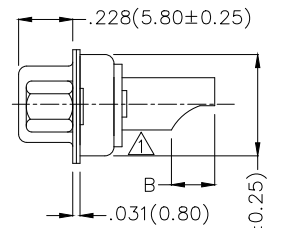
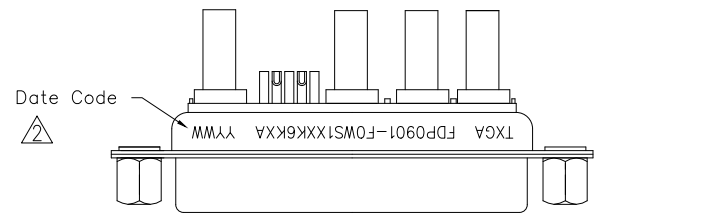
Shell: Steel, Nickel Plated 80μ" Min
 Back Shell: Steel, Tin Plated 100μ" Min
 Insulator: Glass Filled Thermoplastic (UL 94V-0)
 Signal contacts: Brass/ Gold Plated
 Power Contacts: Brass/ Gold Plated
 Nut: Steel/ Nickel Plated

Type	Part NO.	øA	B	Wire	Current Rating(A)
A	FDP0901-FOWS1XXK6KAA	.098(2.50)	.177(4.5)	14#~16#	10
B	FDP0901-FOWS1XXK6KBA	.142(3.60)	.197(5.0)	10#~12#	20
C	FDP0901-FOWS1XXK6KCA	.173(4.40)	.217(5.5)	8#~10#	30
D	FDP0901-FOWS1XXK6KDA	.217(5.50)	.217(5.5)	6#~8#	40

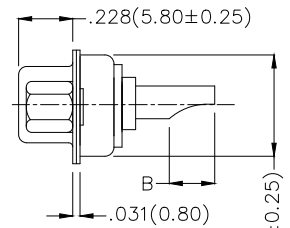
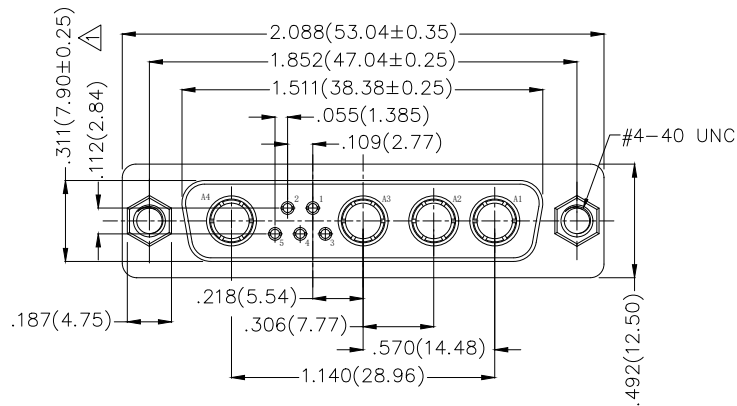
Ordering Information

FDP 09 01 - FO W S 1 XX K6 K X A
 1 2 3 4 5 6 7 8 9 10 11 12

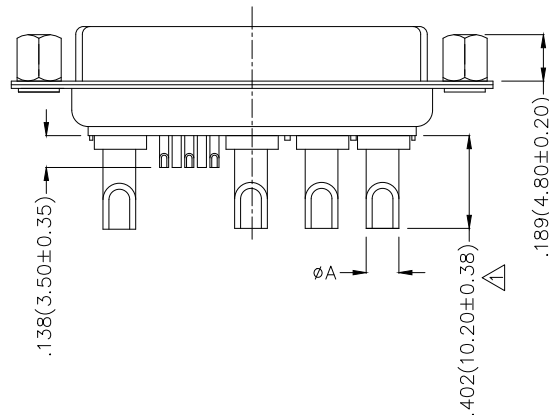
1	Category FDP-Hight current D-SUB connector	2	Circuits 09-9W4	3	Distinction No. 01	4	Type FO-Female	5	Assembly Layout W-Welding Type	6	Entry Angle S-180° Vertical
7	Plating 1-Gold Plated	8	Thickness of Plating 03-3μ" 15-15μ" Custom Plate Available	9	Color-Resin K6-Black	10	Packaging K-Tray	11	Distinction Type A-Type A B-Type B C-Type C D-Type D	12	Product Type A-Front Nut (H=4.8mm)



TYPE D



TYPE A,B,C



 THIRD ANGLE PROJECTION DESIGN UNITS Inch (metric) SCALE 5:1 SIZE A4	GENERAL TOLERANCES (UNLESS SPECIFIED)		APPROVE BY FRANK	DATE 19/JUL/13	PART NO. FDP0901-FOWS1XXK6KXA	ITEM NO. FDP0901-F	 Building Technology Cornerstone REV 2 SHEET NO. 1/1 THIS DRAWING CONTAINS INFORMATION THAT IS PROPRIETARY TO TXGA INDUSTRIAL ELECTRONICS(S.Z)CO.,LTD AND SHOULD NOT BE USED WITHOUT WRITTEN PERMISSION
	X.±.012(0.30)	X.±5°	CHECKED BY CHERRY	DATE 19/JUL/13	TITLE Hight current D-SUB connector 9W4 180° Vertical Female		
	X.XX±.008(0.20)	.X'±2°	DRAWN BY JACOB	DATE 19/JUL/13			
	X.XX±.006(0.15)	.XX'±1°					
X.XXX±.004(0.10)		.XXX'±0.5°					

REV	LOCATIONS	DESCRIPTION	DATE	REVISER	APPD
1		Change the structure and size	24/AUG/20	KATE	CHERRY
2		Add marking code	15/MAY/25	KATE	LEO

SPECIFICATIONS

Electrical Characteristic
 Current Rating:
 Signal contacts: 7.5A
 Power contacts: 10 to 40A
 Voltage Rating: 300V
 Contact Resistance: 5mΩ Max.
 Insulation Resistance: 5000 MΩ Min.
 Dielectric Withstanding Voltage: 1000V AC r.m.s Min
 Temperature Range—Operating: -55°C ~ +105°C

Material and plating
 Shell: Steel, Nickel Plated 80μ" Min
 Back Shell: Steel, Tin Plated 100μ" Min
 Insulator: Glass Filled Thermoplastic (UL 94V-0)
 Signal contacts: Brass/ Gold Plated
 Power Contacts: Brass/ Gold Plated
 Screw: Copper alloy/ Nickel Plated
 Nut: Steel/ Nickel Plated

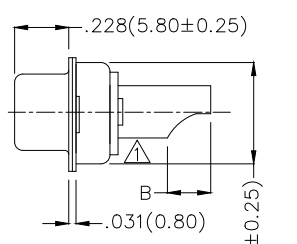
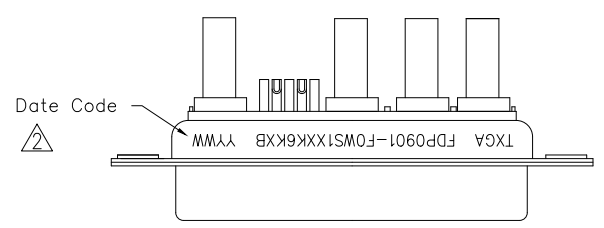
Type	Part NO.	øA	B	Wire	Current Rating(A)
A	FDP0901-FOWS1XXK6KAB	.098(2.50)	.177(4.5)	14#~16#	10
B	FDP0901-FOWS1XXK6KBB	.142(3.60)	.197(5.0)	10#~12#	20
C	FDP0901-FOWS1XXK6KCB	.173(4.40)	.217(5.5)	8#~10#	30
D	FDP0901-FOWS1XXK6KDB	.217(5.50)	.217(5.5)	6#~8#	40

Ordering Information

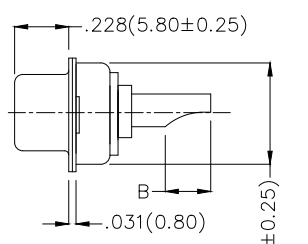
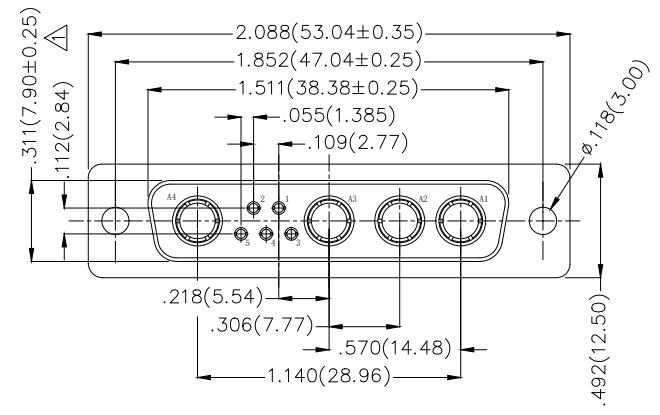
FDP 09 01 - F0 W S 1 XX K6 K X B
 1 2 3 4 5 6 7 8 9 10 11 12

1 Category FDP—Hight current D-SUB connector	2 Circuits 09-9W4	3 Distinction No. 01	4 Type FO-Female	5 Assembly Layout W-Welding Type	6 Entry Angle S-180° Vertical
7 Plating 1-Gold Plated	8 Thickness of Plating 03-3μ" 15-15μ" Custom Plate Available	9 Color-Resin K6-Black	10 Packaging K-Tray	11 Distinction Type A-Type A B-Type B C-Type C D-Type D	12 Product Type B-With screw

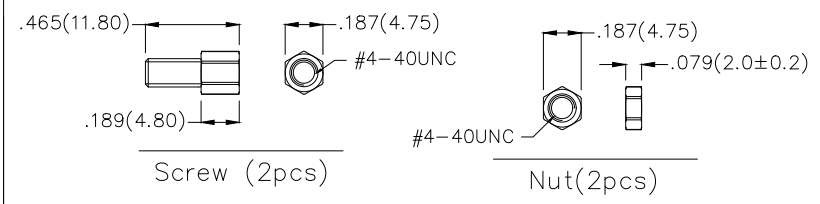
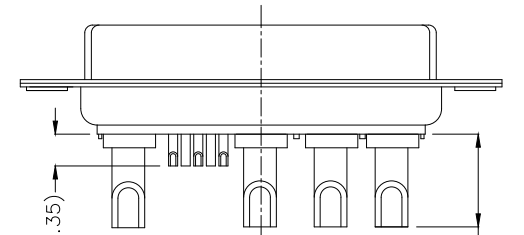
 THIRD ANGLE PROJECTION DESIGN UNITS Inch (metric) SCALE 5:1 SIZE A4	GENERAL TOLERANCES (UNLESS SPECIFIED) X.±.012(0.30) X.±5" X.X±.008(0.20) .X±2" X.XX±.006(0.15) .XX±1" X.XXX±.004(0.10) .XXX±0.5"		APPROVE BY FRANK CHECKED BY CHERRY DRAWN BY JACOB	DATE 19/JUL/13 DATE 19/JUL/13 DATE 19/JUL/13	PART NO. FDP0901-FOWS1XXK6KXB TITLE Hight current D-SUB connector 9W4 180° Vertical Female	ITEM NO. FDP0901-F	 Building Technology Cornerstone REV 2 SHEET NO. 1/1
	THIS DRAWING CONTAINS INFORMATION THAT IS PROPRIETARY TO TXGA INDUSTRIAL ELECTRONICS(S.Z)CO.,LTD AND SHOULD NOT BE USED WITHOUT WRITTEN PERMISSION						



TYPE D



TYPE A,B,C



REV	LOCATIONS	DESCRIPTION	DATE	REVISER	APPD
1		Change the structure and size	24/AUG/20	KATE	CHERRY
2		Add marking code	15/MAY/25	KATE	LEO

SPECIFICATIONS

Electrical Characteristic
 Current Rating:
 Signal contacts: 7.5A
 Power contacts: 10 to 40A
 Voltage Rating: 300V
 Contact Resistance: 5mΩ Max.
 Insulation Resistance: 5000 MΩ Min.
 Dielectric Withstanding Voltage: 1000V AC r.m.s Min
 Temperature Range—Operating: -55°C ~ +105°C

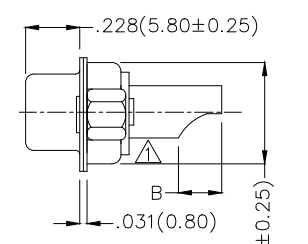
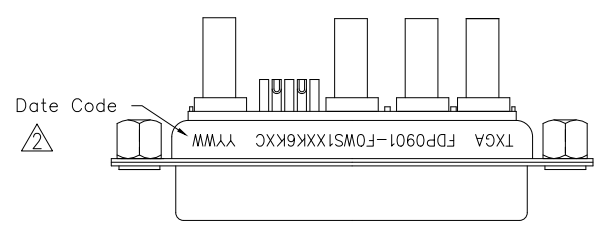
Material and plating
 Shell: Steel, Nickel Plated 80μ" Min
 Back Shell: Steel, Tin Plated 100μ" Min
 Insulator: Glass Filled Thermoplastic (UL 94V-0)
 Signal contacts: Brass/ Gold Plated
 Power Contacts: Brass/ Gold Plated
 Nut: Steel/ Nickel Plated

Type	Part NO.	øA	B	Wire	Current Rating(A)
A	FDP0901-FOWS1XXK6KAC	.098(2.50)	.177(4.5)	14#~16#	10
B	FDP0901-FOWS1XXK6KBC	.142(3.60)	.197(5.0)	10#~12#	20
C	FDP0901-FOWS1XXK6KCC	.173(4.40)	.217(5.5)	8#~10#	30
D	FDP0901-FOWS1XXK6KDC	.217(5.50)	.217(5.5)	6#~8#	40

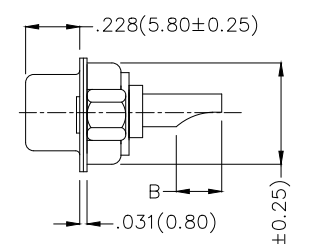
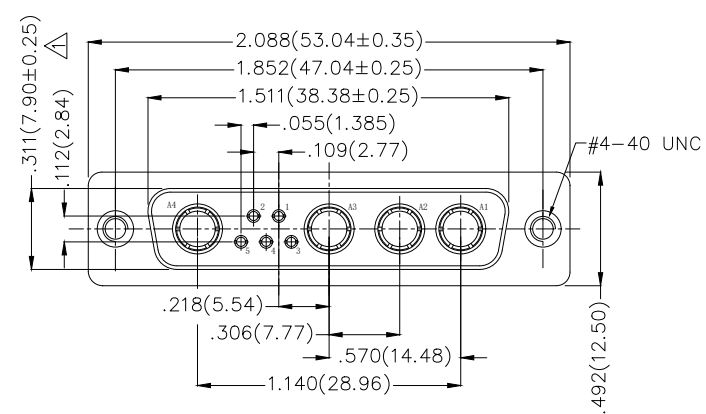
Ordering Information

FDP 09 01 - FO W S 1 XX K6 K X C
 1 2 3 4 5 6 7 8 9 10 11 12

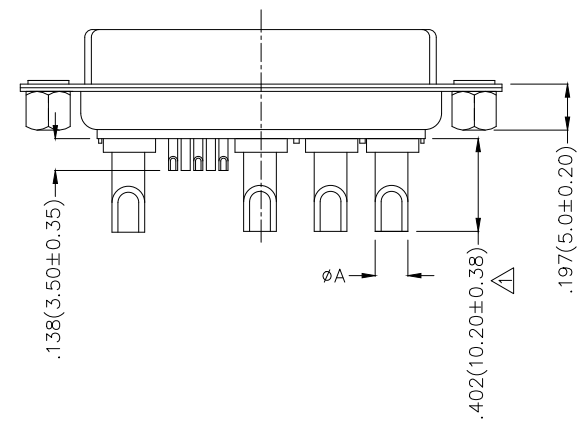
1 Category FDP—Hight current D-SUB connector	2 Circuits 09-9W4	3 Distinction No. 01	4 Type FO-Female	5 Assembly Layout W-Welding Type	6 Entry Angle S-180° Vertical
7 Plating 1-Gold Plated	8 Thickness of Plating 03-3μ" 15-15μ" Custom Plate Available	9 Color-Resin K6-Black	10 Packaging K-Tray	11 Distinction Type A-Type A B-Type B C-Type C D-Type D	12 Product Type C-Back Nut (H=4.0mm)



TYPE D



TYPE A,B,C



	GENERAL TOLERANCES (UNLESS SPECIFIED)		APPROVE BY FRANK	DATE 19/JUL/13	PART NO. FDP0901-FOWS1XXK6KXC	ITEM NO. FDP0901-F		
	X.±.012(0.30)	X.±5'	CHECKED BY CHERRY	DATE 19/JUL/13	TITLE Hight current D-SUB connector 9W4 180° Vertical Female			Building Technology Cornerstone
	DESIGN UNITS Inch (metric)	X.XX±.008(0.20)	X.±2'	DRAWN BY JACOB	DATE 19/JUL/13	THIS DRAWING CONTAINS INFORMATION THAT IS PROPRIETARY TO TXGA INDUSTRIAL ELECTRONICS(S.Z)CO.,LTD AND SHOULD NOT BE USED WITHOUT WRITTEN PERMISSION		REV 2 SHEET NO. 1/1
	SCALE 5:1	SIZE A4	X.XX±.006(0.15)	X.XX±1'	X.XXX±.004(0.10)	X.XX±0.5'		