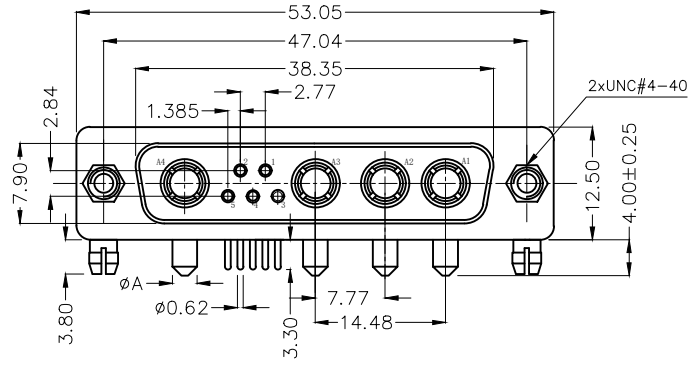
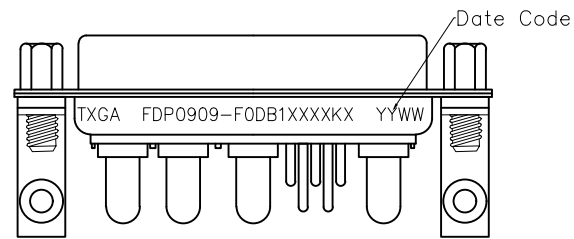
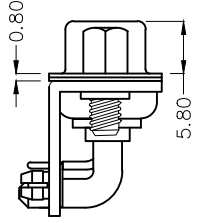
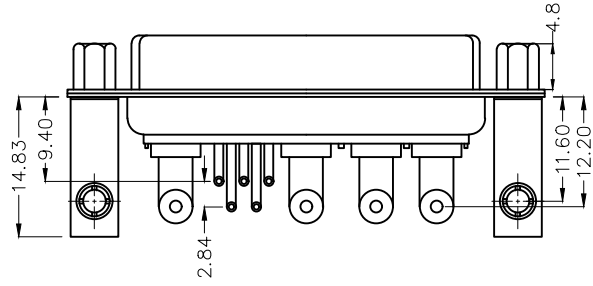


REV	LOCATIONS	DESCRIPTION	DATE	REVISER	APPD



SPECIFICATIONS
 Electrical Characteristic
 Current Rating: Signal contacts: 5A
 Power contacts: 10 to 40A
 Voltage Rating: 500V
 Contact Resistance: 30mΩ Max.
 Insulation Resistance: 3000 MΩ Min.
 Dielectric Withstanding Voltage: 1000V AC r.m.s Min
 Temperature Range—Operating: -55°C ~ +105°C
 Material and plating
 Shell: Steel, Nickel Plated. Back Shell: Steel, Tin Plated
 Insulator: PBT (UL 94V-0)
 Signal contacts: Copper Alloy/ Gold Plated
 Power Contacts: Copper Alloy/ Gold Plated
 Bracket: Steel/ Tin Plated
 Board Lock: Copper Alloy/ Tin Plated
 Screws: Steel/ Nickel Plated

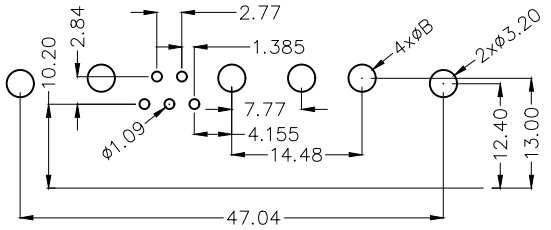


Type	Part NO.	A	B	Current Rating(A)
A	FDP0909-F0DB1XXXXKA	Ø1.70	Ø2.00	10
B	FDP0909-F0DB1XXXXKB	Ø2.75	Ø3.00	20
C	FDP0909-F0DB1XXXXKC	Ø3.30	Ø3.60	30
D	FDP0909-F0DB1XXXXKD	Ø3.80	Ø4.10	40

Ordering Information

FDP 09 09 — F0 D B 1 XX XX K X
 1 2 3 4 5 6 7 8 9 10 11

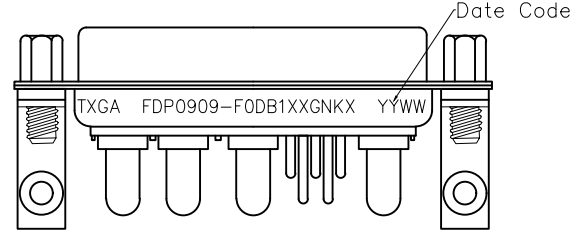
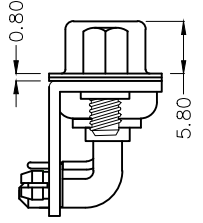
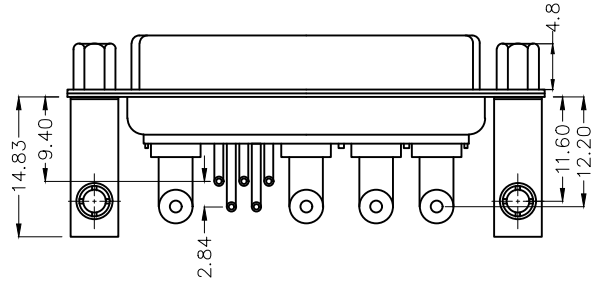
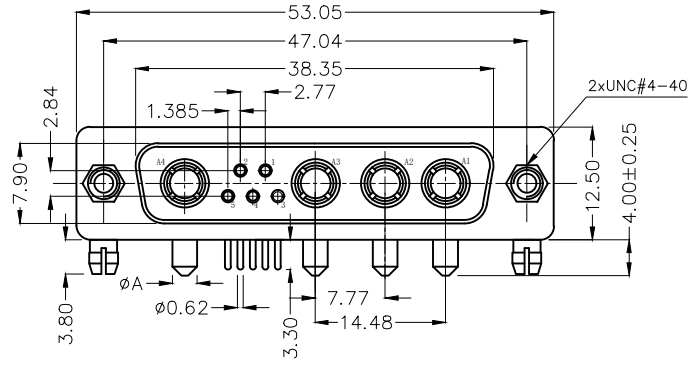
1 D-sub Connector Category FDP—Power Type	2 Circuits 09—9W4	3 Distinction No. 09	4 Type F0—Female	5 Assembly Layout D—DIP	6 Entry Angle B—90° Angle
7 Plating 1—Gold Plated	8 Thickness of Plating 01—1µ" 03—3µ" 15—15µ" Custom Plate Available	9 Color—Resin BK—Black	10 Packaging K—Tray	11 Pin Type A—Type A B—Type B C—Type C D—Type D	



Recommended P.C.Board Layout

<p>THIRD ANGLE PROJECTION</p>	GENERAL TOLERANCES (UNLESS SPECIFIED) X. ±0.30 X.* ±5° X.X ±0.20 X.X* ±2° X.XX ±0.15 X.XX* ±1° X.XXX ±0.10 X.XXX* ±0.5°		APPROVE BY LEO	DATE 25/JAN/25	PART NO. FDP0909-F0DB1XXXXKX	ITEM NO. FDP0909-F	<p>Building Technology Cornerstone</p>
	DESIGN UNITS METRIC	CHECKED BY GISELLE	DATE 25/JAN/25	TITLE Hight current D-SUB connector 9W4 90° Angle Female		REV 0	
SCALE 5:1	SIZE A4	DRAWN BY NICK	DATE 25/JAN/25	THIS DRAWING CONTAINS INFORMATION THAT IS PROPRIETARY TO TXGA INDUSTRIAL ELECTRONICS(S.Z)CO.,LTD AND SHOULD NOT BE USED WITHOUT WRITTEN PERMISSION			

REV	LOCATIONS	DESCRIPTION	DATE	REVISER	APPD



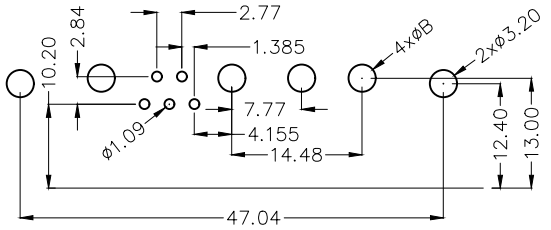
SPECIFICATIONS
 Electrical Characteristic
 Current Rating: Signal contacts:5A
 Power contacts:10 to40A
 Voltage Rating: 500V
 Contact Resistance: 30mΩ Max.
 Insulation Resistance: 3000 MΩ Min.
 Dielectric Withstanding Voltage: 1000V AC r.m.s Min
 Temperature Range-Operating: -55°C ~ +105°C
 Material and plating
 Shell: Stainless steel, Nickel Plated. Back Shell: Steel, Tin Plated
 Insulator: PBT (UL 94V-0)
 Signal contacts: Copper Alloy/ Gold Plated
 Power Contacts: Copper Alloy/ Gold Plated
 Bracket: Steel/ Tin Plated
 Board Lock: Copper Alloy/ Tin Plated
 Screws: Copper Alloy/ Nickel Plated

Type	Part NO.	A	B	Current Rating(A)
A	FDP0909-F0DB1XXGNKA	Ø1.70	Ø2.00	10
B	FDP0909-F0DB1XXGNKB	Ø2.75	Ø3.00	20
C	FDP0909-F0DB1XXGNKC	Ø3.30	Ø3.60	30
D	FDP0909-F0DB1XXGNKD	Ø3.80	Ø4.10	40

Ordering Information

FDP 09 09 — F0 D B 1 XX GN K X
 1 2 3 4 5 6 7 8 9 10 11

1 D-sub Connector Category FDP-Power Type	2 Circuits 09-9W4	3 Distinction No. 09	4 Type F0-Female	5 Assembly Layout D-DIP	6 Entry Angle B-90° Angle
7 Plating 1-Gold Plated	8 Thickness of Plating 01-1µ" 03-3µ" 15-15µ" Custom Plate Available	9 Color-Resin GN-Green	10 Packaging K-Tray	11 Pin Type A-Type A B-Type B C-Type C D-Type D	



Recommended P.C.Board Layout

<p>THIRD ANGLE PROJECTION</p>	GENERAL TOLERANCES (UNLESS SPECIFIED) X. ±0.30 X.* ±5° X.X ±0.20 X.X* ±2° X.XX ±0.15 X.XX* ±1° X.XXX ±0.10 X.XXX* ±0.5°		APPROVE BY LEO	DATE 25/JAN/25	PART NO. FDP0909-F0DB1XXGNKX	ITEM NO. FDP0909-F	<p>Building Technology Cornerstone</p>
	DESIGN UNITS METRIC	CHECKED BY GISELLE	DATE 25/JAN/25	TITLE Hight current D-SUB connector 9W4 90° Angle Female		REV 0	
SCALE 5:1	SIZE A4	DRAWN BY NICK	DATE 25/JAN/25	THIS DRAWING CONTAINS INFORMATION THAT IS PROPRIETARY TO TXGA INDUSTRIAL ELECTRONICS(S.Z)CO.,LTD AND SHOULD NOT BE USED WITHOUT WRITTEN PERMISSION			