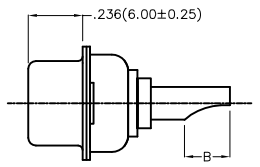
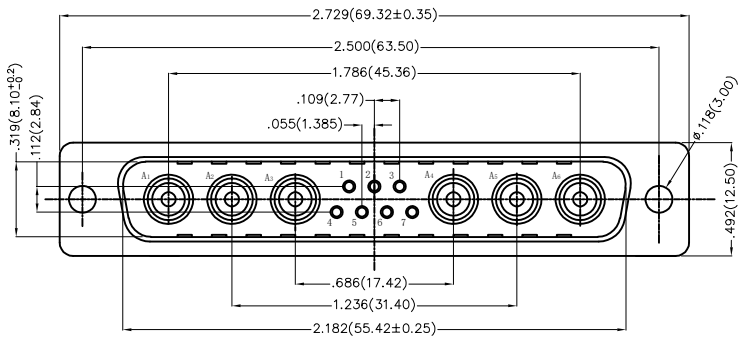


1 2 3 4 5 6 7 8

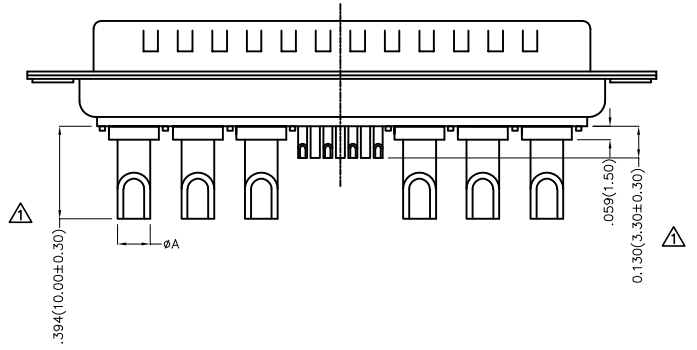
REV	LOCATIONS	DESCRIPTION	DATE	REVISER	APPD
1	△	1. Size changes	12/OCT/24	Nick	ERIC



- Electrical Characteristic
 - Current Rating
Signal Contacts: 7.5A
Power Contacts: 10 to 40A
 - Voltage Rating: 300V
 - Contact Resistance: 5 Milliohms Max
 - Insulation Resistance: 5000 Megaohms Min.
 - Dielectric Withstanding Voltage : 1000V AC r.m.s Min

- Materials And Finish
 - Shell: Steel Material, Front Nickel Plated 80u" Min
Back Shell Tin Plated 100u" Min
 - Insulator: Glass Filled Thermoplastic, UL 94V-0 , Colour: Black
 - Signal Contacts: Brass /Gold Plated 1u"~30u"
 - Power Contacts: Brass/Gold Plated 3u"~30u"
- Temperature Range-Operating: -55°C ~ +105°C

Type	Part NO.	A	B	Wire	Current Rating(A)
A	FDP1311-MOWS1XXK6KA	ø.098(2.50)	.177(4.50)	14#~16#	10
B	FDP1311-MOWS1XXK6KB	ø.142(3.60)	.197(5.00)	10#~12#	20
C	FDP1311-MOWS1XXK6KC	ø.173(4.40)	.217(5.50)	8#~10#	30
D	FDP1311-MOWS1XXK6KD	ø.217(5.50)	.217(5.50)	6#~8#	40



Ordering Information

FDP 13 11 — M0 W S 1 XX K6 K X
 1 2 3 4 5 6 7 8 9 10 11

1	D-sub Connector Series Name FDP-Power Type	2	Circuits 13-13W6	3	Distinction No. 11	4	Type MO-Male	5	Assembly Layout W-Welding Type	6	Entry Type S-Top entry type
7	Plating 1-Gold Flash	8	Thickness of Plating 03-3u" 15-15u" 30-30u"	9	Plastic Colour K6-Black	10	Packaging K-Tray	11	Type A-Type A C-Type C B-Type B D-Type D		

<p>THIRD ANGLE PROJECTION</p>	GENERAL TOLERANCES (UNLESS SPECIFIED)		APPROVE BY FRANK	DATE 19/JUL/13	PART NO. FDP1311-MOWS1XXK6KX	ITEM NO. FDP1311-M	<p>Leader Of Industry</p>	
	X.±.012(0.30)	X:±5'	CHECKED BY CHERRY	DATE 19/JUL/13	TITLE POWER MACHINED CONTACT HYBRID D-SUB MALE 13W6 CONN			REV 1
	X.X±.008(0.20)	.X'±2'	DRAWN BY JACOB	DATE 19/JUL/13	THIS DRAWING CONTAINS INFORMATION THAT IS PROPRIETARY TO TXGA INDUSTRIAL ELECTRONICS(S.Z)CO.,LTD AND SHOULD NOT BE USED WITHOUT WRITTEN PERMISSION			SHEET NO. 1/1
	X.XX±.006(0.15)	.XX'±1'						
SCALE 5:1	SIZE A4	X.XXX±.004(0.10)	.XXX'±0.5'					

1 2 3 4 5 6 7 8