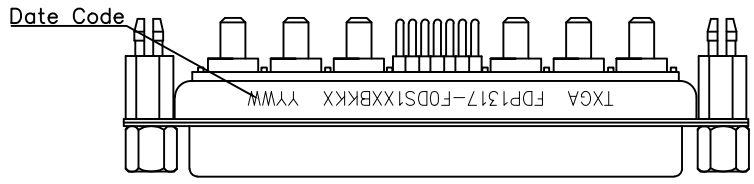
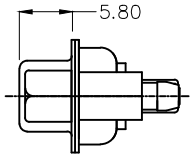
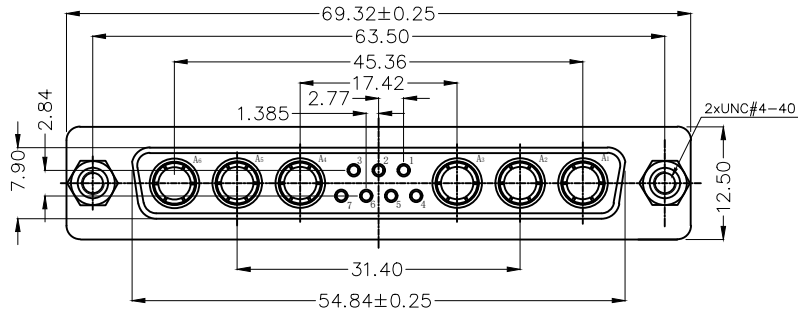


REV	LOCATIONS	DESCRIPTION	DATE	REVISER	APPD

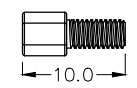
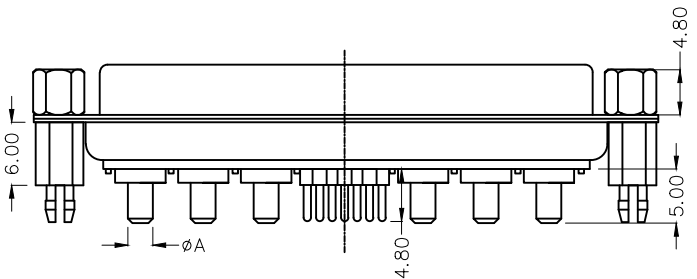


SPECIFICATIONS
Electrical Characteristic
 Current Rating:
 Signal contacts: 7.5A
 Power contacts: 10 to 40A
 Voltage Rating: 300V
 Contact Resistance: 10mΩ Max.
 Insulation Resistance: 5000 MΩ Min.
 Dielectric Withstanding Voltage: 1000V AC r.m.s Min
 Temperature Range-Operating: -55°C ~ +125°C

Material and plating
 Shell: Steel, Nickel Plated 80μ" Min
 Back Shell: Steel, Tin Plated 100μ" Min
 Insulator: PBT (UL 94V-0)
 Signal contacts: Brass/ Gold Plated
 Power Contacts: Brass/ Gold Plated
 Board Lock: Copper Alloy/ Tin Plated
 Screws: Copper alloy/Nickel Plated



Type	Part NO.	øA	PCB. øB	Current Rating(A)
A	FDP1317-FODS1XXBKKA	1.70	2.00	10
B	FDP1317-FODS1XXBKKB	2.75	3.00	20
C	FDP1317-FODS1XXBKKC	3.30	3.60	30
D	FDP1317-FODS1XXBKKD	3.80	4.10	40

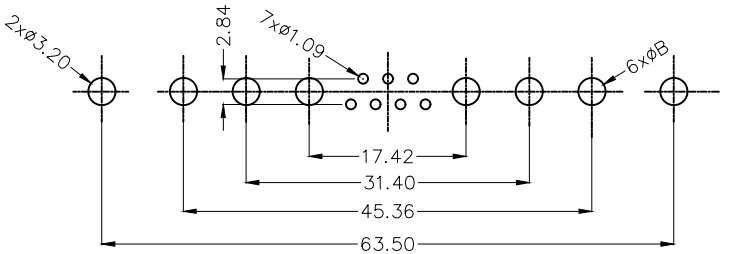


Screw length

Ordering Information

FDP 13 17 — FO D S 1 XX BK K X
 1 2 3 4 5 6 7 8 9 10 11

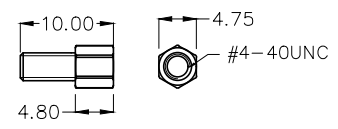
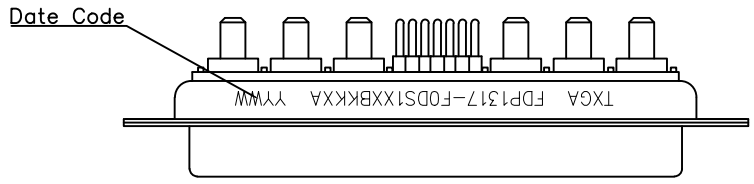
1 Category FDP-Hight current D-SUB connector	2 Circuits 13-13W6	3 Distinction No. 17	4 Type FO-Female	5 Assembly Layout D-DIP	6 Entry Type S-180° Vertical
7 Plating 1-Gold Plated	8 Thickness of Plating 03-3μ" 15-15μ" Custom Plate Available	9 Color-Resin BK-Black	10 Packaging K-Tray	11 Distinction Type A-Type A B-Type B C-Type C D-Type D	



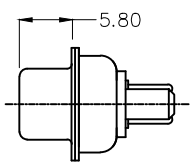
Recommended P.C.Board Layout

 THIRD ANGLE PROJECTION	GENERAL TOLERANCES (UNLESS SPECIFIED) X. ±0.30 X.* ±5" X.X ±0.20 X.X* ±2" X.XX ±0.15 X.XX* ±1" X.XXX ±0.10 X.XXX* ±0.5"		APPROVE BY LEO	DATE 15/JAN/23	PART NO. FDP1317-FODS1XXBKXX	ITEM NO. FDP1317-F	 Building Technology Cornerstone
	DESIGN UNITS METRIC(mm)	SCALE 5:1	SIZE A4	CHECKED BY GISELLE	DATE 15/JAN/23	TITLE Hight current D-SUB connector 13W6 180° Vertical Female	
THIS DRAWING CONTAINS INFORMATION THAT IS PROPRIETARY TO TXGA INDUSTRIAL ELECTRONICS(S.Z)CO.,LTD AND SHOULD NOT BE USED WITHOUT WRITTEN PERMISSION							

REV	LOCATIONS	DESCRIPTION	DATE	REVISER	APPD



Screw (2pcs)

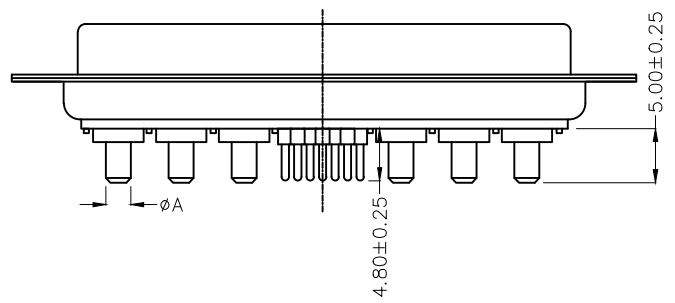
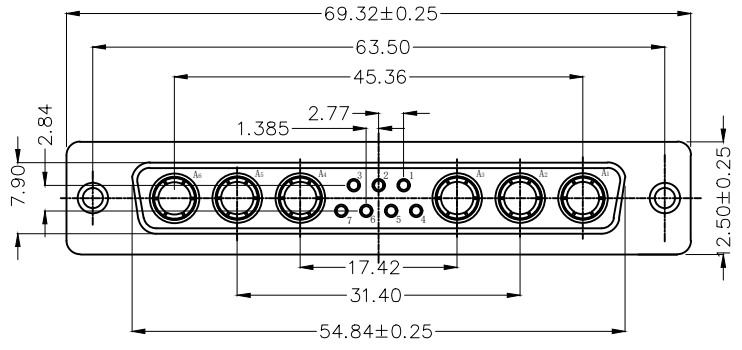


SPECIFICATIONS

Electrical Characteristic
 Current Rating:
 Signal contacts: 7.5A
 Power contacts: 10 to 40A
 Voltage Rating: 300V
 Contact Resistance: 10mΩ Max.
 Insulation Resistance: 5000 MΩ Min.
 Dielectric Withstanding Voltage: 1000V AC r.m.s Min
 Temperature Range-Operating: -55°C ~ +125°C

Material and plating

Shell: Steel, Nickel Plated 80μ" Min
 Back Shell: Steel, Tin Plated 100μ" Min
 Insulator: PBT (UL 94V-0)
 Signal contacts: Brass/ Gold Plated
 Power Contacts: Brass/ Gold Plated
 Screws: Copper alloy/Nickel Plated



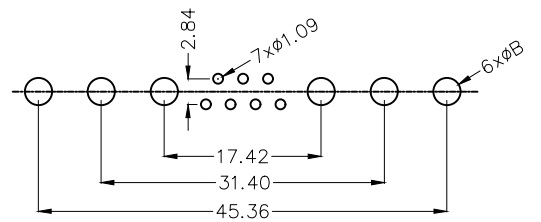
Type	Part NO.	ϕA	PCB. ϕB	Current Rating(A)
A	FDP1317-FODS1XXBKKAA	1.70	2.00	10
B	FDP1317-FODS1XXBKKBA	2.75	3.00	20
C	FDP1317-FODS1XXBKKCA	3.30	3.60	30
D	FDP1317-FODS1XXBKKDA	3.80	4.10	40

Ordering Information

FDP 13 17 — F0 D S 1 XX BK K X A
 1 2 3 4 5 6 7 8 9 10 11 12

1 Category FDP-Hight current D-SUB connector	2 Circuits 13-13W6	3 Distinction No. 17	4 Type F0-Female	5 Assembly Layout D-DIP	6 Entry Type S-180° Vertical
7 Plating 1-Gold Plated	8 Thickness of Plating 03-3μ" 15-15μ" Custom Plate Available	9 Color-Resin BK-Black	10 Packaging K-Tray	11 Distinction Type A-Type A B-Type B C-Type C D-Type D	12 Product Type A-With screw

Recommended P.C.Board Layout



 THIRD ANGLE PROJECTION	GENERAL TOLERANCES (UNLESS SPECIFIED)		APPROVE BY LEO	DATE 15/JAN/23	PART NO. FDP1317-FODS1XXBKKXA	ITEM NO. FDP1317-F	 Building Technology Cornerstone
	X. ±0.30	X.* ±5°	CHECKED BY GISELLE	DATE 15/JAN/23	TITLE Hight current D-SUB connector 13W6 180° Vertical Female		
DESIGN UNITS METRIC(mm)	X.X ±0.20	X.X* ±2°	DRAWN BY NICK	DATE 15/JAN/23	THIS DRAWING CONTAINS INFORMATION THAT IS PROPRIETARY TO TXGA INDUSTRIAL ELECTRONICS(S.Z)CO.,LTD AND SHOULD NOT BE USED WITHOUT WRITTEN PERMISSION		REV 0 SHEET NO. 1/1
SCALE 5:1	SIZE A4	X.XX ±0.15	X.XX* ±1°				
		X.XXX ±0.10	X.XXX* ±0.5°				