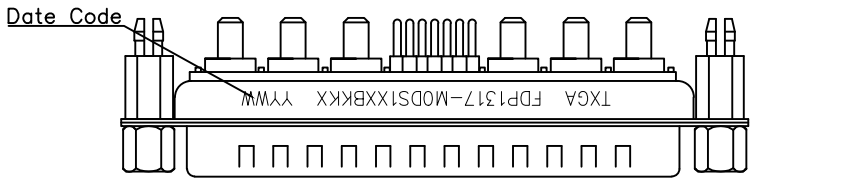
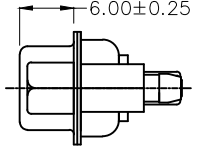
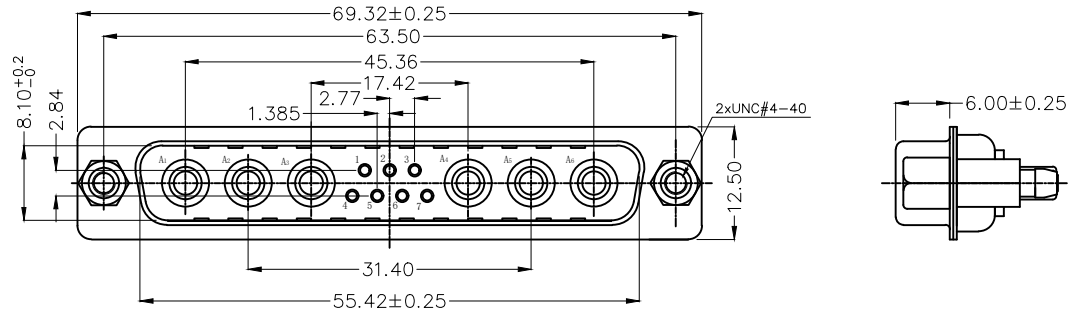


REV	LOCATIONS	DESCRIPTION	DATE	REVISER	APPD

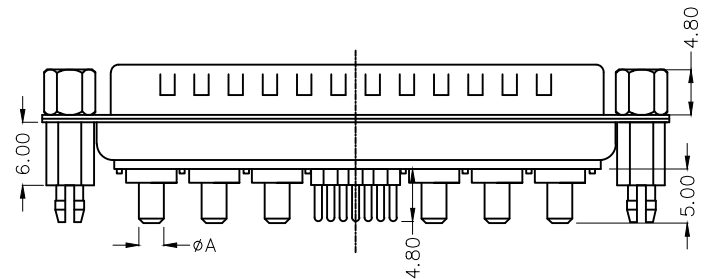
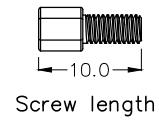


SPECIFICATIONS
 Electrical Characteristic
 Current Rating:
 Signal contacts: 7.5A
 Power contacts: 10 to 40A
 Voltage Rating: 300V
 Contact Resistance: 10mΩ Max.
 Insulation Resistance: 5000 MΩ Min.
 Dielectric Withstanding Voltage: 1000V AC r.m.s Min
 Temperature Range-Operating: -55°C ~ +125°C

Material and plating
 Shell: Steel, Nickel Plated 80μ" Min
 Back Shell: Steel, Tin Plated 100μ" Min
 Insulator: PBT (UL 94V-0)
 Signal contacts: Brass/ Gold Plated
 Power Contacts: Brass/ Gold Plated
 Board Lock: Copper Alloy/ Tin Plated
 Screws: Copper alloy/Nickel Plated



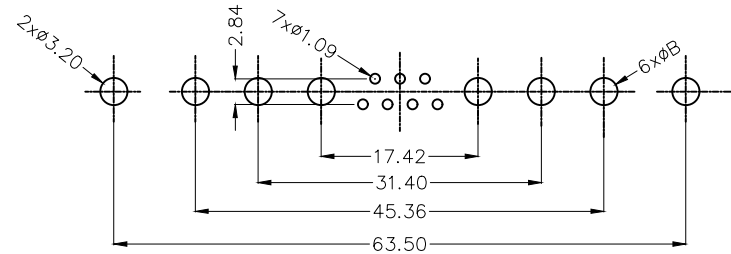
Type	Part NO.	øA	PCB. øB	Current Rating(A)
A	FDP1317-MODS1XXBKKA	1.70	2.00	10
B	FDP1317-MODS1XXBKKB	2.75	3.00	20
C	FDP1317-MODS1XXBKKC	3.30	3.60	30
D	FDP1317-MODS1XXBKKD	3.80	4.10	40



Ordering Information

FDP 13 17 — M0 D S 1 XX BK K X
 1 2 3 4 5 6 7 8 9 10 11

1 Category FDP-Hight current D-SUB connector	2 Circuits 13-13W6	3 Distinction No. 17	4 Type M0-Male	5 Assembly Layout D-DIP	6 Entry Type S-180° Vertical
7 Plating 1-Gold Plated	8 Thickness of Plating 03-3μ" 15-15μ" Custom Plate Available	9 Color-Resin BK-Black	10 Packaging K-Tray	11 Distinction Type A-Type A B-Type B C-Type C D-Type D	



Recommended P.C.Board Layout

 THIRD ANGLE PROJECTION	GENERAL TOLERANCES (UNLESS SPECIFIED) X. ±0.30 X.* ±5' X.X ±0.20 X.X* ±2' X.XX ±0.15 X.XX* ±1' X.XXX ±0.10 X.XXX* ±0.5'		APPROVE BY LEO DATE 15/JAN/23	PART NO. FDP1317-MODS1XXBKXX ITEM NO. FDP1317-M	 Building Technology Cornerstone
	DESIGN UNITS METRIC(mm)	CHECKED BY GISELLE DATE 15/JAN/23	TITLE Hight current D-SUB connector 13W6 180° Vertical Male	REV 0 SHEET NO. 1/1	
SCALE 5:1	SIZE A4	DRAWN BY NICK DATE 15/JAN/23	THIS DRAWING CONTAINS INFORMATION THAT IS PROPRIETARY TO TXGA INDUSTRIAL ELECTRONICS(S.Z)CO.,LTD AND SHOULD NOT BE USED WITHOUT WRITTEN PERMISSION		