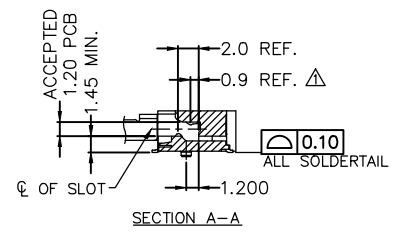
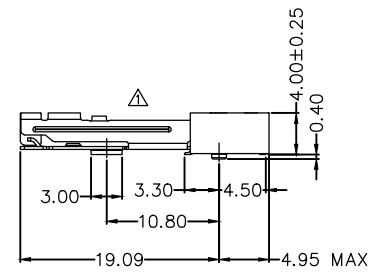
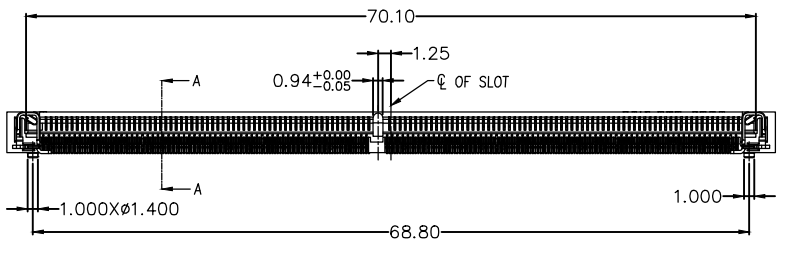
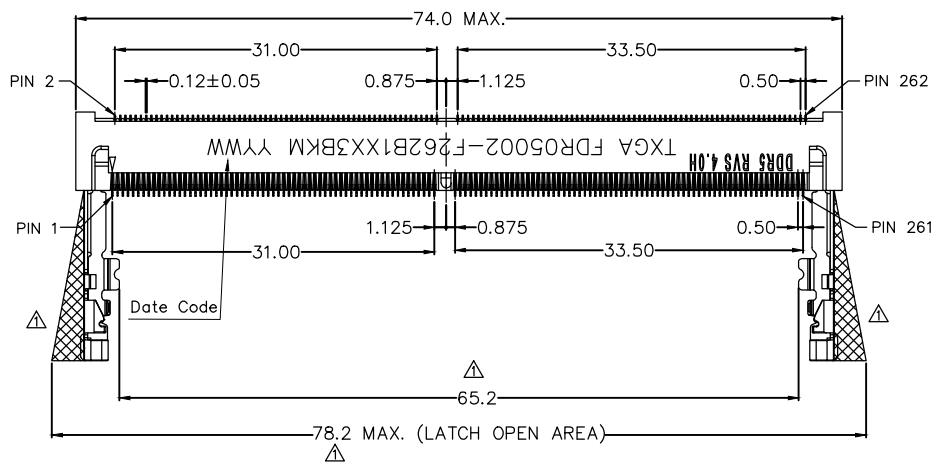


REVERSE ORIENTATION

REV	LOCATIONS	DESCRIPTION	DATE	REVISER	APPD
1	△	Replace the latch	06/Feb/26	Hejianpeng	CHERRY



SPECIFICATION

Electrical  
 Current Rating: 0.5A AC(rms)/DC  
 Voltage Rating: 29V AC(rms)/DC  
 Contact Resistance: 40 mΩ Max  
 Insulation Resistance: 500 MΩ MIN  
 Withstanding Voltage: 250V AC r.m.s  
 Temperature Range-Operating: -40°C~+85°C  
 Material  
 Housing:,LCP WITH 30% GF, (UL 94V-0)  
 LATCH :SUS/100u” Matte-TIN Plating on the Soldering area.  
 Contact: Copper Alloy/Gold Plated

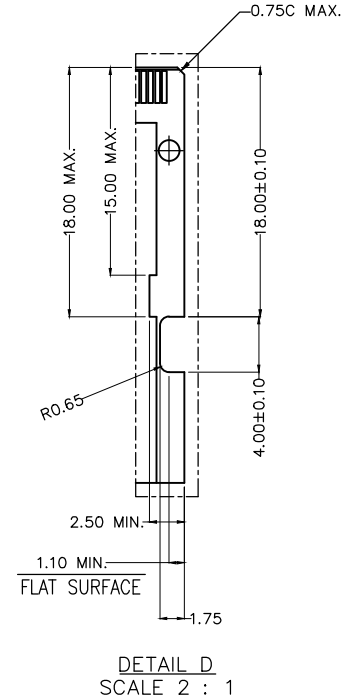
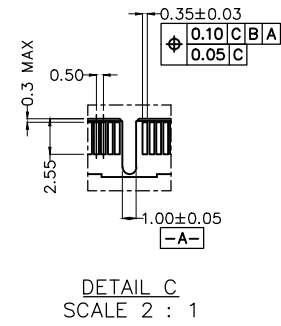
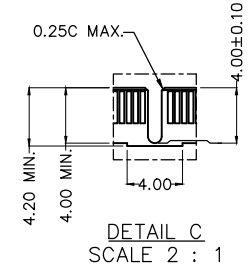
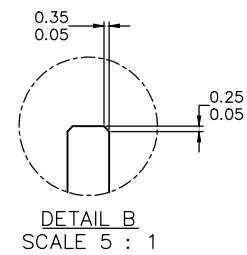
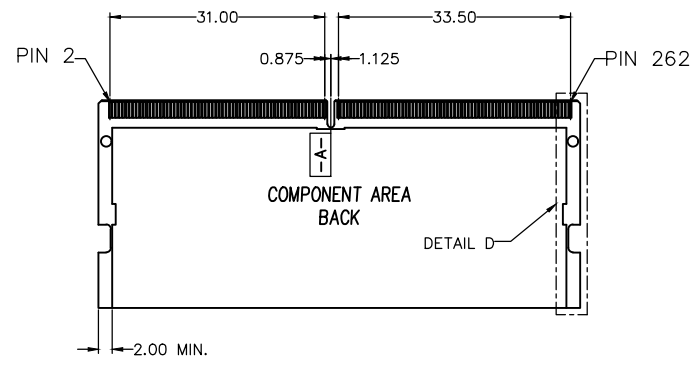
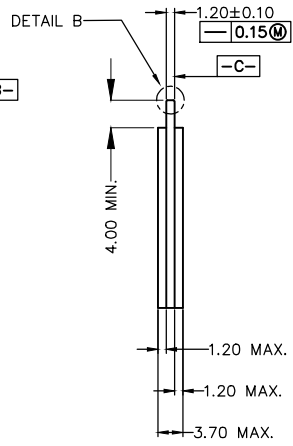
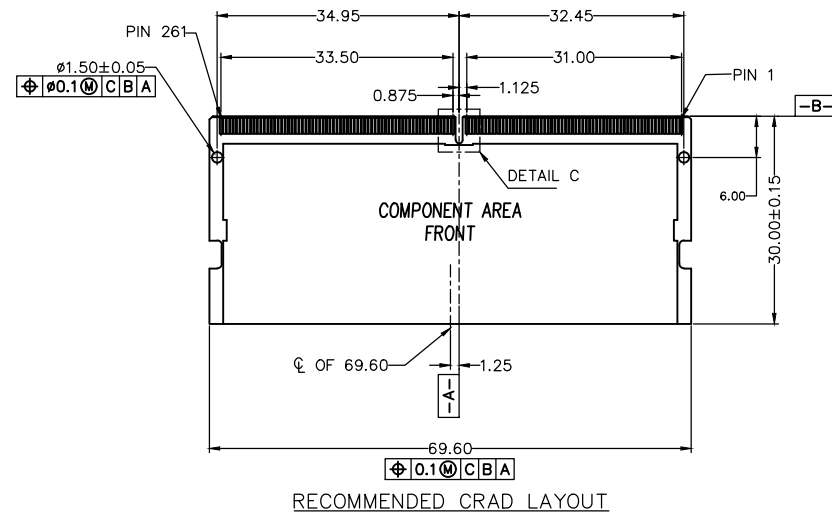
Ordering Information

FDR 050 02 - F 262 B 1 XX 3 BK M  
 1 2 3 4 5 6 7 8 9 10 11

1	Category	2	Series Number	3	Distinction No.	4	Type	5	Circuits	6	Entry Angle
	FDR-DDR Connector		050-Pitch0.50mm		02		F-Female		262		B-90°Angle
7	Plating	8	thickness of Gold Plating	9	Material-Resin	10	Color-Resin	11	Packaging		
	1-Gold Plated		01-1u" 15-15u" 30-30u"		3-LCP		BK-Black		M-Reel		

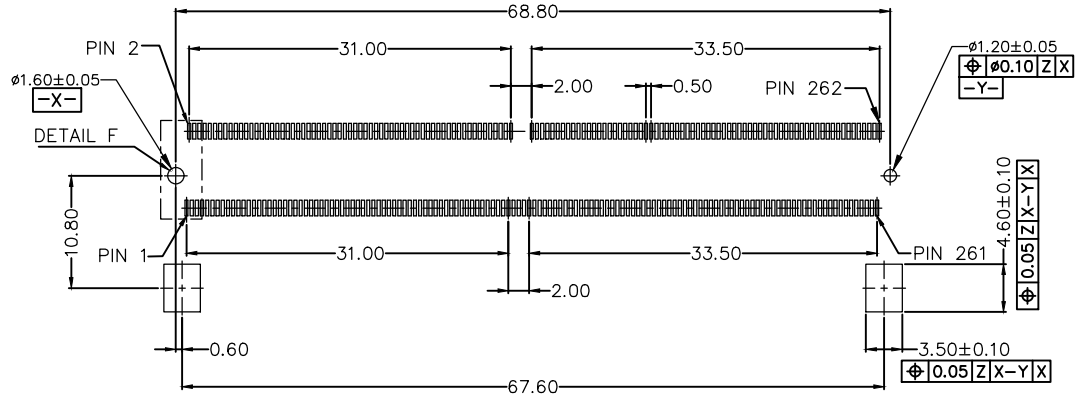
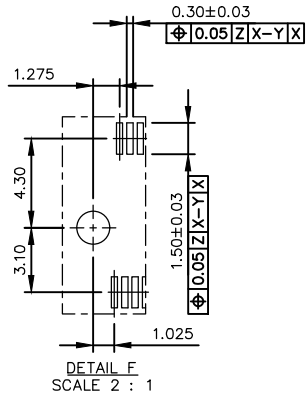
<p>THIRD ANGLE PROJECTION</p>	GENERAL TOLERANCES (UNLESS SPECIFIED)		APPROVE BY	DATE	PART NO.	ITEM NO.	<p>Building Technology Cornerstone</p>
	X. ±0.30	X.* ±5°	LEO	19/Sept/23	FDR05002-F262B1XX3BKM	FDR05002	
DESIGN UNITS METRIC(mm)	X.X ±0.20	X.X* ±2°	CHECKED BY	DATE	TITLE		
SCALE	SIZE	X.XX ±0.15	GISELLE	19/Sept/23	DDR5, 90°Angle 4.0H 262P memory socket SMT Type		REV 1 SHEET NO. 1/4
5:1	A4	X.XXX ±0.10	DRAWN BY	DATE	THIS DRAWING CONTAINS INFORMATION THAT IS PROPRIETARY TO TXGA INDUSTRIAL ELECTRONICS(S.Z)CO.,LTD AND SHOULD NOT BE USED WITHOUT WRITTEN PERMISSION		
		X.XXX* ±0.5°	Hejianpeng	19/Sept/23			

REV	LOCATIONS	DESCRIPTION	DATE	REVISER	APPD

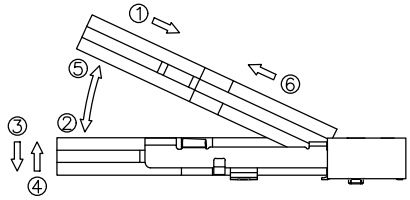


<p>THIRD ANGLE PROJECTION</p>	GENERAL TOLERANCES (UNLESS SPECIFIED)		APPROVE BY LEO	DATE 19/Sept/23	PART NO. FDR05002-F262B1XX3BKM	ITEM NO. FDR05002	<p>Building Technology Cornerstone</p>	
	X. ±0.30	X.' ±5'	CHECKED BY GISELLE	DATE 19/Sept/23	TITLE DDR5, 90°Angle 4.0H 262P memory socket SMT Type			
DESIGN UNITS METRIC(mm)	X.X ±0.20	X.X' ±2'	DRAWN BY Hejianpeng	DATE 19/Sept/23	THIS DRAWING CONTAINS INFORMATION THAT IS PROPRIETARY TO TXGA INDUSTRIAL ELECTRONICS(S.Z)CO.,LTD AND SHOULD NOT BE USED WITHOUT WRITTEN PERMISSION		REV 1	SHEET NO. 2/4
SCALE 5:1	SIZE A4	X.XX ±0.15	X.XX' ±1'					
		X.XXX ±0.10	X.XXX' ±0.5'					

REV	LOCATIONS	DESCRIPTION	DATE	REVISER	APPD



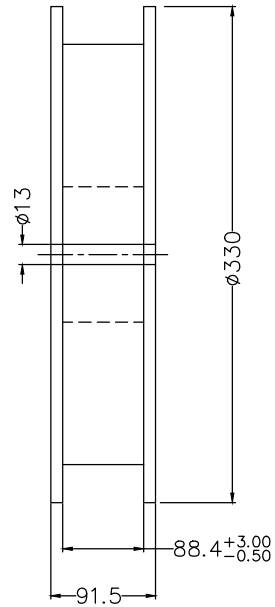
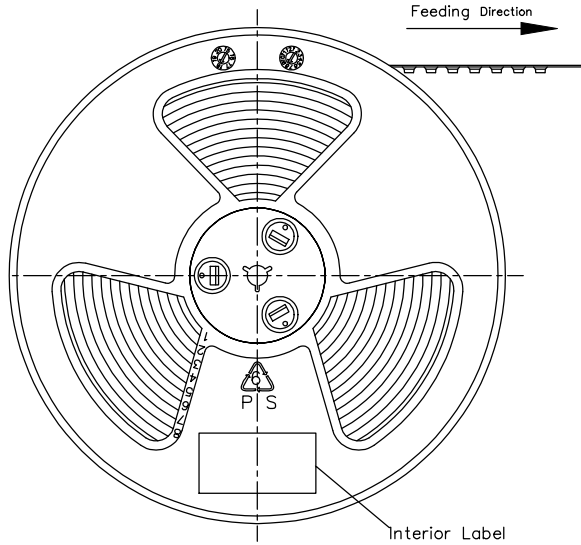
RECOMMENDED PCB LAYOUT  
 REVERSE ORIENTATION  
 (-Z-): PCB SURFACE



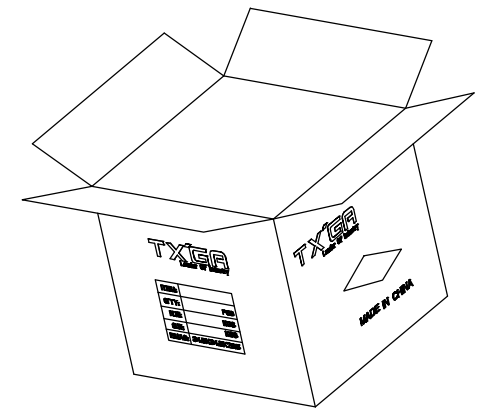
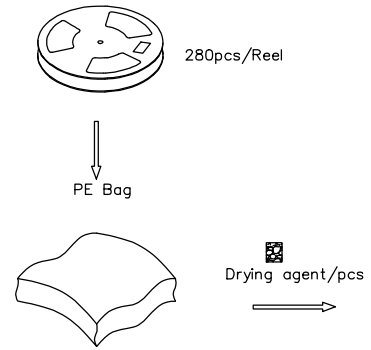
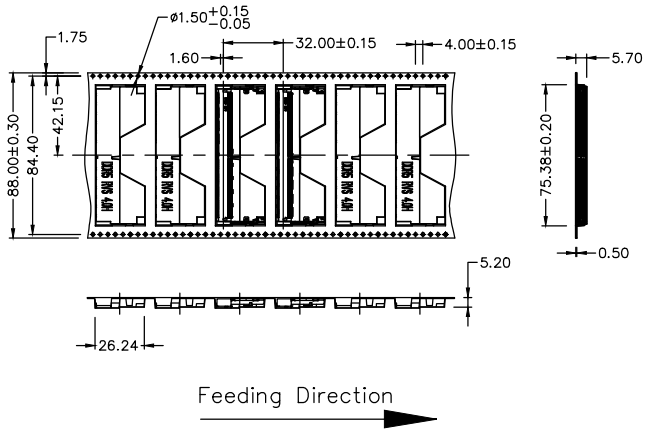
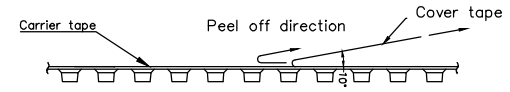
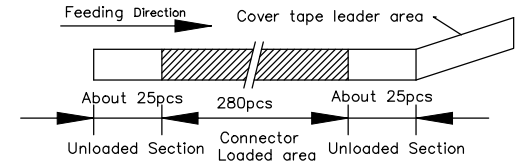
RECOMMENDED OPERATING  
 MATING: ① INSERTING(25°) → ② ROTATING → ③ FIXED  
 UNMATING: ④ UNFIXED ← ⑤ ROTATING ← ⑥ WITHDRAWING

<p>THIRD ANGLE PROJECTION</p>	GENERAL TOLERANCES (UNLESS SPECIFIED)		APPROVE BY LEO	DATE 19/Sept/23	PART NO. FDR05002-F262B1XX3BKM	ITEM NO. FDR05002	<p>Building Technology Cornerstone</p>
	DESIGN UNITS METRIC(mm)	X. ±0.30 X.X ±0.20 X.XX ±0.15 X.XXX ±0.10	X.' ±5' X.X' ±2' X.XX' ±1' X.XXX' ±0.5'	CHECKED BY GISELLE	DATE 19/Sept/23	TITLE DDR5, 90°Angle 4.0H 262P memory socket SMT Type	
SCALE 5:1	SIZE A4	DRAWN BY Hejianpeng		DATE 19/Sept/23	THIS DRAWING CONTAINS INFORMATION THAT IS PROPRIETARY TO TXGA INDUSTRIAL ELECTRONICS(S.Z)CO.,LTD AND SHOULD NOT BE USED WITHOUT WRITTEN PERMISSION		

REV	LOCATIONS	DESCRIPTION	DATE	REVISER	APPD



- Note:
- 1.10 sprocket hole cumulative tolerance  $\pm 0.2$
  2. Carrier camber is within 1.0mm in 250mm
  3. Material: Clear conductive polystyrene Alloy 100% recyclable
  4. All dimensions meet EIA-481-3 requirements
  5. Peel off force of cover tape & carrier tape: 20g~130g (0.2N~1.3N)
  6. Component load per 13" reel: 280 pcs



<p>THIRD ANGLE PROJECTION</p>	<p>GENERAL TOLERANCES (UNLESS SPECIFIED)</p>		<p>APPROVE BY</p> <p>LEO</p>	<p>DATE</p> <p>19/Sept/23</p>	<p>PART NO.</p> <p>FDR05002-F262B1XX3BKM</p>	<p>ITEM NO.</p> <p>FDR05002</p>	<p>Building Technology Cornerstone</p>
	<p>X. <math>\pm 0.30</math></p>	<p>X.' <math>\pm 5^{\circ}</math></p>	<p>CHECKED BY</p> <p>GISELLE</p>	<p>DATE</p> <p>19/Sept/23</p>	<p>TITLE</p> <p>DDR5, 90°Angle 4.0H 262P memory socket SMT Type</p>		
<p>DESIGN UNITS</p> <p>METRIC(mm)</p>	<p>X.X <math>\pm 0.20</math></p>	<p>X.X' <math>\pm 2^{\circ}</math></p>	<p>DRAWN BY</p> <p>Hejianpeng</p>	<p>DATE</p> <p>19/Sept/23</p>	<p>THIS DRAWING CONTAINS INFORMATION THAT IS PROPRIETARY TO TXGA INDUSTRIAL ELECTRONICS(S,Z)CO.,LTD AND SHOULD NOT BE USED WITHOUT WRITTEN PERMISSION</p>		
<p>SCALE</p> <p>1:1</p>	<p>SIZE</p> <p>A4</p>	<p>X.XX <math>\pm 0.15</math></p>	<p>X.XX' <math>\pm 1^{\circ}</math></p>	<p>X.XXX <math>\pm 0.10</math></p>	<p>X.XXX' <math>\pm 0.5^{\circ}</math></p>	<p>SHEET NO. 4/4</p>	