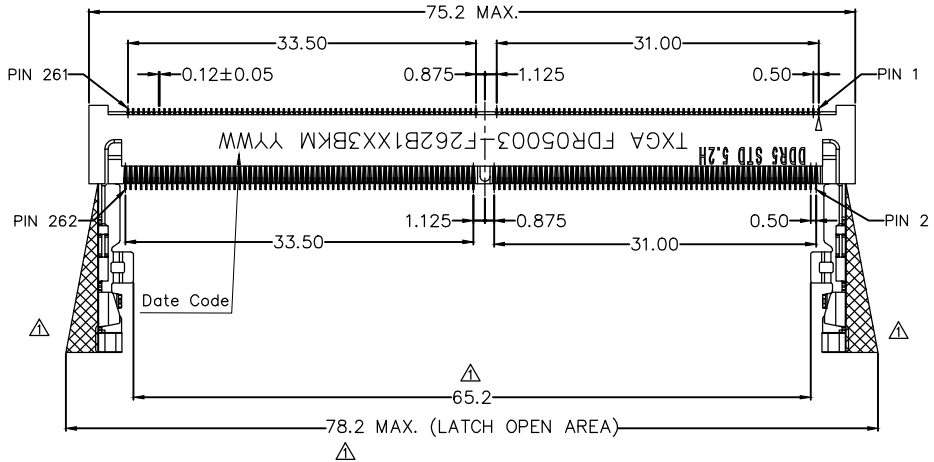


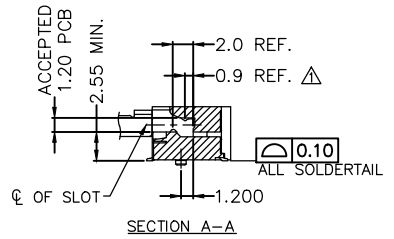
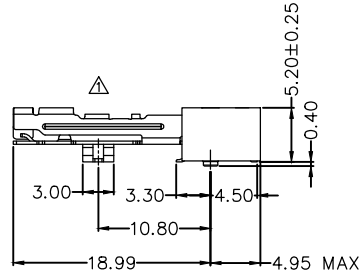
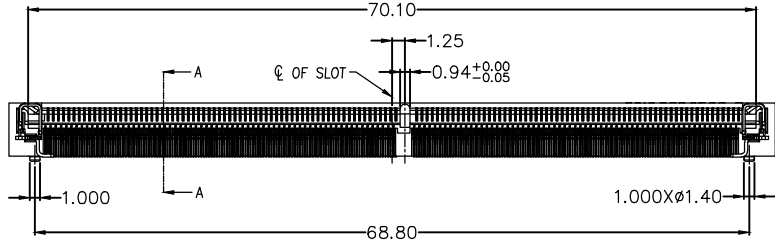
STANDARD ORIENTATION

REV	LOCATIONS	DESCRIPTION	DATE	REVISER	APPD
1	△	Replace the latch	06/Feb/26	Hejianpeng	CHERRY



SPECIFICATION

Electrical  
 Current Rating: 0.5A AC(rms)/DC  
 Voltage Rating: 29V AC(rms)/DC  
 Contact Resistance: 40 mΩ Max  
 Insulation Resistance: 500 MΩ MIN  
 Withstanding Voltage: 250V AC r.m.s  
 Temperature Range-Operating: -40°C~+85°C  
 Material  
 Housing:,LCP WITH 30% GF, (UL 94V-0)  
 LATCH :SUS/100u” Matte-TIN Plating on the Soldering area.  
 Contact: Copper Alloy/Gold Plated



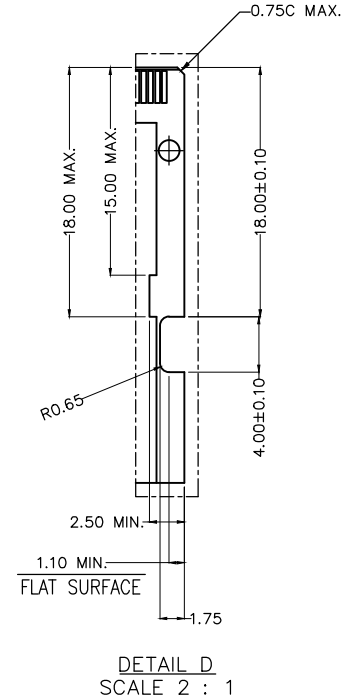
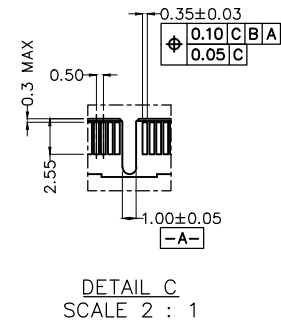
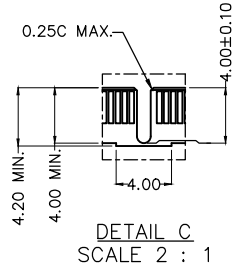
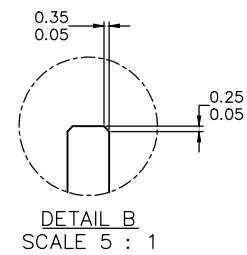
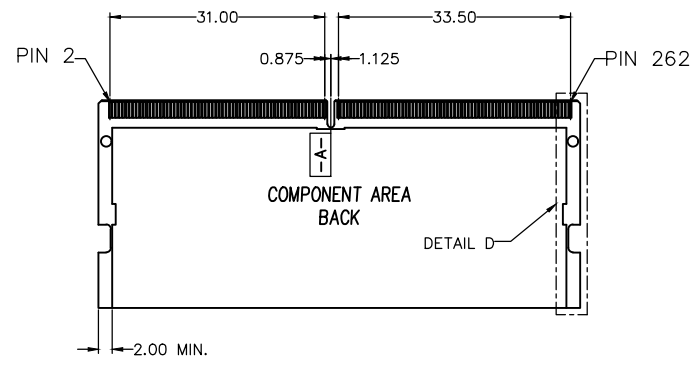
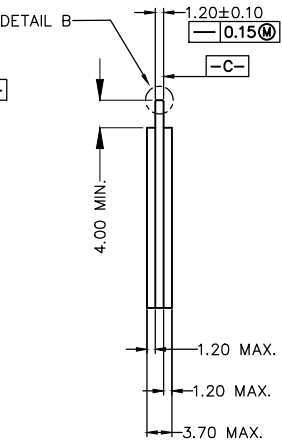
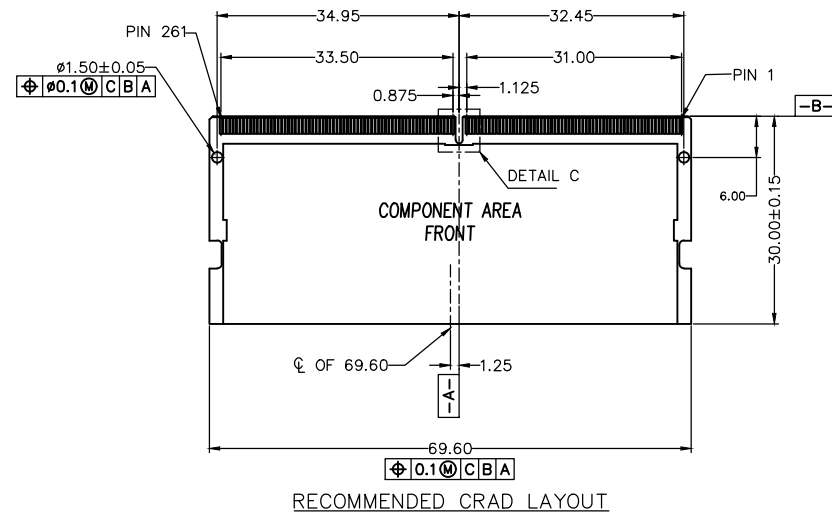
Ordering Information

FDR 050 03 — F 262 B 1 XX 3 BK M  
 1 2 3 4 5 6 7 8 9 10 11

1	Category FDR-DDR Connector	2	Series Number 050-Pitch0.50mm	3	Distinction No. 03	4	Type F-Female	5	Circuits 262	6	Entry Angle B-90°Angle
7	Plating 1-Gold Plated	8	thickness of Gold Plating 01-1u" 15-15u" 30-30u"	9	Material-Resin 3-LCP	10	Color-Resin BK-Black	11	Packaging M-Reel		

<p>THIRD ANGLE PROJECTION</p>	GENERAL TOLERANCES (UNLESS SPECIFIED)		APPROVE BY LEO	DATE 19/Sept/23	PART NO. FDR05003-F262B1XX3BKM	ITEM NO. FDR05003	<p>Building Technology Cornerstone</p>	
	X. ±0.30	X.* ±5*	CHECKED BY GISELLE	DATE 19/Sept/23	TITLE DDR5, 90°Angle 5.2H 262P memory socket SMT Type			
DESIGN UNITS METRIC(mm)	X.X ±0.20	X.X* ±2*	DRAWN BY Hejianpeng	DATE 19/Sept/23	THIS DRAWING CONTAINS INFORMATION THAT IS PROPRIETARY TO TXGA INDUSTRIAL ELECTRONICS(S,Z)CO.,LTD AND SHOULD NOT BE USED WITHOUT WRITTEN PERMISSION		REV 1	SHEET NO. 1/4
SCALE 5:1	SIZE A4	X.XX ±0.15	X.XX* ±1*					
		X.XXX ±0.10	X.XXX* ±0.5*					

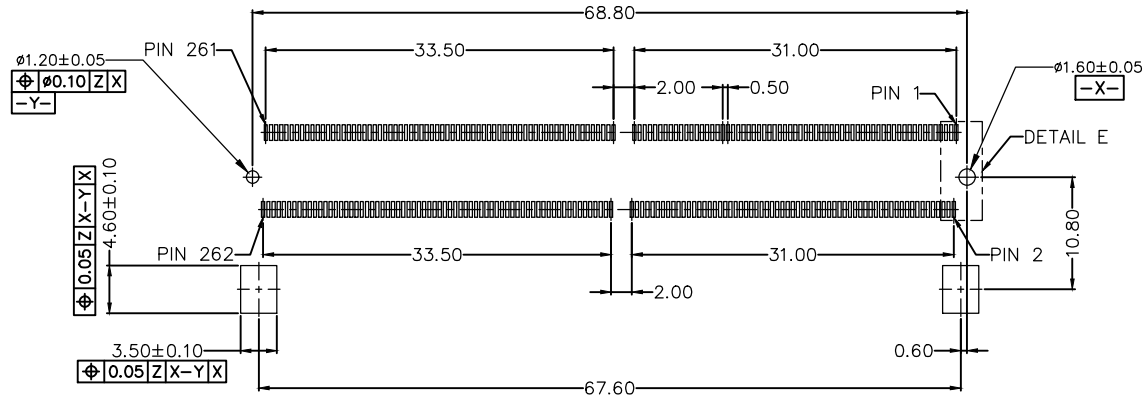
REV	LOCATIONS	DESCRIPTION	DATE	REVISER	APPD



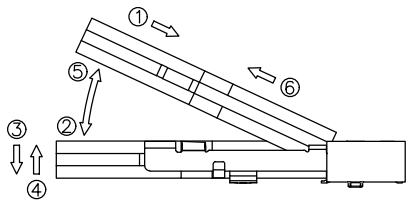
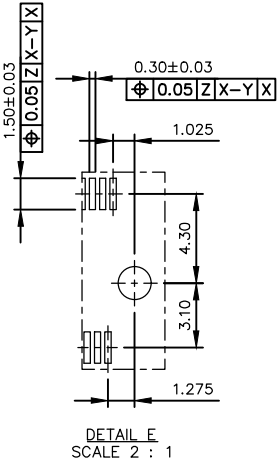
 THIRD ANGLE PROJECTION	GENERAL TOLERANCES (UNLESS SPECIFIED)		APPROVE BY LEO	DATE 19/Sept/23	PART NO. FDR05003-F262B1XX3BKM	ITEM NO. FDR05003	 Building Technology Cornerstone	
	X. ±0.30	X.' ±5'	CHECKED BY GISELLE	DATE 19/Sept/23	TITLE DDR5, 90°Angle 5.2H 262P memory socket SMT Type			
DESIGN UNITS METRIC(mm)	X.X ±0.20	X.X' ±2'	DRAWN BY Hejianpeng	DATE 19/Sept/23	THIS DRAWING CONTAINS INFORMATION THAT IS PROPRIETARY TO TXGA INDUSTRIAL ELECTRONICS(S.Z)CO.,LTD AND SHOULD NOT BE USED WITHOUT WRITTEN PERMISSION		REV 1	SHEET NO. 2/4
SCALE 5:1	SIZE A4	X.XX ±0.15	X.XX' ±1'					
		X.XXX ±0.10	X.XXX' ±0.5'					

1 2 3 4 5 6 7 8

REV	LOCATIONS	DESCRIPTION	DATE	REVISER	APPD



RECOMMENDED PCB LAYOUT  
STANDARD ORIENTATION  
(-Z-: PCB SURFACE)

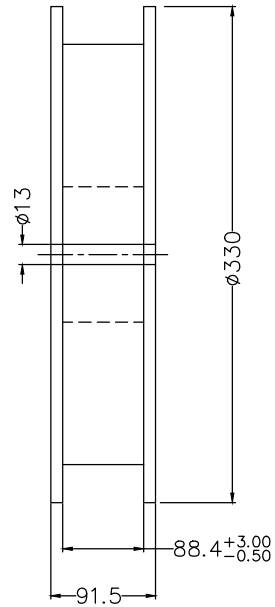
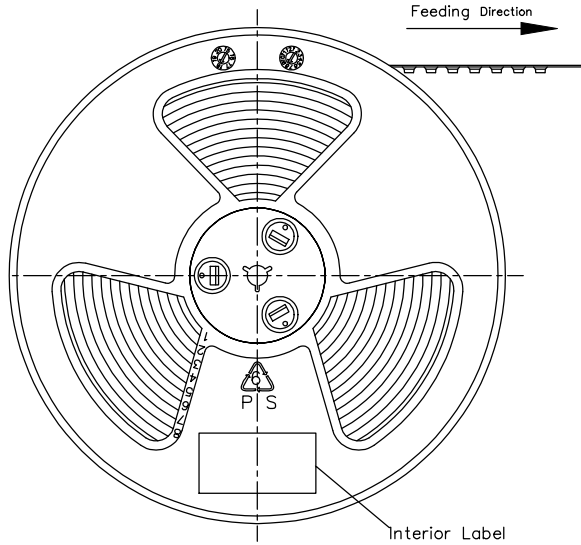


RECOMMENDED OPERATING  
MATING: ① INSERTING(25°) → ② ROTATING → ③ FIXED  
UNMATING: ④ UNFIXED → ⑤ ROTATING → ⑥ WITHDRAWING

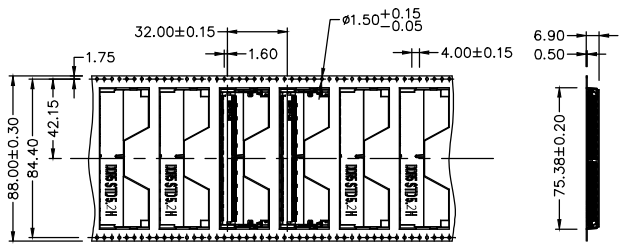
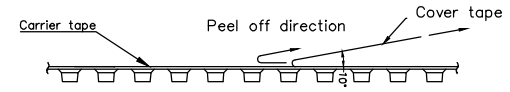
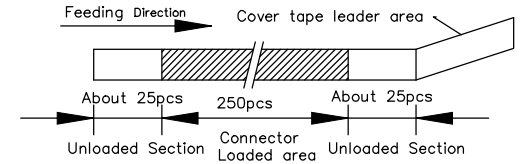
<p>THIRD ANGLE PROJECTION</p>	<p>GENERAL TOLERANCES (UNLESS SPECIFIED)</p>		<p>APPROVE BY LEO</p>	<p>DATE 19/Sept/23</p>	<p>PART NO. FDR05003-F262B1XX3BKM</p>	<p>ITEM NO. FDR05003</p>	<p>Building Technology Cornerstone</p>
	<p>DESIGN UNITS METRIC(mm)</p>	<p>X. ±0.30</p>	<p>X.* ±5°</p>	<p>CHECKED BY GISELLE</p>	<p>DATE 19/Sept/23</p>	<p>TITLE DDR5, 90°Angle 5.2H 262P memory socket SMT Type</p>	
<p>SCALE 5:1</p>	<p>SIZE A4</p>	<p>X.XX ±0.15</p>	<p>X.XX* ±1°</p>	<p>DRAWN BY Hejianpeng</p>	<p>DATE 19/Sept/23</p>	<p>THIS DRAWING CONTAINS INFORMATION THAT IS PROPRIETARY TO TXGA INDUSTRIAL ELECTRONICS(S,Z)CO.,LTD AND SHOULD NOT BE USED WITHOUT WRITTEN PERMISSION</p>	
						<p>REV 1</p>	<p>SHEET NO. 3/4</p>

1 2 3 4 5 6 7 8

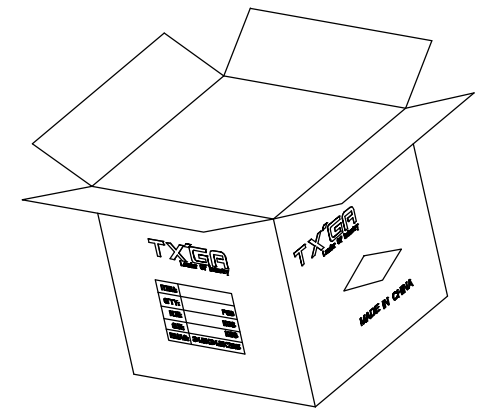
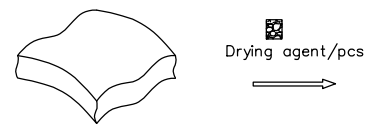
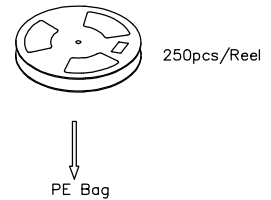
REV	LOCATIONS	DESCRIPTION	DATE	REVISER	APPD



- Note:
- 1.10 sprocket hole cumulative tolerance  $\pm 0.2$
  2. Carrier camber is within 1.0mm in 250mm
  3. Material: Clear conductive polystyrene Alloy 100% recyclable
  4. All dimensions meet EIA-481-3 requirements
  5. Peel off force of cover tape & carrier tape: 20g~130g (0.2N~1.3N)
  6. Component load per 13" reel: 250 pcs



Feeding Direction →



<p>THIRD ANGLE PROJECTION</p>	GENERAL TOLERANCES (UNLESS SPECIFIED)		APPROVE BY LEO	DATE 19/Sept/23	PART NO. FDR05003-F262B1XX3BKM	ITEM NO. FDR05003	<p>Building Technology Cornerstone</p>	
	X. ±0.30	X.* ±5°	CHECKED BY GISELLE	DATE 19/Sept/23	TITLE DDR5, 90°Angle 5.2H 262P memory socket SMT Type			REV 1 SHEET NO. 4/4
	DESIGN UNITS METRIC(mm)	X.X ±0.20	X.X* ±2°	DRAWN BY Hejianpeng	DATE 19/Sept/23	THIS DRAWING CONTAINS INFORMATION THAT IS PROPRIETARY TO TXGA INDUSTRIAL ELECTRONICS(S,Z)CO.,LTD AND SHOULD NOT BE USED WITHOUT WRITTEN PERMISSION		
	SCALE 1:1	SIZE A4	X.XX ±0.15	X.XX* ±1°	X.XXX ±0.10	X.XXX* ±0.5°		