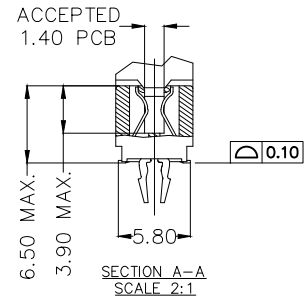
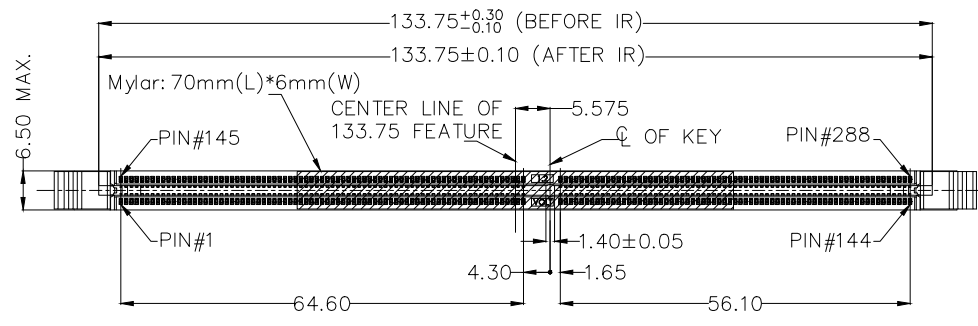


REV	LOCATIONS	DESCRIPTION	DATE	REVISER	APPD

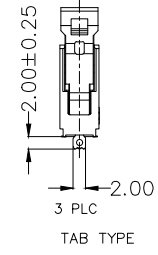
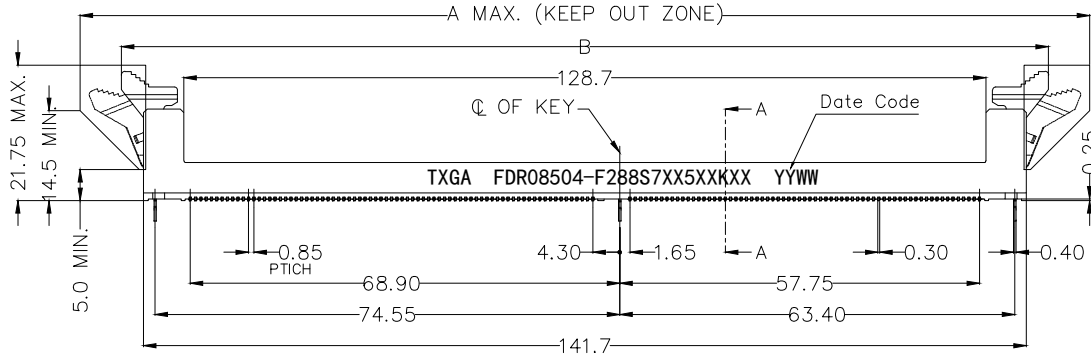


**SPECIFICATION**  
Electrical

Current Rating: 0.75A AC(rms)/DC  
Voltage Rating: 25V AC(rms)/DC  
Contact Resistance: 20 mΩ Max  
Insulation Resistance: 500 MΩ MIN  
Withstanding Voltage: 500V AC r.m.s  
Temperature Range-Operating: -55°C~+105°C

**Material**

Housing: PA9T, (UL 94V-0)  
LATCH : PA9T, (UL 94V-0)  
Contact: Copper Alloy/Selective gold plated on contact area and matte tin plated on tails area  
Boardlocks : SUS



**Ordering Information**

FDR 085 04 - F 288 S 7 XX 5 XX K X X  
1 2 3 4 5 6 7 8 9 10 11 12 13

LATCH TYPE	Dimensions	
	A	B
LONG	162.0	148.8
MIDDLE	156.0	144.2
SHORT	152.0	142.3

- 1 Category: FDR-DDR Connector
- 2 Series Number: 085-Pitch0.85mm
- 3 Distinction No.: 04
- 4 Type: F-Female
- 5 Circuits: 288
- 6 Entry Angle: S-180° Vertical
- 7 Plating: 7-Selective gold plated on contact area and matte tin plated on tails area
- 8 thickness of Gold Plating: 00-Gold Flash, 15-15u", 30-30u"
- 9 Material-Resin: 5-PA9T
- 10 Color-Resin: BK-Black HSG,Black Latch, NA-Natural HSG,Natural Latch, JA-Blue HSG,Natural Latch, YA-Yellow HSG,Natural Latch
- 11 Packaging: K-Tray
- 12 LATCH Type: 1-LONG, 2-MIDDLE, 3-SHORT
- 13 Type: 1-Boardlock, 2-Tab

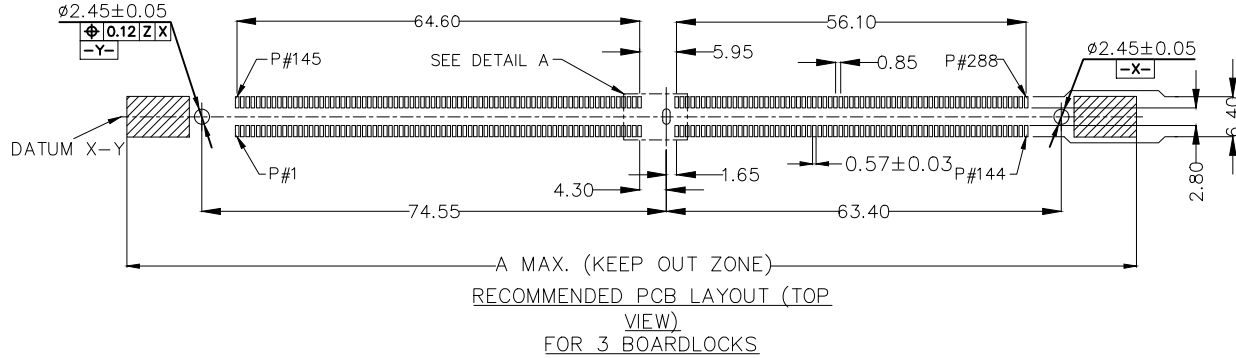
<p>THIRD ANGLE PROJECTION</p>	<b>GENERAL TOLERANCES (UNLESS SPECIFIED)</b> X. ±0.30 X.' ±5" X.X ±0.20 X.X' ±2" X.XX ±0.15 X.XX' ±1" X.XXX ±0.10 X.XXX' ±0.5"		<b>APPROVE BY</b> LEO	<b>DATE</b> 19/Sept/23	<b>PART NO.</b> FDR08504-F288S7XX5XXKXX	<b>ITEM NO.</b> FDR08504	<p><b>TXGA</b> Building Technology Cornerstone</p>
	<b>DESIGN UNITS METRIC(mm)</b>	<b>CHECKED BY</b> GISELLE	<b>DATE</b> 19/Sept/23	<b>TITLE</b> DDR4, 180°vertical 288P memory socket SMT Type	<b>REV 0</b>	<b>SHEET NO. 1/3</b>	
<b>SCALE</b> 5:1	<b>SIZE</b> A4	<b>DRAWN BY</b> Hejianpeng	<b>DATE</b> 19/Sept/23	<b>THIS DRAWING CONTAINS INFORMATION THAT IS PROPRIETARY TO TXGA INDUSTRIAL ELECTRONICS(S.Z)CO.,LTD AND SHOULD NOT BE USED WITHOUT WRITTEN PERMISSION</b>			

1 2 3 4 5 6 7 8

REV	LOCATIONS	DESCRIPTION	DATE	REVISER	APPD

A

A

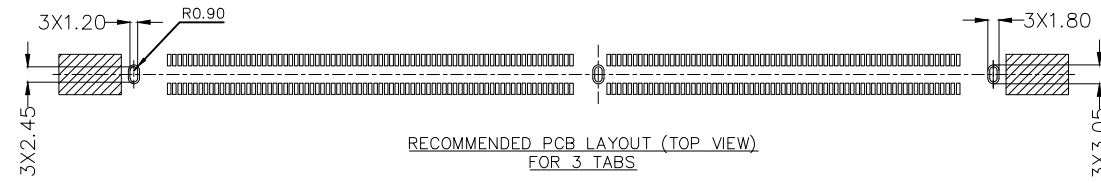


B

B

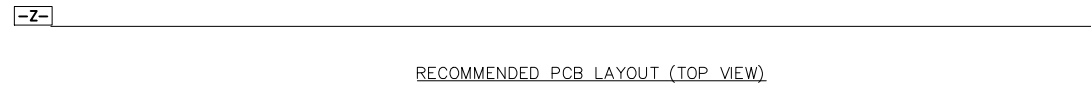
C

C



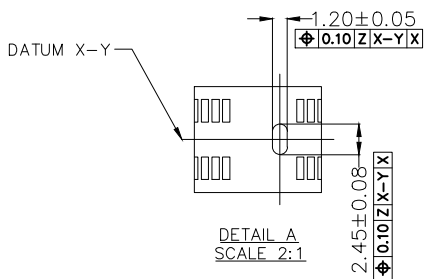
D

D



E

E



F

F

<p>THIRD ANGLE PROJECTION</p>	<p>GENERAL TOLERANCES (UNLESS SPECIFIED)</p>		<p>APPROVE BY</p> <p>LEO</p>	<p>DATE</p> <p>19/Sept/23</p>	<p>PART NO.</p> <p>FDR08504-F288S7XX5XXKXX</p>	<p>ITEM NO.</p> <p>FDR08504</p>	<p>Building Technology Cornerstone</p>
	<p>X. ±0.30</p>	<p>X.' ±5'</p>	<p>CHECKED BY</p> <p>GISELLE</p>	<p>DATE</p> <p>19/Sept/23</p>	<p>TITLE</p> <p>DDR4, 180°vertical 288P memory socket SMT Type</p>		
<p>DESIGN UNITS</p> <p>METRIC(mm)</p>	<p>X.X ±0.20</p>	<p>X.X' ±2'</p>	<p>DRAWN BY</p> <p>Hejianpeng</p>	<p>DATE</p> <p>19/Sept/23</p>	<p>THIS DRAWING CONTAINS INFORMATION THAT IS PROPRIETARY TO TXGA INDUSTRIAL ELECTRONICS(S.Z)CO.,LTD AND SHOULD NOT BE USED WITHOUT WRITTEN PERMISSION</p>		
<p>SCALE</p> <p>5:1</p>	<p>SIZE</p> <p>A4</p>	<p>X.XX ±0.15</p>	<p>X.XX' ±1'</p>	<p>X.XXX ±0.10</p>	<p>X.XXX' ±0.5'</p>	<p>SHEET NO. 2/3</p>	

1 2 3 4 5 6 7 8

1 2 3 4 5 6 7 8

REV	LOCATIONS	DESCRIPTION	DATE	REVISER	APPD

A

B

C

D

E

F

A

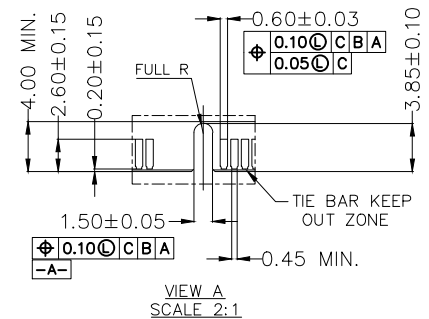
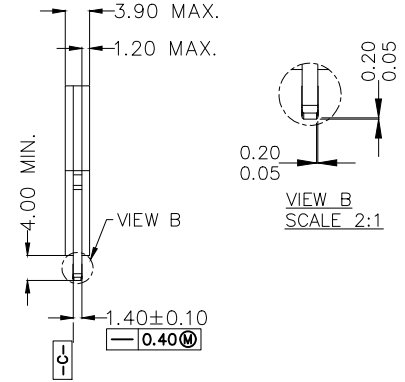
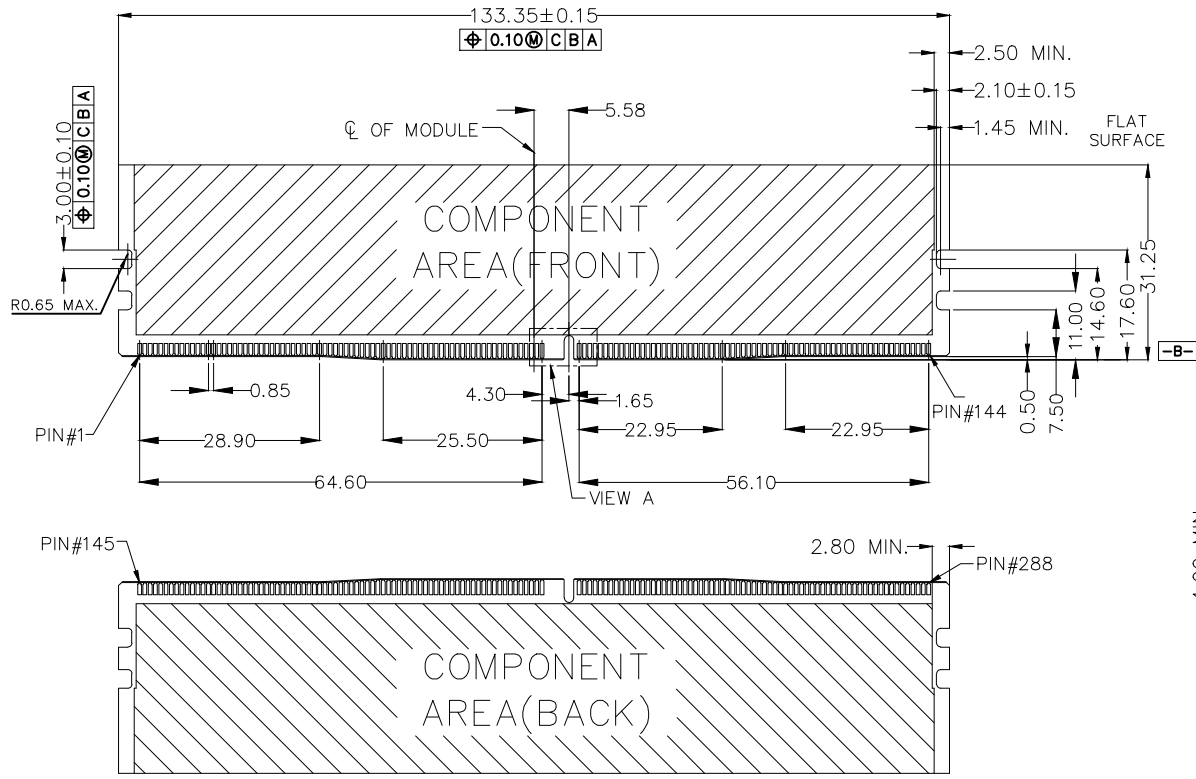
B

C

D

E

F



 THIRD ANGLE PROJECTION	GENERAL TOLERANCES (UNLESS SPECIFIED)		APPROVE BY	DATE	PART NO.	ITEM NO.	 Building Technology Cornerstone	
	X. ±0.30	X.' ±5°	LEO	19/Sept/23	FDR08504-F288S7XX5XXKXX	FDR08504		
	DESIGN UNITS METRIC (mm)	X.X ±0.20	X.X' ±2°	CHECKED BY	DATE	TITLE		
	SCALE 5:1	X.XX ±0.15	X.XX' ±1°	GISELLE	19/Sept/23	DDR4, 180°vertical 288P memory socket SMT Type		
SIZE A4	X.XXX ±0.10	X.XXX' ±0.5°	DRAWN BY	DATE	THIS DRAWING CONTAINS INFORMATION THAT IS PROPRIETARY TO TXGA INDUSTRIAL ELECTRONICS(S,Z)CO.,LTD AND SHOULD NOT BE USED WITHOUT WRITTEN PERMISSION		REV 0	SHEET NO. 3/3
			Hejianpeng	19/Sept/23				

1 2 3 4 5 6 7 8