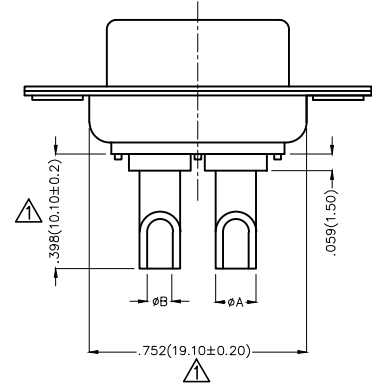
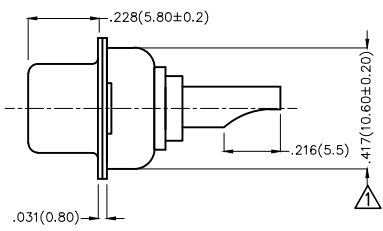
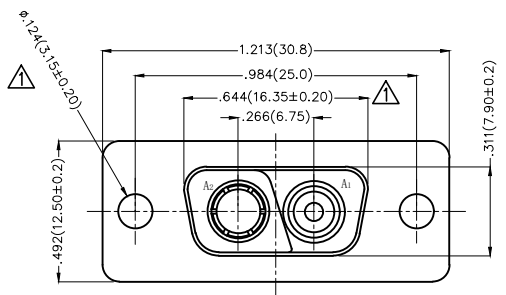
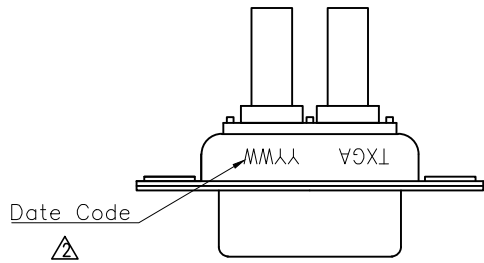


REV	LOCATIONS	DESCRIPTION	DATE	REVISER	APPD
1	△	Size change	21/MAR/22	MATT	KATE
2	△	Add marking code	3/MAR/26	NICK	LEO



- Electrical Characteristic
 - Current Rating
 - Power Contacts: 10 to 40A
 - Voltage Rating: 500V
 - Contact Resistance: 30 Milliohms Max
 - Insulation Resistance: 3000 Megaohms Min.
 - Dielectric Withstanding Voltage : 1000V AC r.m.s Min
- Materials And Finish
 - Shell: Steel Material, Front Nickel Plated 80u" Min
Back Shell Tin Plated 100u" Min
 - Insulator: Glass Filled Thermoplastic, UL 94V-0 , Colour: Black
 - Power Contacts: Copper alloy /Gold Plated 1u"~30u"
- Temperature Range-Operating: -55°C ~ +105°C

Type	Part NO.	A △	B △	Wire	Current Rating(A)
A	FDV0201-FOWS1XXK6KA	ø.102(2.60)	.071(1.80)	14#~16#	10
B	FDV0201-FOWS1XXK6KB	ø.142(3.60)	.110(2.80)	10#~12#	20
C	FDV0201-FOWS1XXK6KC	ø.177(4.50)	.138(3.50)	8#~10#	30
D	FDV0201-FOWS1XXK6KD	ø.213(5.40)	.181(4.60)	6#~8#	40

Ordering Information

FDV 02 01 - FO W S 1 XX K6 K X
 1 2 3 4 5 6 7 8 9 10 11

1 D-sub Connector Series Name FDV-Power Type	2 Circuits 02-2V2	3 Distinction No. 01	4 Type FO-Female	5 Assembly Layout W-Welding Type	6 Entry Type S-Top entry type
7 Plating 1-Gold Flash	8 Thickness of Plating 01-01u" 03-3u" 15-15u" 30-30u"	9 Plastic Colour K6-Black	10 Packaging K-Tray	11 Type A-Type A C-Type C B-Type B D-Type D	

 THIRD ANGLE PROJECTION	GENERAL TOLERANCES (UNLESS SPECIFIED)		APPROVE BY FRANK	DATE 19/JUL/13	PART NO. FDV0201-FOWS1XXK6KX	ITEM NO. FDV0201-F	 Leader Of Industry
	DESIGN UNITS Inch (metric)	X.±.012(0.30)	X.±5'	CHECKED BY CHERRY	DATE 19/JUL/13	TITLE POWER MACHINED CONTACT FEMALE 2V2 CONN	
SCALE 5:1	SIZE A4	X.XX±.008(0.20)	.X'±2'	DRAWN BY JACOB	DATE 19/JUL/13	THIS DRAWING CONTAINS INFORMATION THAT IS PROPRIETARY TO TXGA INDUSTRIAL ELECTRONICS(S.2)CO.,LTD AND SHOULD NOT BE USED WITHOUT WRITTEN PERMISSION	
		X.XX±.006(0.15)	.XX'±1'			REV 2	SHEET NO. 1/1
		X.XXX±.004(0.10)	.XXX'±0.5'				