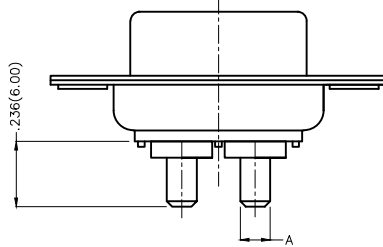
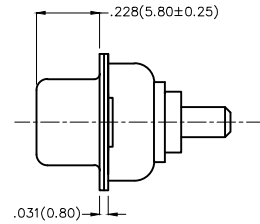
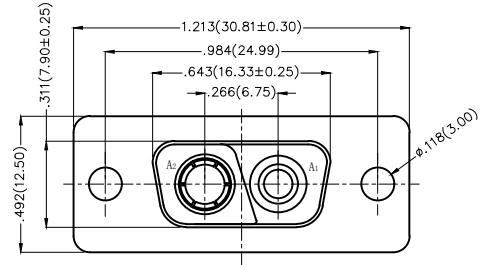


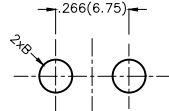
REV	LOCATIONS	DESCRIPTION	DATE	REVISER	APPD

- 1. Electrical Characteristic
  - 1.1 Current Rating
    - Power Contacts: 10 to 40A
  - 1.2 Voltage Rating: 300V
  - 1.3 Contact Resistance: 5 Milliohms Max
  - 1.4 Insulation Resistance: 5000 Megaohms Min.
  - 1.5 Dielectric Withstanding Voltage : 1000V AC r.m.s Min

- 2. Materials And Finish
  - 2.1 Shell: Steel Material, Front Nickel Plated 80u" Min  
Back Shell Tin Plated 100u" Min
  - 2.2 Insulator: Glass Filled Thermoplastic, UL 94V-0 , Colour: Black
  - 2.3 Power Contacts: Bronze /Gold Plated 3u~30u"
- 3. Temperature Range-Operating: -55°C ~ +105°C



Type	Part NO.	øA	PCB. øB	Current Rating(A)
A	FDV0205-FODS1XXK6KA	.067(1.70)	.079(2.00)	10
B	FDV0205-FODS1XXK6KB	.108(2.75)	.118(3.00)	20
C	FDV0205-FODS1XXK6KC	.130(3.30)	.142(3.60)	30
D	FDV0205-FODS1XXK6KD	.150(3.80)	.161(4.10)	40




Recommended P.C.Board Layout

Ordering Information

FDV 02 05 - F0 D S 1 XX K6 K X  
 1 2 3 4 5 6 7 8 9 10 11

1   D-sub Connector Series Name FDV-Power Type	2   Circuits 02-2V2	3   Distinction No. 05	4   Type FO-Female	5   Assembly Layout D-DIP	6   Entry Type S-Top entry type
7   Plating 1-Gold Flash	8   Thickness of Plating 03-3u" 15-15u" 30-30u" .....	9   Plastic Colour K6-Black	10   Packaging K-Tray	11   Type A-Type A C-Type C B-Type B D-Type D	

THIRD ANGLE PROJECTION	GENERAL TOLERANCES (UNLESS SPECIFIED)		APPROVE BY FRANK	DATE 19/JUL/13	PART NO. FDV0205-FODS1XXK6KX	ITEM NO. FDV0205-F	 Leader Of Industry	
	DESIGN UNITS Inch (metric)	X.±.012(0.30) X.X±.008(0.20)	X.±5' .X±2'	CHECKED BY CHERRY	DATE 19/JUL/13	TITLE POWER MACHINED CONTACT FEMALE 2V2 CONN		REV 0
SCALE 5:1	SIZE A4	X.XX±.006(0.15) X.XXX±.004(0.10)	.XX±1' .XX±0.5'	DRAWN BY JACOB	DATE 19/JUL/13	THIS DRAWING CONTAINS INFORMATION THAT IS PROPRIETARY TO TXGA INDUSTRIAL ELECTRONICS(S.Z)CO.,LTD AND SHOULD NOT BE USED WITHOUT WRITTEN PERMISSION		