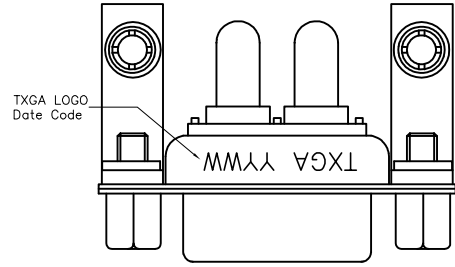


REV	LOCATIONS	DESCRIPTION	DATE	REVISER	APPD



SPECIFICATIONS

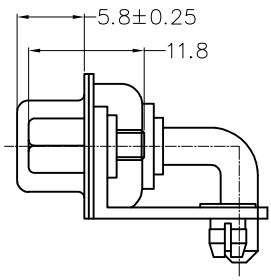
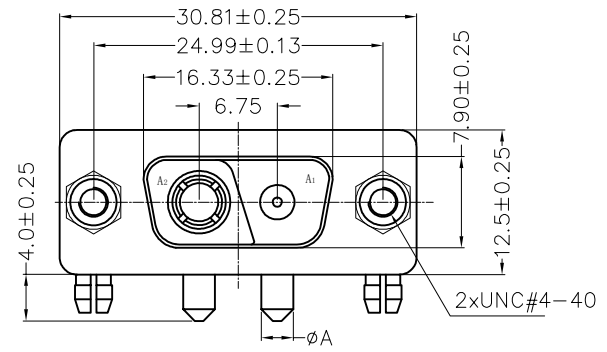
Electrical

Current Rating: 10 to 40A AC(rms)/DC
 Voltage Rating: 300V AC(rms)/DC
 Contact Resistance: 5 mΩ Max
 Insulation Resistance: 5000 MΩ Min
 Withstanding Voltage: 1000V AC r.m.s
 Temperature Range—Operating: -55°C~+105°C

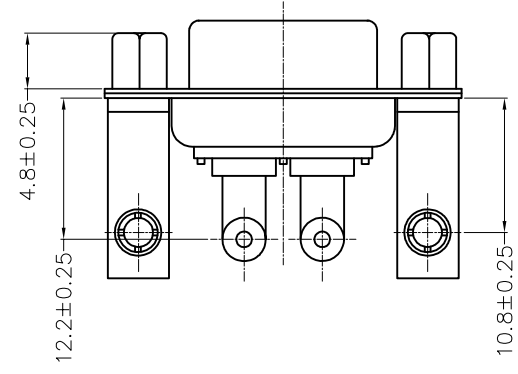
Material and plating

Housing: PBT+30%GF UL 94V-0
 Contact: Copper Alloy/Gold Plated
 Shell: SPCC/ Front Nickel Plated; Back Tin Plated
 Bracket: Brass/Nickel Plated
 Screw: Brass/Nickel Plated

*Date Code: YYWW
 Y—Year
 W—Week



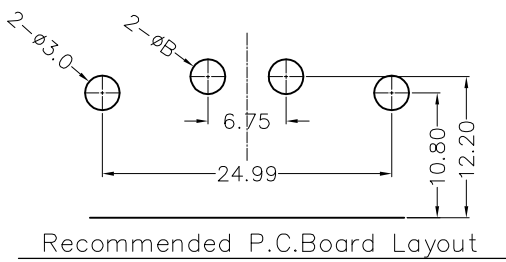
Type	Part NO.	φA	φB	Current Rating(A)
A	FDV0217-F0DB1XXBKKA	1.70	2.00	10
B	FDV0217-F0DB1XXBKKB	2.75	3.00	20
C	FDV0217-F0DB1XXBKKC	3.30	3.60	30
D	FDV0217-F0DB1XXBKKD	3.80	4.10	40



Ordering Information

FDV 02 17 — F0 D B X XX XX X X
 1 2 3 4 5 6 7 8 9 10 11

1 Category FDV—Power Type	2 Circuits 02—2V2	3 Distinction No. 17	4 Type F0—Female	5 Assembly Layout D—DIP	6 Entry Angle B—90° Angle
7 Plating 1—Gold Plated	8 Thickness of Gold Plating 03—3μ" 15—15μ" Custom Plate Available	9 Color—Resin BK—Black	10 Packaging K—Tray	11 Type A—Type A C—Type C B—Type B D—Type D	



THIRD ANGLE PROJECTION	GENERAL TOLERANCES (UNLESS SPECIFIED)		APPROVE BY FRANK	DATE 10/FEB/22	PART NO. FDV0217-F0DB1XXBKXX	ITEM NO. FDV0217	 Building Technology Cornerstone
	X.±.012(0.30)	X:±5'	CHECKED BY JACOB	DATE 10/FEB/22	TITLE POWER MACHINED CONTACT FEMALE 2V2 CONN		
DESIGN UNITS Inch (metric)	X.XX±.008(0.20)	.X'±2'	DRAWN BY MATT	DATE 10/FEB/22	THIS DRAWING CONTAINS INFORMATION THAT IS PROPRIETARY TO TXGA INDUSTRIAL ELECTRONICS(S.Z)CO.,LTD AND SHOULD NOT BE USED WITHOUT WRITTEN PERMISSION		REV 0 SHEET NO. 1/1
SCALE 5:1	SIZE A4	X.XX±.004(0.10)					