

REV	LOCATIONS	DESCRIPTION	DATE	REVISER	APPD
1	△	Size change	14/JAN/22	MATT	CHERRY

1. Electrical Characteristic

1.1 Current Rating

Power Contacts: 10 to 40A

1.2 Voltage Rating: 300V

1.3 Contact Resistance: 5 Milliohms Max

1.4 Insulation Resistance: 5000 Megaohms Min.

1.5 Dielectric Withstanding Voltage : 1000V AC r.m.s Min

2. Materials And Finish

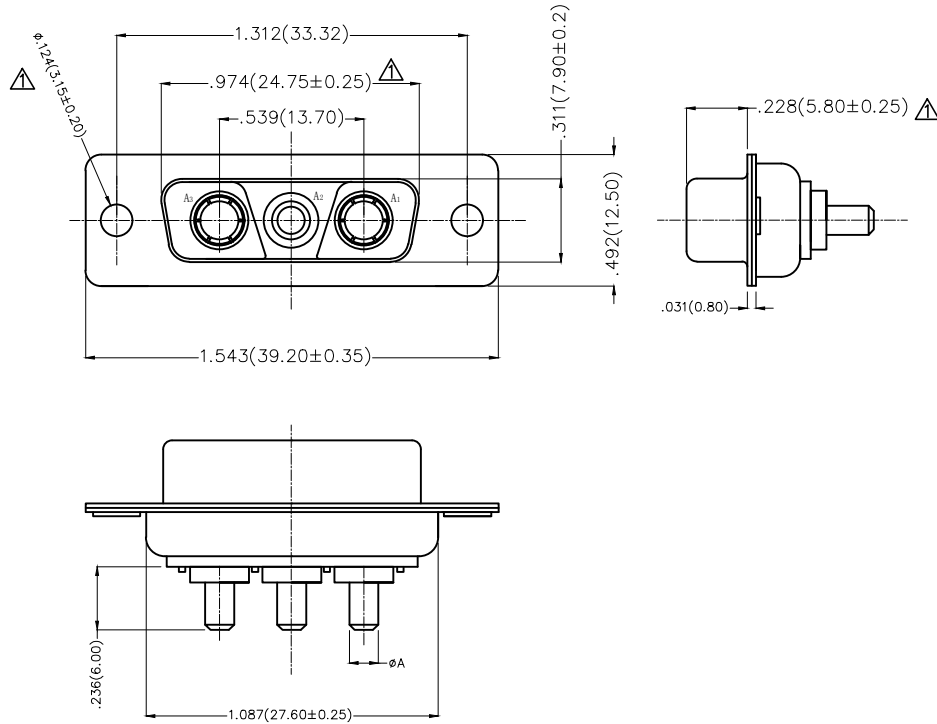
2.1 Shell: Steel Material, Front Nickel Plated 80u" Min

Back Shell Tin Plated 100u" Min

2.2 Insulator: Glass Filled Thermoplastic, UL 94V-0 , Colour: Black

2.3 Power Contacts: Bronze /Gold Plated 3u~30u"

3. Temperature Range-Operating: -55°C ~ +105°C



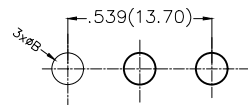
Type	Part NO.	øA	PCB. øB	Current Rating(A)
A	FDV0305-FODS1XXK6KA	.067(1.70)	.079(2.00)	10
B	FDV0305-FODS1XXK6KB	.108(2.75)	.118(3.00)	20
C	FDV0305-FODS1XXK6KC	.130(3.30)	.142(3.60)	30
D	FDV0305-FODS1XXK6KD	.150(3.80)	.161(4.10)	40


Ordering Information

FDV 03 05 — FO D S 1 XX K6 K X  
 1 2 3 4 5 6 7 8 9 10 11

1	D-sub Connector Category FDV-Power Type	2	Circuits 03-3V3	3	Distinction No. 05	4	Type FO-Female	5	Assembly Layout D-DIP	6	Entry Angle S-Vertical
7	Plating 1-Gold Plated	8	Thickness of Plating 03-3u" 15-15u" 30-30u" .....	9	Color-Resin K6-Black	10	Packaging K-Tray	11	Type A-Type A C-Type C B-Type B D-Type D		

Recommended P.C.Board Layout



THIRD ANGLE PROJECTION	GENERAL TOLERANCES (UNLESS SPECIFIED)		APPROVE BY FRANK	DATE 19/JUL/13	PART NO. FDV0305-FODS1XXK6KX	ITEM NO. FDV0305-F	 Leader Of Industry
	X.±.012(0.30)	X.±5'	CHECKED BY CHERRY	DATE 19/JUL/13	TITLE POWER MACHINED CONTACT FEMALE 3V3 CONN	REV 1	
DESIGN UNITS Inch (metric)	X.X±.008(0.20)	.X'±2'	DRAWN BY JACOB	DATE 19/JUL/13	THIS DRAWING CONTAINS INFORMATION THAT IS PROPRIETARY TO TXGA INDUSTRIAL ELECTRONICS(S.Z)CO.,LTD AND SHOULD NOT BE USED WITHOUT WRITTEN PERMISSION		
SCALE 5:1	SIZE A4	X.XX±.006(0.15)					
		X.XXX±.004(0.10)					