

| REV | LOCATIONS | DESCRIPTION | DATE | REVISER | APPD |
|-----|-----------|-------------|------|---------|------|
|     |           |             |      |         |      |

1.Electrical Characteristic

1.1Current Rating

Power Contacts:10 to 40A

1.2Voltage Rating: 300V

1.3Contact Resistance: 5Milliohms Max

1.4Insulation Resistance: 5000 Megaohms Min.

1.5Dielectric Withstanding Voltage :1000V AC r.m.s Min

2.Materials And Finish

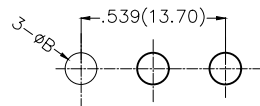
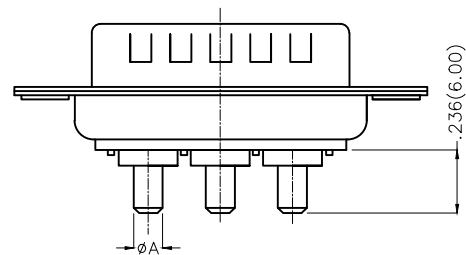
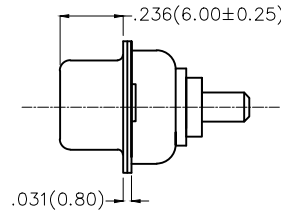
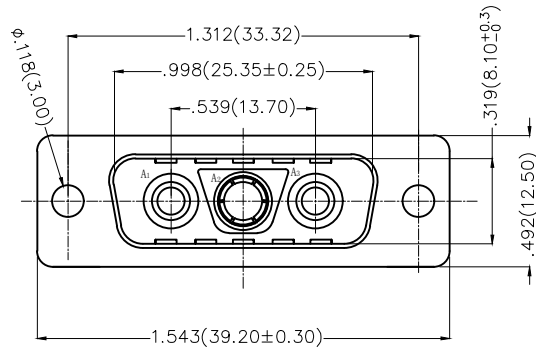
2.1Shell: Steel Material,Front Nickel Plated 80u" Min

Back Shell Tin Plated 100u" Min

2.2Insulator: Glass Filled Thermoplastic, UL 94V-0 ,Colour: Black

2.3Power Contacts: Brass/Gold Plated 3u"~30u"

3.Temperature Range-Operating: -55°C ~ +105°C



Recommended P.C.Board Layout

| Type | Part NO.            | øA         | PCB. øB    | Current Rating(A) |
|------|---------------------|------------|------------|-------------------|
| A    | FDV0305-MODS1XXK6KA | .067(1.70) | .079(2.00) | 10                |
| B    | FDV0305-MODS1XXK6KB | .108(2.75) | .118(3.00) | 20                |
| C    | FDV0305-MODS1XXK6KC | .130(3.30) | .142(3.60) | 30                |
| D    | FDV0305-MODS1XXK6KD | .150(3.80) | .161(4.10) | 40                |

Ordering Information

FDV 03 05 — MO D S 1 XX K6 K X  
 1 2 3 4 5 6 7 8 9 10 11

|   |  |   |   |   |                         |    |                     |    |  |   |                           |
|---|--|---|---|---|-------------------------|----|---------------------|----|--|---|---------------------------|
| 1 | D-sub Connector Category<br>FDV-Power Type | 2 | Circuits<br>03-3V3                                      | 3 | Distinction No.<br>05   | 4  | Type<br>MO-Male     | 5  | Assembly Layout<br>D-DIP                       | 6 | Entry Angle<br>S-Vertical |
| 7 | Plating<br>1-Gold Plated                   | 8 | Thickness of Plating<br>03-3u" 15-15u"<br>30-30u" ..... | 9 | Color-Resin<br>K6-Black | 10 | Packaging<br>K-Tray | 11 | Type<br>A-Type A C-Type C<br>B-Type B D-Type D |   |                           |

|                               |                                       |                  |                      |                   |  |                       |                           |
|-------------------------------|---------------------------------------|------------------|----------------------|-------------------|--|-----------------------|---------------------------|
| <p>THIRD ANGLE PROJECTION</p> | GENERAL TOLERANCES (UNLESS SPECIFIED) |                  | APPROVE BY<br>FRANK  | DATE<br>19/JUL/13 | PART NO.<br>FDV0305-MODS1XXK6KX  | ITEM NO.<br>FDV0305-M | <p>Leader Of Industry</p> |
|                               | X.±.012(0.30)                         | X.±5'            | CHECKED BY<br>CHERRY | DATE<br>19/JUL/13 | TITLE<br>POWER MACHINED CONTACT MALE 3V3 CONN  | REV 0                 |                           |
| DESIGN UNITS<br>Inch (metric) | X.X±.008(0.20)                        | .X'±2'           | DRAWN BY<br>JACOB    | DATE<br>19/JUL/13 | THIS DRAWING CONTAINS INFORMATION THAT IS PROPRIETARY TO TXGA INDUSTRIAL ELECTRONICS(S.Z)CO.,LTD AND SHOULD NOT BE USED WITHOUT WRITTEN PERMISSION |                       |                           |
| SCALE<br>5:1                  | SIZE<br>A4                            | X.XX±.006(0.15)  | .XX'±1'              |                   |  |                       |                           |
|                               |                                       | X.XXX±.004(0.10) | .XXX±0.5'            |                   |  |                       |                           |