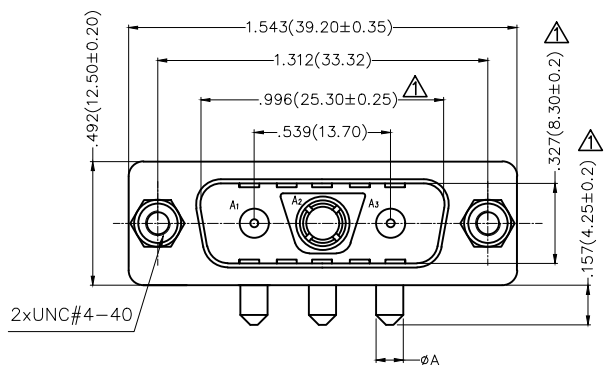


REV	LOCATIONS	DESCRIPTION	DATE	REVISER	APPD
1	△	Update version,Size change Add marking code	27/Mar/26	NICK	LEO

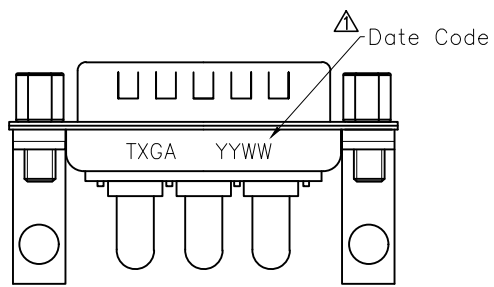
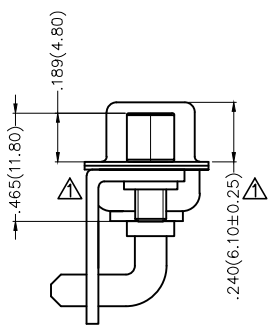
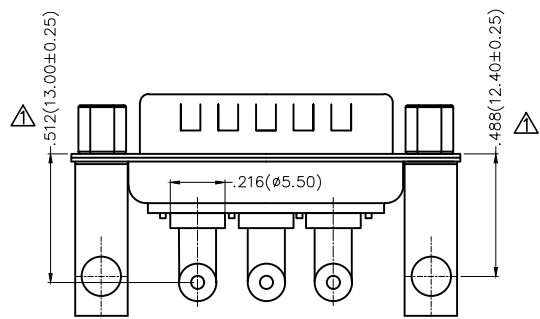


MATERIALS AND FINISH

Shell: Steel or Brass Material, Tin/Ni or Au Finished
 Connector Insulator: PBT Thermoplastic, 30% Glass Filled, UL 94V-0 Rated
 Bracket Material: Brass; Ni Finished
 High Power Contact Material: Brass ; 3u~50u" Gold Plated
 Screws: Copper Alloy/Nickel Plated

ELECTRICAL CHARACTERISTICS

High Power Contact Current Rating: 10,20,30,or 40 AMPS
 High Power Contact Resistance: 2.7 Milliohms Max.
 Dielectric Withstanding Voltage: 1000 V AC for 1 Minute
 Insulation Resistance: 5000 Megaohms Min.
 Temperature Rating: -55°C~+125°C

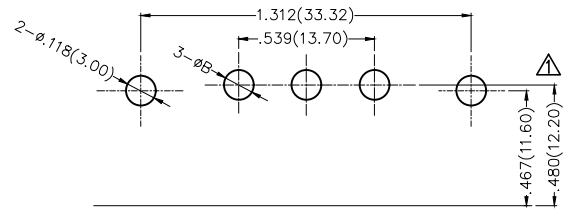


TYPE	Part No.	Dimensions(in/mm)		Current Rating (A)
		A	B	
A	FDV0311-MODB1XXXXKA	.108(2.75)	.118(3.00)	20
B	FDV0311-MODB1XXXXKB	.067(1.70)	.079(2.00)	10
C	FDV0311-MODB1XXXXKC	.130(3.30)	.142(3.60)	30
D	FDV0311-MODB1XXXXKD	.150(3.80)	.161(4.10)	40


Ordering Information

FDV 03 11 - M0 D B 1 XX XX K X
 1 2 3 4 5 6 7 8 9 10 11

1 D-sub Connector Category FDV-Power Type	2 Circuits 03-3V3	3 Distinction No. 11	4 Type M0-Male	5 Assembly Layout D-DIP	6 Entry Angle B-90° Angle
7 Plating 1-Gold Plated	8 Thickness of Plating 03-3u" 10-10u" ... Custom Plate Available	9 Color-Resin K6-Black W1-White	10 Packaging K-Tray	11 Products Categories A-Type A B-Type B C-Type C D-Type D	



Recommended P.C.Board Layout

THIRD ANGLE PROJECTION	GENERAL TOLERANCES (UNLESS SPECIFIED)		APPROVE BY FRANK	DATE 18/JUN/13	PART NO. FDV0311-MODB1XXXXKX	ITEM NO. FDV0311-M0	 Leader Of Industry
	DESIGN UNITS Inch (metric)	X.±.012(0.30) X.X±.008(0.20) X.XX±.006(0.15) X.XXX±.004(0.10)	X.±5° X.±2° X.X±1° X.XX±0.5°	CHECKED BY CHERRY	DATE 18/JUN/13	TITLE D-SUB Connector Power Type Male Series	
SCALE 5:1	SIZE A4		DRAWN BY KATE	DATE 18/JUN/13	THIS DRAWING CONTAINS INFORMATION THAT IS PROPRIETARY TO TXGA INDUSTRIAL ELECTRONICS(S.Z)CO.,LTD AND SHOULD NOT BE USED WITHOUT WRITTEN PERMISSION		REV 1 SHEET NO. 1/1