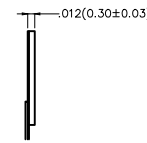
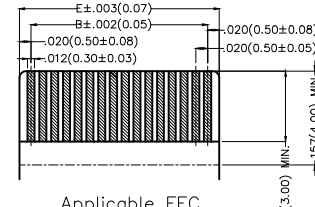
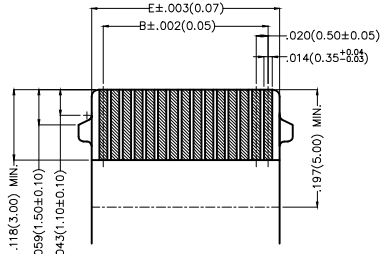
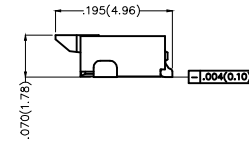
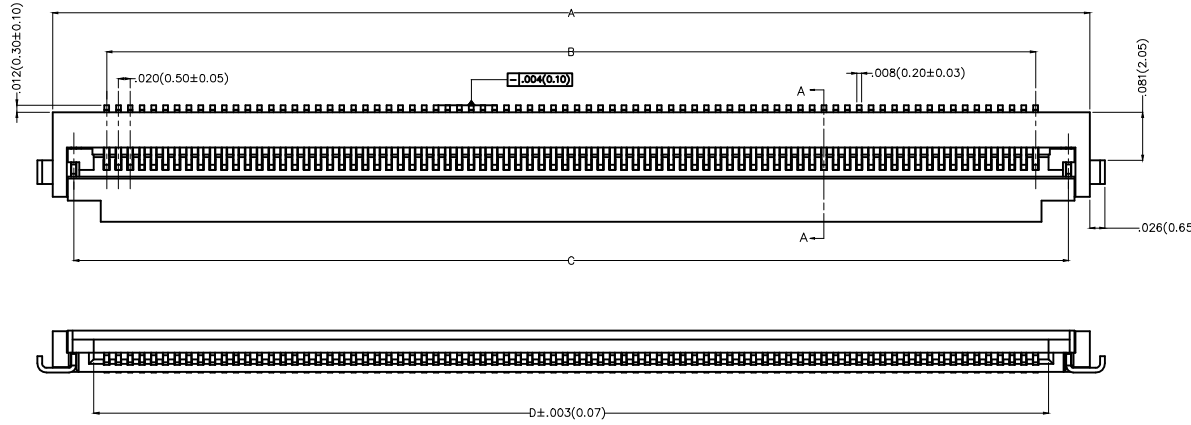


REV	LOCATIONS	DESCRIPTION	DATE	REVISER	APPD

**Electrical**  
 Current Rating: 0.5A AC(rms)/DC  
 Voltage Rating: 50V AC(rms)/DC  
 Contact Resistance: 20 mΩ Max  
 Insulation Resistance: 500 MΩ MIN  
 Withstanding Voltage: 200V AC r.m.s  
 Temperature Range—Operating: -25°C ~ +85°C

**Material and Plating**  
 Housing: Thermoplastic UL 94V-0  
 Actuator: Thermoplastic UL 94V-0  
 Terminal: Phosphor Bronze/Gold-Plated  
 Fitting Nail: Brass Matte Tin Plated



Circuits (n)	Part No.	Dimension(in/mm)				
		A	B	C	D	E
60	FFC05040-60SBB113WSM	1.343(34.10)	1.161(29.50)	1.272(32.30)	1.205(30.60)	1.201(30.50)
80	FFC05040-80SBB113WSM	1.736(44.10)	1.555(39.50)	1.665(42.30)	1.598(40.60)	1.594(40.50)

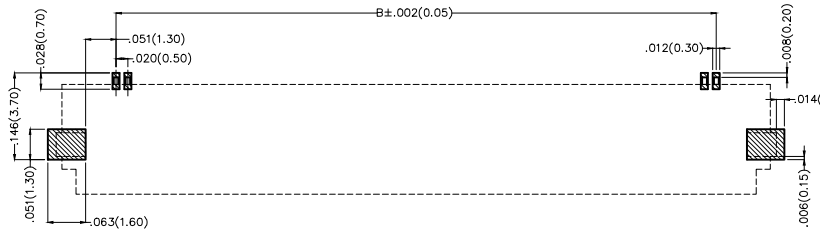
Applicable FFC Recommended Dimension

Applicable FFC Recommended Dimension

Ordering Information

FFC 050 40 — XX S B B 1 1 3 W5 M  
 1 2 3 4 5 6 7 8 9 10 11 12

1 Category FFC-FPC	2 Series Number 050—Pitch0.50mm	3 Distinction No. 40	4 Circuits XX	5 Assemble Layout S-SMT	6 Entry Angle B- 90° Angle
7 Contact Position B—Bottom	8 ZIF 1—ZIF	9 Plating 1—Gold Plated	10 Material—Resin 3—LCP	11 Color—Resin W5—Housing: Natural, Actuator: Black	12 Packaging M—Reel



Recommended P.C.Board Layout

 THIRD ANGLE PROJECTION DESIGN UNITS Inch (metric) SCALE 5:1 SIZE A4	GENERAL TOLERANCES (UNLESS SPECIFIED) X.±.012(0.30) X.±5° X.X±.008(0.20) X.±2° X.XX±.006(0.15) .XX±1° X.XXX±.004(0.10) .XXX±0.5°		APPROVE BY FRANK CHECKED BY CHERRY DRAWN BY LXF	DATE 09/MAY/17 DATE 09/MAY/17 DATE 09/MAY/17	PART NO. FFC05040—XXSBB113WSM TITLE FPC/FFC connector 0.5mm Bottom contact SMT	TEM NO. FFC05040	 Leader Of Industry
	THIS DRAWING CONTAINS INFORMATION THAT IS PROPRIETARY TO TXGA INDUSTRIAL ELECTRONICS(S.Z)CO.,LTD AND SHOULD NOT BE USED WITHOUT WRITTEN PERMISSION		REV 1	SHEET NO. 1/1			

Autodesk

Autodesk