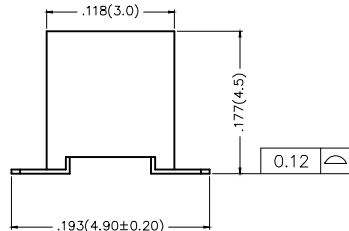
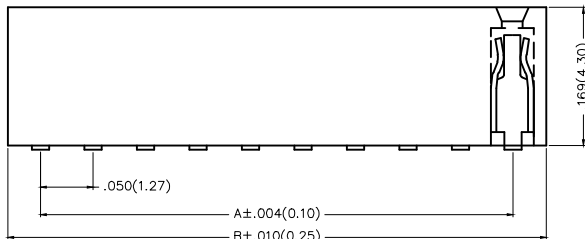
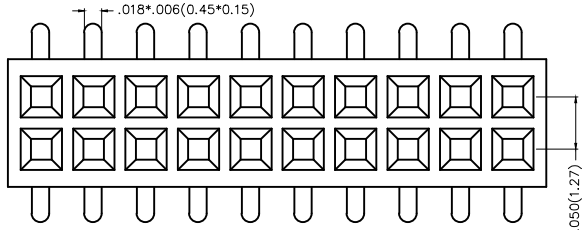


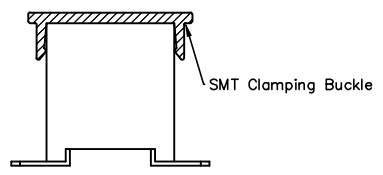
REV	LOCATIONS	DESCRIPTION	DATE	REVISER	APPD

Electrical
 Current Rating: 1A AC(rms)/DC
 Voltage Rating: 250V AC(rms)/DC
 Contact Resistance: 20 mΩ Max
 Insulation Resistance: 1000 MΩ MIN
 Withstanding Voltage: 500V AC r.m.s
 Temperature Range-Operating: -40°C~+85°C

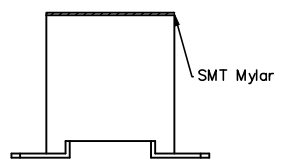
Material and Plating
 Housing: Glass Filled Polyester(UL 94V-0)
 Contact Pin: Phosphor Bronze
 Plating: Gold Plated/Selective gold on contact area, tin on tail



Packing: M-Reel(With Cap)



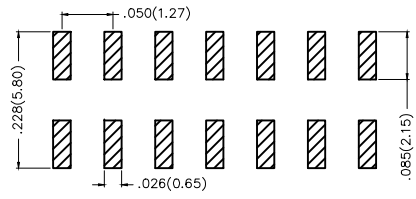
Packing: M1-Reel(With Mylar)



Ordering Information

FFH 127 13 — D XX S X XX X K6 XX
 1 2 3 4 5 6 7 8 9 10 11

- 1 Category
FFH-Female Header
- 2 Series Number
127-Pitch1.27mm
- 3 Distinction No.
13
- 4 Row Option
D-Double Row
- 5 Circuits
XX
- 6 Entry Angle
S-180° Vertical
- 7 Plating
1-Gold Plated
3-Selective gold on contact area, tin on tail
- 8 Thickness of Plating
00-Gold Flash
05-5μ"
Custom plate available
- 9 Material-Resin
3-LCP
4-PA6T
5-PA9T
- 10 Color-Resin
K6-Black
- 11 Packaging
M-Reel(With Cap)
M1-Reel(With Mylar)
L-Tube



Recommended P.C.Board Layout

 THIRD ANGLE PROJECTION	GENERAL TOLERANCES (UNLESS SPECIFIED)		APPROVE BY FRANK	DATE 10/JUL/13	PART NO. FFH12713-DXXSXXXK6XX	ITEM NO. FFH12713	 Building Technology Cornerstone	
	DESIGN UNITS Inch (metric)	X.±.012(0.30) X.X±.010(0.25) X.XX±.008(0.20) X.XXX±.004(0.10)	X'±5" .X'±2" .XX'±1" .XXX'±0.5"	CHECKED BY CHERRY	DATE 10/JUL/13	TITLE Board to Board (Female Header) Pitch 1.27mm 180° Vertical (SMT)		REV 0
SCALE 5:1	SIZE A4	DRAWN BY JACOB		DATE 10/JUL/13	THIS DRAWING CONTAINS INFORMATION THAT IS PROPRIETARY TO TXGA INDUSTRIAL ELECTRONICS(S.Z)CO.,LTD AND SHOULD NOT BE USED WITHOUT WRITTEN PERMISSION			

1 2 3 4 5 6 7 8

REV	LOCATIONS	DESCRIPTION	DATE	REVSER	APPD

A

A

B

B

C

C

D

D

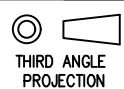

E

E

F

F

Circuits (n)	Part No.	Dimensions(in/mm)		Circuits (n)	Part No.	Dimensions(in/mm)	
		A	B			A	B
4	FFH12713-D04SXXXXK6XX	.050(1.27)	.113(2.89)	54	FFH12713-D54SXXXXK6XX	1.300(33.02)	1.364(34.64)
6	FFH12713-D06SXXXXK6XX	.100(2.54)	.164(4.16)	56	FFH12713-D56SXXXXK6XX	1.350(34.29)	1.414(35.91)
8	FFH12713-D08SXXXXK6XX	.150(3.81)	.214(5.43)	58	FFH12713-D58SXXXXK6XX	1.400(35.56)	1.464(37.18)
10	FFH12713-D10SXXXXK6XX	.200(5.08)	.264(6.70)	60	FFH12713-D60SXXXXK6XX	1.450(36.83)	1.514(38.45)
12	FFH12713-D12SXXXXK6XX	.250(6.35)	.314(7.97)	62	FFH12713-D62SXXXXK6XX	1.500(38.10)	1.564(39.72)
14	FFH12713-D14SXXXXK6XX	.300(7.62)	.364(9.24)	64	FFH12713-D64SXXXXK6XX	1.550(39.37)	1.614(40.99)
16	FFH12713-D16SXXXXK6XX	.350(8.89)	.414(10.51)	66	FFH12713-D66SXXXXK6XX	1.600(40.64)	1.664(42.26)
18	FFH12713-D18SXXXXK6XX	.400(10.16)	.464(11.78)	68	FFH12713-D68SXXXXK6XX	1.650(41.91)	1.714(43.53)
20	FFH12713-D20SXXXXK6XX	.450(11.43)	.514(13.05)	70	FFH12713-D70SXXXXK6XX	1.700(43.18)	1.764(44.80)
22	FFH12713-D22SXXXXK6XX	.500(12.70)	.564(14.32)	72	FFH12713-D72SXXXXK6XX	1.750(44.45)	1.814(46.07)
24	FFH12713-D24SXXXXK6XX	.550(13.97)	.614(15.59)	74	FFH12713-D74SXXXXK6XX	1.800(45.72)	1.864(47.34)
26	FFH12713-D26SXXXXK6XX	.600(15.24)	.664(16.86)	76	FFH12713-D76SXXXXK6XX	1.850(46.99)	1.914(48.61)
28	FFH12713-D28SXXXXK6XX	.650(16.51)	.714(18.13)	78	FFH12713-D78SXXXXK6XX	1.900(48.26)	1.964(49.88)
30	FFH12713-D30SXXXXK6XX	.700(17.78)	.764(19.40)	80	FFH12713-D80SXXXXK6XX	1.950(49.53)	2.014(51.55)
32	FFH12713-D32SXXXXK6XX	.750(19.05)	.814(20.67)	82	FFH12713-D82SXXXXK6XX	2.000(50.80)	2.064(52.42)
34	FFH12713-D34SXXXXK6XX	.800(20.32)	.864(21.94)	84	FFH12713-D84SXXXXK6XX	2.050(52.07)	2.114(53.69)
36	FFH12713-D36SXXXXK6XX	.850(21.59)	.914(23.21)	86	FFH12713-D86SXXXXK6XX	2.100(53.34)	2.164(54.69)
38	FFH12713-D38SXXXXK6XX	.900(22.86)	.964(24.48)	88	FFH12713-D88SXXXXK6XX	2.150(54.61)	2.214(56.23)
40	FFH12713-D40SXXXXK6XX	.950(24.13)	1.014(25.75)	90	FFH12713-D90SXXXXK6XX	2.200(55.88)	2.264(57.50)
42	FFH12713-D42SXXXXK6XX	1.000(25.40)	1.064(27.02)	92	FFH12713-D92SXXXXK6XX	2.250(57.15)	2.314(58.77)
44	FFH12713-D44SXXXXK6XX	1.050(26.67)	1.114(28.29)	94	FFH12713-D94SXXXXK6XX	2.300(58.42)	2.364(60.04)
46	FFH12713-D46SXXXXK6XX	1.100(27.94)	1.164(29.56)	96	FFH12713-D96SXXXXK6XX	2.350(59.69)	2.414(61.31)
48	FFH12713-D48SXXXXK6XX	1.150(29.21)	1.214(30.83)	98	FFH12713-D98SXXXXK6XX	2.400(60.96)	2.464(62.58)
50	FFH12713-D50SXXXXK6XX	1.200(30.48)	1.264(32.10)	100	FFH12713-D100SXXXXK6XX	2.450(62.23)	2.514(63.85)
52	FFH12713-D52SXXXXK6XX	1.250(31.75)	1.314(33.37)				

 THIRD ANGLE PROJECTION	GENERAL TOLERANCES (UNLESS SPECIFIED)		APPROVE BY FRANK	DATE 10/JUL/13	PART NO. FFH12713-DXXSXXXXK6XX	ITEM NO. FFH12713	 Building Technology Cornerstone	
	X.±.012(0.30)	X.±5'	CHECKED BY CHERRY	DATE 10/JUL/13	TITLE Board to Board (Female Header) Pitch 1.27mm 180° Vertical (SMT)			REV 0
	DESIGN UNITS Inch (metric)	X.X±.010(0.25)	.X'±2'	DRAWN BY JACOB	DATE 10/JUL/13	THIS DRAWING CONTAINS INFORMATION THAT IS PROPRIETARY TO TXGA INDUSTRIAL ELECTRONICS(S.Z)CO.,LTD AND SHOULD NOT BE USED WITHOUT WRITTEN PERMISSION		
	SCALE 5:1	SIZE A4	X.XX±.008(0.20)	.XX'±1'	X.XXX±.004(0.10)	.XXX'±0.5'		

1 2 3 4 5 6 7 8

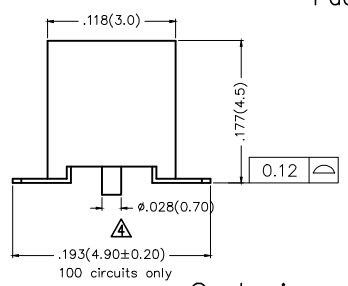
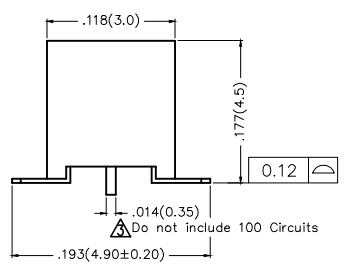
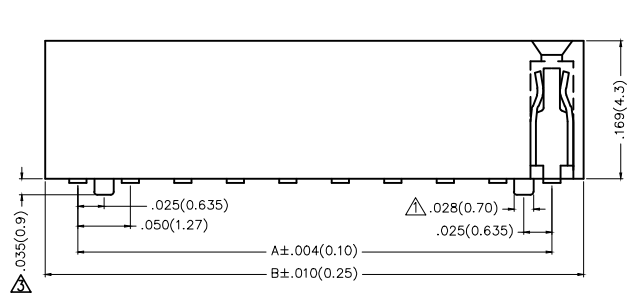
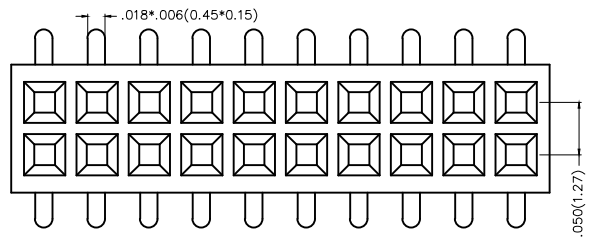
REV	LOCATIONS	DESCRIPTION	DATE	REVISER	APPD
1		Change the positioning column	02/June/15	KEVIN	FRANK
2		Part No. FFH12714 Change to FFH12713A	02/Sep/15	CHERRY	FRANK
3		Size changes	13/MAY/20	KATE	CHERRY
4		Update the column structure of 100 circuits	28/MAR/22	IRENE	CHERRY

Electrical

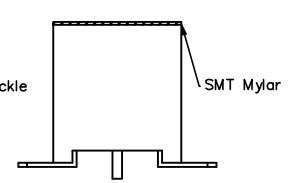
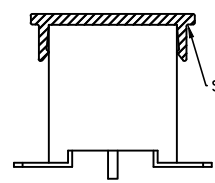
Current Rating: 1A AC(rms)/DC
Voltage Rating: 250V AC(rms)/DC
Contact Resistance: 20 mΩ Max
Insulation Resistance: 1000 MΩ MIN
Withstanding Voltage: 500V AC r.m.s
Temperature Range-Operating: -40°C~+85°C

Material and Plating

Housing: Glass Filled Polyester(UL 94V-0)
Contact Pin: Phosphor Bronze
Plating: Gold plated/ Selective gold plated on contact area and 120μ" Min. matte tin plated on tails area



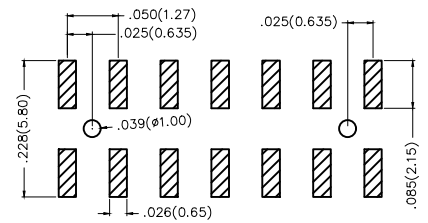
Packing: M-Reel(With Cap) Packing: M1-Reel(With Mylar)



Ordering Information

FFH 127 13 — D XX S X XX 4 K6 XX A
1 2 3 4 5 6 7 8 9 10 11 12

1 <u>Category</u> FFH-Female Header	2 <u>Series Number</u> 127-Pitch1.27mm	3 <u>Distinction No.</u> 13	4 <u>Row Option</u> D-Double Row	5 <u>Circuits</u> XX	6 <u>Entry Angle</u> S-180° Vertical
7 <u>Plating</u> 1-Gold plated 7-Selective gold plated on contact area and matte tin plated on tails area	8 <u>Thickness of Plating</u> 00-Gold Flash 05-5μ" Custom plate available	9 <u>Material-Resin</u> 3-LCP 4-PA6T 5-PA9T	10 <u>Color-Resin</u> K6-Black	11 <u>Packaging</u> M-Reel(With Cap) M1-Reel(With Mylar) L-Tube	12 <u>Type</u> A-With Position





Recommended P.C.Board Layout

THIRD ANGLE PROJECTION	GENERAL TOLERANCES (UNLESS SPECIFIED)		APPROVE BY FRANK	DATE 10/JUL/13	PART NO. FFH12713-DXXSXXX4K6XXA	ITEM NO. FFH12713	 Building Technology Cornerstone
	DESIGN UNITS Inch (metric)	X.±.012(0.30) X'±5"	CHECKED BY CHERRY	DATE 10/JUL/13	TITLE Board to Board (Female Header) Pitch 1.27mm 180° Vertical (SMT)	REV 4	
SCALE 5:1	SIZE A4	X.XX±.008(0.20) .XX'±1"	DRAWN BY JACOB	DATE 10/JUL/13	THIS DRAWING CONTAINS INFORMATION THAT IS PROPRIETARY TO TXGA INDUSTRIAL ELECTRONICS(S.Z)CO.,LTD AND SHOULD NOT BE USED WITHOUT WRITTEN PERMISSION		

REV	LOCATIONS	DESCRIPTION	DATE	REVISER	APPD

Circuits (n)	Part No. Δ	Dimensions(in/mm)		Circuits (n)	Part No. Δ	Dimensions(in/mm)	
		A	B			A	B
6	FFH12713-D06SXXXXK6XXA	.100(2.54)	.164(4.16)	46	FFH12713-D46SXXXXK6XXA	1.100(27.94)	1.164(29.56)
8	FFH12713-D08SXXXXK6XXA	.150(3.81)	.214(5.43)	48	FFH12713-D48SXXXXK6XXA	1.150(29.21)	1.214(30.83)
10	FFH12713-D10SXXXXK6XXA	.200(5.08)	.264(6.70)	50	FFH12713-D50SXXXXK6XXA	1.200(30.48)	1.264(32.10)
12	FFH12713-D12SXXXXK6XXA	.250(6.35)	.314(7.97)	52	FFH12713-D52SXXXXK6XXA	1.250(31.75)	1.314(33.37)
14	FFH12713-D14SXXXXK6XXA	.300(7.62)	.364(9.24)	54	FFH12713-D54SXXXXK6XXA	1.300(33.02)	1.364(34.64)
16	FFH12713-D16SXXXXK6XXA	.350(8.89)	.414(10.51)	56	FFH12713-D56SXXXXK6XXA	1.350(34.29)	1.414(35.91)
18	FFH12713-D18SXXXXK6XXA	.400(10.16)	.464(11.78)	58	FFH12713-D58SXXXXK6XXA	1.400(35.56)	1.464(37.18)
20	FFH12713-D20SXXXXK6XXA	.450(11.43)	.514(13.05)	60	FFH12713-D60SXXXXK6XXA	1.450(36.83)	1.514(38.45)
22	FFH12713-D22SXXXXK6XXA	.500(12.70)	.564(14.32)	62	FFH12713-D62SXXXXK6XXA	1.500(38.10)	1.564(39.72)
24	FFH12713-D24SXXXXK6XXA	.550(13.97)	.614(15.59)	64	FFH12713-D64SXXXXK6XXA	1.550(39.37)	1.614(40.99)
26	FFH12713-D26SXXXXK6XXA	.600(15.24)	.664(16.86)	66	FFH12713-D66SXXXXK6XXA	1.600(40.64)	1.664(42.26)
28	FFH12713-D28SXXXXK6XXA	.650(16.51)	.714(18.13)	68	FFH12713-D68SXXXXK6XXA	1.650(41.91)	1.714(43.53)
30	FFH12713-D30SXXXXK6XXA	.700(17.78)	.764(19.40)	70	FFH12713-D70SXXXXK6XXA	1.700(43.18)	1.764(44.80)
32	FFH12713-D32SXXXXK6XXA	.750(19.05)	.814(20.67)	72	FFH12713-D72SXXXXK6XXA	1.750(44.45)	1.814(46.07)
34	FFH12713-D34SXXXXK6XXA	.800(20.32)	.864(21.94)	74	FFH12713-D74SXXXXK6XXA	1.800(45.72)	1.864(47.34)
36	FFH12713-D36SXXXXK6XXA	.850(21.59)	.914(23.21)	76	FFH12713-D76SXXXXK6XXA	1.850(46.99)	1.914(48.61)
38	FFH12713-D38SXXXXK6XXA	.900(22.86)	.964(24.48)	78	FFH12713-D78SXXXXK6XXA	1.900(48.26)	1.964(49.88)
40	FFH12713-D40SXXXXK6XXA	.950(24.13)	1.014(25.75)	80	FFH12713-D80SXXXXK6XXA	1.950(49.53)	2.014(51.55)
42	FFH12713-D42SXXXXK6XXA	1.000(25.40)	1.064(27.02)	100	FFH12713-D100SXXXXK6XXA	2.450(62.23)	2.514(63.85)
44	FFH12713-D44SXXXXK6XXA	1.050(26.67)	1.114(28.29)				

 THIRD ANGLE PROJECTION	GENERAL TOLERANCES (UNLESS SPECIFIED)		APPROVE BY FRANK	DATE 10/JUL/13	PART NO. Δ FFH12713-DXXSXXX4K6XXA	ITEM NO. FFH12713	 Building Technology Cornerstone	
	DESIGN UNITS Inch (metric)	X.±.012(0.30) X.X±.010(0.25)	X.±5° .X°±2°	CHECKED BY CHERRY	DATE 10/JUL/13	TITLE Board to Board (Female Header) Pitch 1.27mm 180° Vertical (SMT)		REV 4 SHEET NO. 2/2
SCALE 5:1	SIZE A4	X.XX±.008(0.20) X.XXX±.004(0.10)	.XX'±1" .XXX'±0.5'	DRAWN BY JACOB	DATE 10/JUL/13	THIS DRAWING CONTAINS INFORMATION THAT IS PROPRIETARY TO TXGA INDUSTRIAL ELECTRONICS(S.Z)CO.,LTD AND SHOULD NOT BE USED WITHOUT WRITTEN PERMISSION		