

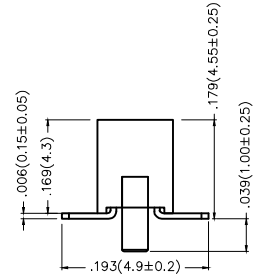
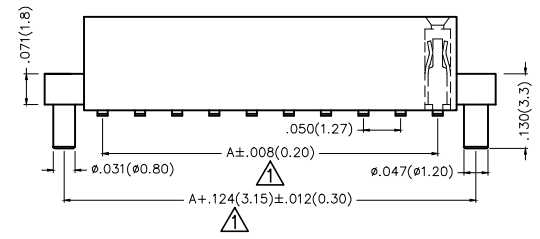
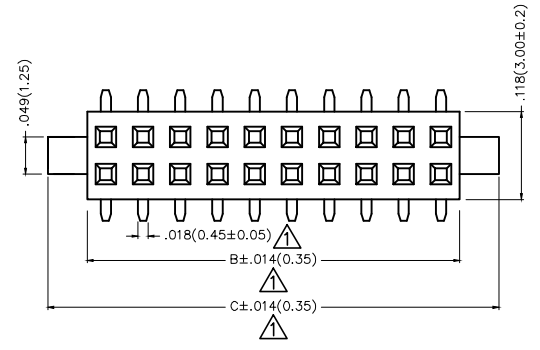
REV	LOCATIONS	DESCRIPTION	DATE	REVISOR	APPD
1	△	Size changes	28/JUL/20	KATE	CHERRY

Electrical

Current Rating: 1A AC(rms)/DC
 Voltage Rating: 250V AC(rms)/DC
 Contact Resistance: 20 mΩ Max
 Insulation Resistance: 1000 MΩ MIN
 Withstanding Voltage: 500V AC r.m.s
 Temperature Range-Operating: -40°C~+105°C

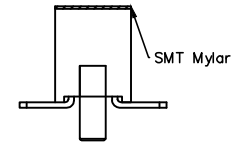
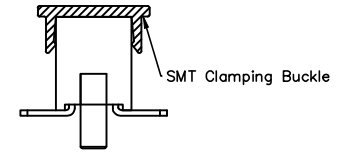
Material and Plating

Housing: PA6T(UL 94V-0)
 Contact Pin: Phosphor Bronze
 Plating: Gold Plated/Selective gold on contact area, tin on tail



Packing: M-Reel(With Cap)

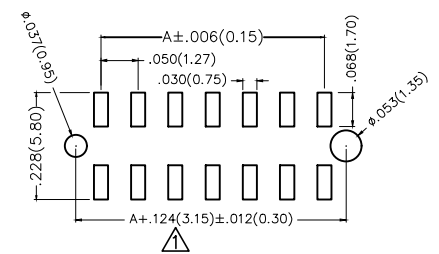
Packing: M1-Reel(With Mylar)




Ordering Information

FFH 127 16 — D XX S 1 XX 4 K6 XX
 1 2 3 4 5 6 7 8 9 10 11

1 Category FFH-Female Header	2 Series Number 127-Pitch1.27mm	3 Distinction No. 16	4 Row Option D-Double Row	5 Circuits XX	6 Entry Angle S-180° Vertical
7 Plating 1-Gold Plated 3-Selective gold on contact area, tin on tail	8 Thickness of Plating 00-Gold Flash 05-5µ" Custom plate available	9 Material-Resin 4-PA6T	10 Color-Resin K6-Black	11 Packaging M-Reel(With Cap) M1-Reel(With Mylar)	

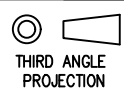



Recommended P.C.Board Layout

THIRD ANGLE PROJECTION	GENERAL TOLERANCES (UNLESS SPECIFIED)		APPROVE BY FRANK	DATE 10/JUL/13	PART NO. FFH12716-DXXSXX4K6XX	ITEM NO. FFH12716	 Leader Of Industry
	DESIGN UNITS Inch (metric)	X.±.012(0.30) X.X±.008(0.20) X.XX±.006(0.15) X.XXX±.004(0.10)	X'±5" .X'±2" .XX'±1" .XXX'±0.5"	CHECKED BY CHERRY	DATE 10/JUL/13	TITLE Board to Board (Female Header) Pitch 1.27mm 180° Vertical (SMT)	
SCALE 5:1	SIZE A4	DRAWN BY JACOB		DATE 10/JUL/13	THIS DRAWING CONTAINS INFORMATION THAT IS PROPRIETARY TO TXGA INDUSTRIAL ELECTRONICS(S.Z)CO.,LTD AND SHOULD NOT BE USED WITHOUT WRITTEN PERMISSION		

REV	LOCATIONS	DESCRIPTION	DATE	REVSER	APPD

Circuits (n)	Part No.	Dimensions(in/mm)			Circuits (n)	Part No.	Dimensions(in/mm)		
		A	B	C Δ			A	B	C Δ
4	FFH12716-D04SXXX4K6XX	.050(1.27)	.118(2.99)	.248(6.29)	46	FFH12716-D46SXXX4K6XX	1.100(27.94)	1.168(29.66)	1.298(32.96)
8	FFH12716-D08SXXX4K6XX	.150(3.81)	.218(5.53)	.348(8.83)	48	FFH12716-D48SXXX4K6XX	1.150(29.21)	1.218(30.93)	1.348(34.23)
10	FFH12716-D10SXXX4K6XX	.200(5.08)	.268(6.80)	.398(10.10)	50	FFH12716-D50SXXX4K6XX	1.200(30.48)	1.268(32.20)	1.398(35.50)
12	FFH12716-D12SXXX4K6XX	.250(6.35)	.318(8.07)	.448(11.37)	52	FFH12716-D52SXXX4K6XX	1.250(31.75)	1.318(33.47)	1.448(36.77)
14	FFH12716-D14SXXX4K6XX	.300(7.62)	.368(9.34)	.498(12.64)	54	FFH12716-D54SXXX4K6XX	1.300(33.02)	1.368(34.74)	1.498(38.04)
16	FFH12716-D16SXXX4K6XX	.350(8.89)	.418(10.61)	.548(13.91)	56	FFH12716-D56SXXX4K6XX	1.350(34.29)	1.418(36.01)	1.548(39.31)
18	FFH12716-D18SXXX4K6XX	.400(10.16)	.468(11.88)	.598(15.18)	58	FFH12716-D58SXXX4K6XX	1.400(35.56)	1.468(37.28)	1.598(40.58)
20	FFH12716-D20SXXX4K6XX	.450(11.43)	.518(13.15)	.648(16.45)	60	FFH12716-D60SXXX4K6XX	1.450(36.83)	1.518(38.55)	1.648(41.85)
22	FFH12716-D22SXXX4K6XX	.500(12.70)	.567(14.42)	.698(17.72)	62	FFH12716-D62SXXX4K6XX	1.500(38.10)	1.568(39.82)	1.698(43.12)
24	FFH12716-D24SXXX4K6XX	.550(13.97)	.617(15.69)	.748(18.99)	64	FFH12716-D64SXXX4K6XX	1.550(39.37)	1.618(41.09)	1.748(44.39)
26	FFH12716-D26SXXX4K6XX	.600(15.24)	.668(16.96)	.798(20.26)	66	FFH12716-D66SXXX4K6XX	1.600(40.64)	1.668(42.36)	1.798(45.66)
28	FFH12716-D28SXXX4K6XX	.650(16.51)	.718(18.23)	.848(21.53)	68	FFH12716-D68SXXX4K6XX	1.650(41.91)	1.718(43.63)	1.848(46.93)
30	FFH12716-D30SXXX4K6XX	.700(17.78)	.768(19.50)	.898(22.80)	70	FFH12716-D70SXXX4K6XX	1.700(43.18)	1.768(44.90)	1.898(48.20)
32	FFH12716-D32SXXX4K6XX	.750(19.05)	.818(20.77)	.948(24.07)	72	FFH12716-D72SXXX4K6XX	1.750(44.45)	1.818(46.17)	1.948(49.47)
34	FFH12716-D34SXXX4K6XX	.800(20.32)	.868(22.04)	.998(25.34)	74	FFH12716-D74SXXX4K6XX	1.800(45.72)	1.868(47.44)	1.998(50.74)
36	FFH12716-D36SXXX4K6XX	.850(21.59)	.918(23.31)	1.048(26.61)	76	FFH12716-D76SXXX4K6XX	1.850(46.99)	1.918(48.71)	2.048(52.01)
38	FFH12716-D38SXXX4K6XX	.900(22.86)	.968(24.58)	1.098(27.88)	78	FFH12716-D78SXXX4K6XX	1.900(48.26)	1.968(49.98)	2.098(53.28)
40	FFH12716-D40SXXX4K6XX	.950(24.13)	1.018(25.85)	1.148(29.15)	80	FFH12716-D80SXXX4K6XX	1.950(49.53)	2.033(51.65)	2.148(54.55)
42	FFH12716-D42SXXX4K6XX	1.000(25.40)	1.068(27.12)	1.198(30.42)	100	FFH12716-D100SXXX4K6XX	2.450(62.23)	2.518(63.95)	2.648(67.25)
44	FFH12716-D44SXXX4K6XX	1.050(26.67)	1.118(28.39)	1.248(31.69)					

 THIRD ANGLE PROJECTION	GENERAL TOLERANCES (UNLESS SPECIFIED)		APPROVE BY FRANK	DATE 10/JUL/13	PART NO. FFH12716-DXXSXXX4K6XX	ITEM NO. FFH12716	 Leader Of Industry	
	X.±.012(0.30)	X.±5'	CHECKED BY CHERRY	DATE 10/JUL/13	TITLE Board to Board (Female Header) Pitch 1.27mm 180° Vertical (SMT)			REV 1
	DESIGN UNITS Inch (metric)	X.X±.008(0.20)	.X±2'	DRAWN BY JACOB	DATE 10/JUL/13	THIS DRAWING CONTAINS INFORMATION THAT IS PROPRIETARY TO TXGA INDUSTRIAL ELECTRONICS(S.Z)CO.,LTD AND SHOULD NOT BE USED WITHOUT WRITTEN PERMISSION		
	SCALE 5:1	SIZE A4	X.XX±.006(0.15)	.XX±1'	X.XXX±.004(0.10)	.XX±0.5'		