

1 2 3 4 5 6 7 8

REV	LOCATIONS	DESCRIPTION	DATE	REVISER	APPD

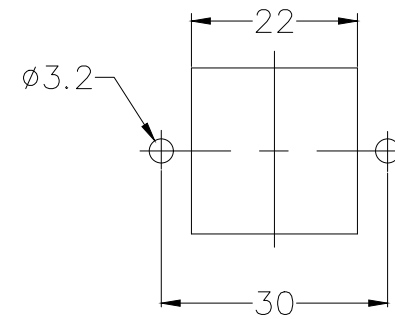
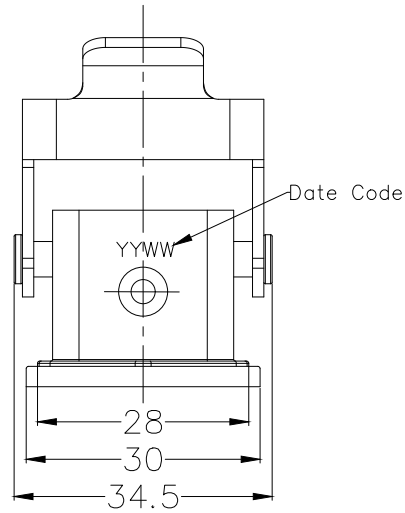
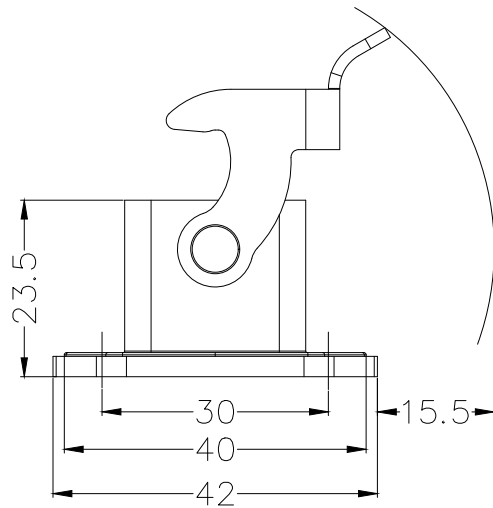
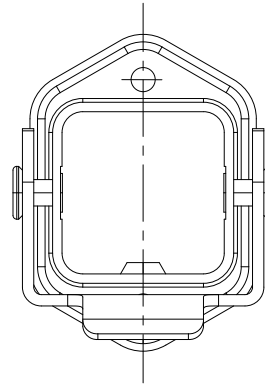
**SPECIFICATIONS**

**Material**

Body: Zinc die-cast, powder-coated (Grey)  
 Locking element: Stainless steel  
 Sealing element: NBR

**Mechanical**

Temperature Range-Operating: -40°C ~ +125°C  
 Degree of protection: IP65 (sealed state)  
 Cable entry: Bottom cable entry



Recommended Panel Layout

A  
B  
C  
D  
E  
F

A  
B  
C  
D  
E  
F

1 2 3 4 5 6 7 8

<p>THIRD ANGLE PROJECTION</p>	GENERAL TOLERANCES (UNLESS SPECIFIED)		APPROVE BY	DATE	PART NO.	ITEM NO.	<p>Building Technology Cornerstone</p>	
	X. ±0.30	X.* ±5'	LEO	05/Jul/21	FH03AB01-B0000GY0	FH03AB01		
	DESIGN UNITS mm		CHECKED BY	DATE	TITLE		REV 0	SHEET NO. 1/1
	X.X ±0.20	X.X' ±2'	GISELLE	05/Jul/21	Heavy-duty connector H3A Base shell		THIS DRAWING CONTAINS INFORMATION THAT IS PROPRIETARY TO TXGA INDUSTRIAL ELECTRONICS(S.Z)CO.,LTD AND SHOULD NOT BE USED WITHOUT WRITTEN PERMISSION	
SCALE 5:1	SIZE A4	X.XX ±0.15	X.XX' ±1'	DRAWN BY	DATE			
		X.XXX ±0.10	X.XXX' ±0.5'	PYD	05/Jul/21			