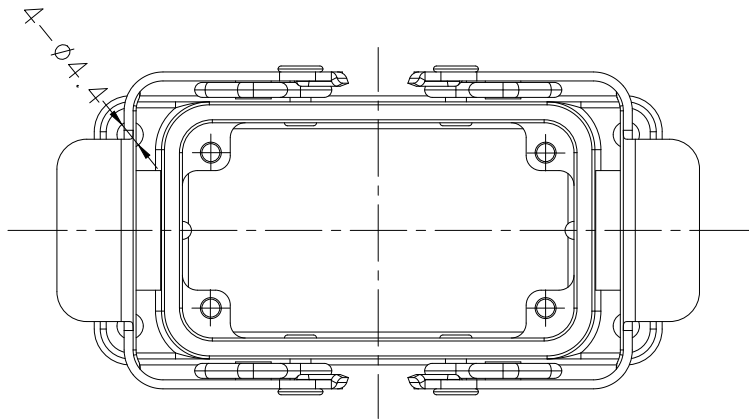


1 2 3 4 5 6 7 8

REV	LOCATIONS	DESCRIPTION	DATE	REVISER	APPD



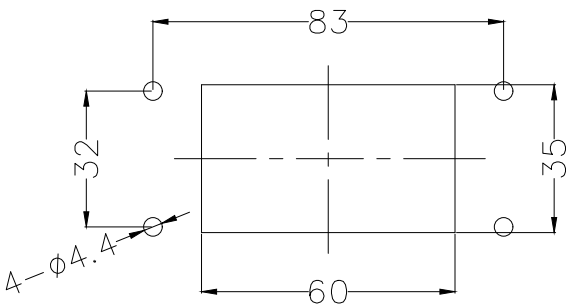
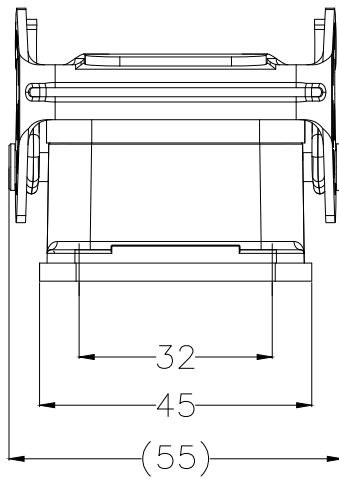
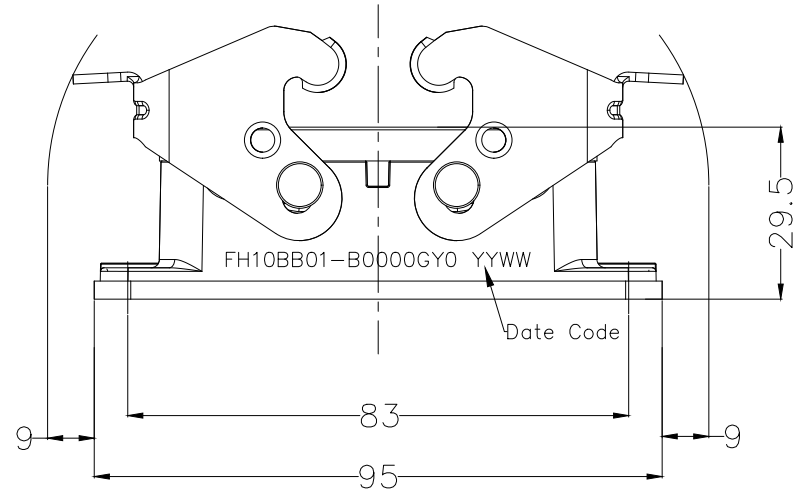
SPECIFICATIONS

Material and Plating

Body: Aluminium die-cast, powder-coated (Grey)
 Locking element: Electroplated zinc
 Sealing element: NBR

Mechanical

Temperature Range-Operating: -40°C ~ +125°C
 Degree of protection: IP65 (sealed state)
 Cable entry: Bottom cable entry



Recommended Panel Layout

<p>THIRD ANGLE PROJECTION</p>	GENERAL TOLERANCES (UNLESS SPECIFIED)		APPROVE BY	DATE	PART NO.	ITEM NO.	<p>Building Technology Cornerstone</p>
	X.X ±0.30	X.* ±5'	LEO	30/JUN/21	FH10BB01-B0000GYO	FH10BB01	
	DESIGN UNITS mm		CHECKED BY	DATE	TITLE		REV 0 SHEET NO. 1/1
	X.X ±0.20	X.X* ±2'	GISELLE	30/JUN/21	Heavy-duty connector H10B Base shell		
SCALE 5:1	SIZE A4	X.XX ±0.15	X.XX* ±1'	DRAWN BY	DATE	THIS DRAWING CONTAINS INFORMATION THAT IS PROPRIETARY TO TXGA INDUSTRIAL ELECTRONICS(S.Z)CO.,LTD AND SHOULD NOT BE USED WITHOUT WRITTEN PERMISSION	
		X.XXX ±0.10	X.XXX* ±0.5'	PYD	30/JUN/21		

1 2 3 4 5 6 7 8