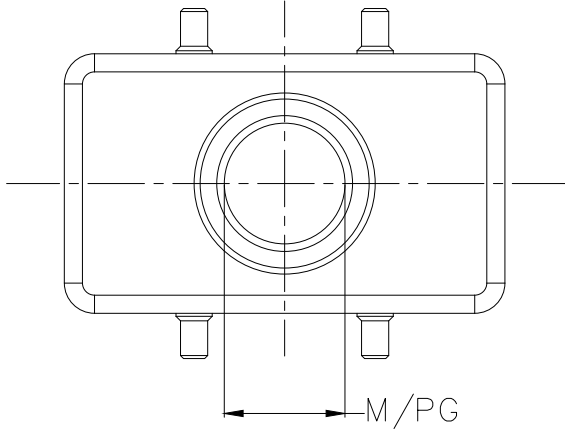


1 2 3 4 5 6 7 8

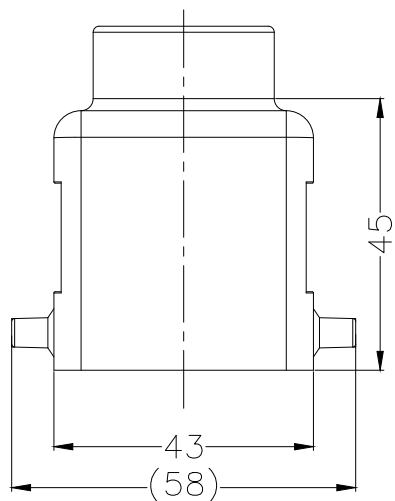
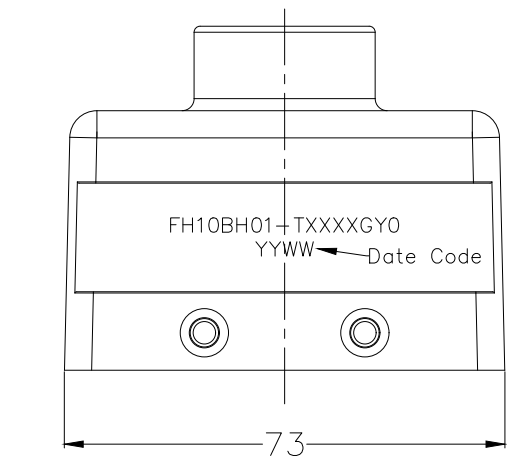
| REV | LOCATIONS | DESCRIPTION | DATE | REVISER | APPD |
|-----|-----------|-------------|------|---------|------|
| | | | | | |



SPECIFICATIONS

Material and Plating
 Body: Aluminium die-cast, powder-coated (Grey)

Mechanical
 Temperature Range-Operating: -40°C~+125°C
 Degree of protection: IP65 (sealed state)
 Cable entry: Top cable entry
 Thread size: M/PG



Ordering Information

FH10B H 01 - T XXXX GY 0
 1 2 3 4 5

1 | Category | 2 | Style | 3 | Cable entry | 4 | Thread specification | 5 | Color

FH10B-Shell | H-Hood | T-Top cable entry | M200-M20, M250-M25, P160-PG16 | GY-Gray

| Part NO. | Thread size |
|-------------------|-------------|
| FH10BH01-TM200GY0 | M20 |
| FH10BH01-TM250GY0 | M25 |
| FH10BH01-TP160GY0 | PG16 |

| | | | | | | | | |
|-------------------------------|---------------------------------------|-------------|--------------|-----------|--------------------------------|----------|--|---------------|
| <p>THIRD ANGLE PROJECTION</p> | GENERAL TOLERANCES (UNLESS SPECIFIED) | | APPROVE BY | DATE | PART NO. | ITEM NO. | <p>Building Technology Cornerstone</p> | |
| | X. ±0.30 | X.* ±5' | LEO | 30/JUN/21 | FH10BH01-TXXXXGY0 | FH10BH01 | | |
| | DESIGN UNITS mm | | CHECKED BY | DATE | TITLE | | REV 0 | SHEET NO. 1/1 |
| | X.X ±0.20 | X.X' ±2' | GISELLE | 30/JUN/21 | Heavy-duty connector H10B Hood | | THIS DRAWING CONTAINS INFORMATION THAT IS PROPRIETARY TO TXGA INDUSTRIAL ELECTRONICS(S.Z)CO.,LTD AND SHOULD NOT BE USED WITHOUT WRITTEN PERMISSION | |
| SCALE 5:1 | SIZE A4 | X.XX ±0.15 | X.XX' ±1' | DRAWN BY | DATE | | | |
| | | X.XXX ±0.10 | X.XXX' ±0.5' | PYD | 30/JUN/21 | | | |

1 2 3 4 5 6 7 8