

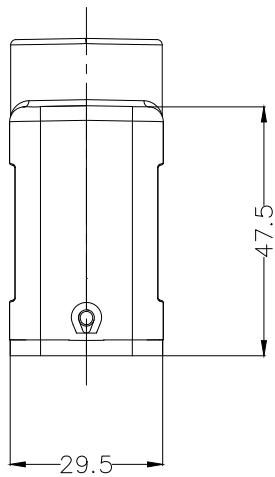
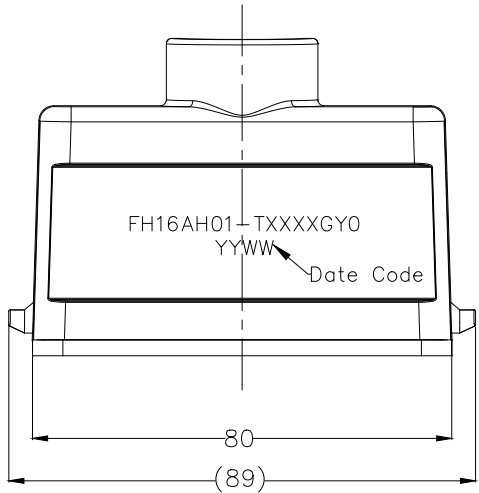
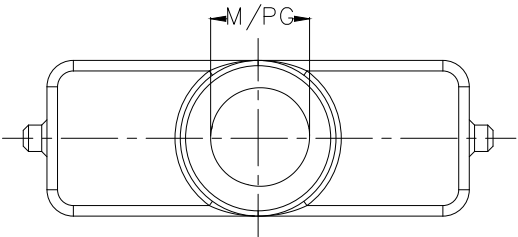
1 2 3 4 5 6 7 8

REV	LOCATIONS	DESCRIPTION	DATE	REVISER	APPD

SPECIFICATIONS

Material
 Body: Aluminium die-cast, powder-coated (Grey)
 Sealing element: NBR

Mechanical
 Temperature Range-Operating: -40°C~+125°C
 Degree of protection: IP65 (sealed state)
 Cable entry: Top cable entry



Ordering Information

FH16A H 01 - T XXXX GY 0
 1 2 3 4 5

1 Category FH16A-Shell 2 Style H-Hood 3 Cable entry T-Top cable entry 4 Thread specification M200-M20 P160-PG16 5 Color GY-Gray

<p>THIRD ANGLE PROJECTION</p>	GENERAL TOLERANCES (UNLESS SPECIFIED)		APPROVE BY	DATE	PART NO.	ITEM NO.	<p>Building Technology Cornerstone</p>	
	X. ±0.30	X.* ±5'	LEO	05/Jul/21	FH16AH01-TXXXXGY0	FH16AH01		
	DESIGN UNITS mm		CHECKED BY	DATE	TITLE		REV 0	SHEET NO. 1/1
	SCALE 5:1	SIZE A4	GISELLE	05/Jul/21	Heavy-duty connector H16A Hood		THIS DRAWING CONTAINS INFORMATION THAT IS PROPRIETARY TO TXGA INDUSTRIAL ELECTRONICS(S.Z)CO.,LTD AND SHOULD NOT BE USED WITHOUT WRITTEN PERMISSION	
X.XX ±0.15	X.XX' ±1'	DRAWN BY	DATE					
X.XXX ±0.10	X.XXX' ±0.5'	PYD	05/Jul/21					

Part NO.	Thread size
FH16AH01-TM250GY0	M20
FH16AH01-TP160GY0	PG16

1 2 3 4 5 6 7 8

A

B

C

D

E

F

A

B

C

D

E

F