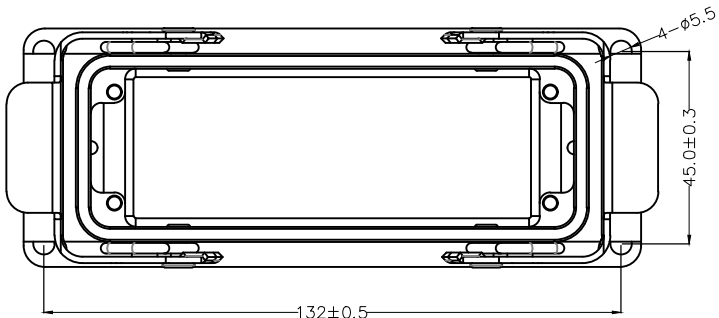


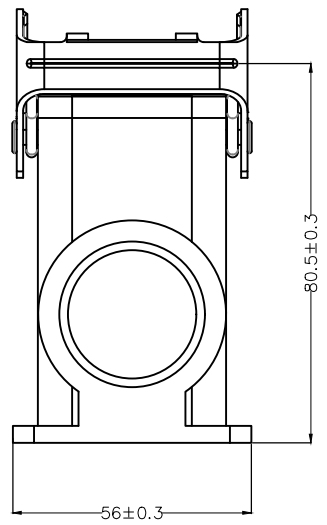
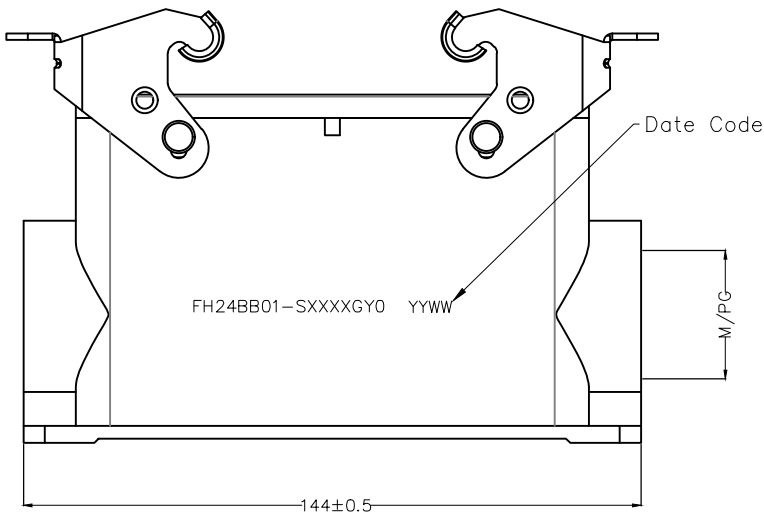
1 2 3 4 5 6 7 8

REV	LOCATIONS	DESCRIPTION	DATE	REVISER	APPD



**SPECIFICATIONS**

**Material**  
 Housing: Aluminium die-cast  
 Surface: Powder-coated  
 Operating Temperature: -40°C ~ +125°C  
 Degree of Protection: IP65(sealed state)  
 Cable entry: Side cable entry  
 Sealing element: NBR  
 Locking element: SPCC



**Ordering Information**

FH24B 1 / B 01 - S / 3 XXXX / 4 GY / 5 0

1 Category  
FH24B-H24B shell

2 Style  
B-Base shell

3 Cable entry  
S-Side cable entry

4 Thread specification  
M320-M32  
M400-M40  
P210-PG21  
P290-PG29

5 Color  
GY-Grey

<p>THIRD ANGLE PROJECTION</p>	<p>GENERAL TOLERANCES (UNLESS SPECIFIED)</p>		<p>APPROVE BY LEO</p>	<p>DATE 02/AUG/24</p>	<p>PART NO. FH24BB01-SXXXXGY0</p>	<p>ITEM NO. FH24BB01</p>	<p>Building Technology Cornerstone</p>	
	<p>DESIGN UNITS METRIC</p>	<p>X. ±0.30</p>	<p>X.* ±5°</p>	<p>CHECKED BY GISELLE</p>	<p>DATE 02/AUG/24</p>	<p>TITLE Heavy-duty connector, Base shell</p>		<p>REV 0</p>
<p>SCALE 5:1</p>	<p>SIZE A4</p>	<p>X.XX ±0.15</p>	<p>X.XX* ±1°</p>	<p>DRAWN BY NICK</p>	<p>DATE 02/AUG/24</p>	<p>THIS DRAWING CONTAINS INFORMATION THAT IS PROPRIETARY TO TXGA INDUSTRIAL ELECTRONICS(S.Z)CO.,LTD AND SHOULD NOT BE USED WITHOUT WRITTEN PERMISSION</p>		

1 2 3 4 5 6 7 8