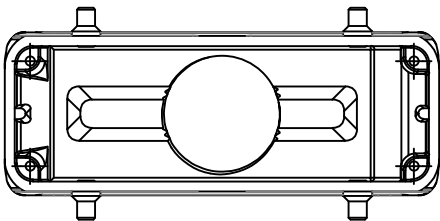
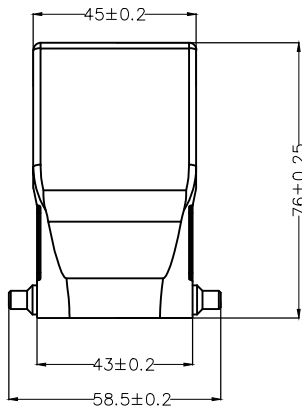
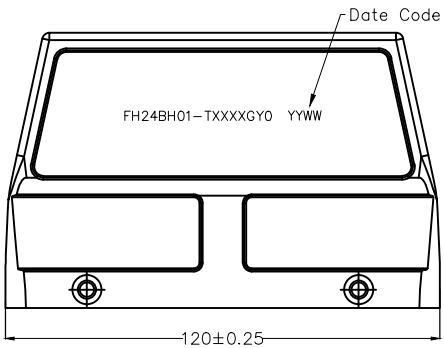
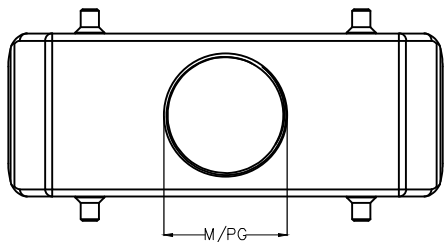


1 2 3 4 5 6 7 8

REV	LOCATIONS	DESCRIPTION	DATE	REVISER	APPD



**SPECIFICATIONS**

Material  
 Housing: Aluminium die-cast  
 Surface: Powder-coated  
 Operating Temperature: -40°C ~ +125°C  
 Degree of Protection: IP65(sealed state)  
 Locking element: SPCC

**Ordering Information**

FH24B H 01 T XXXX GY 0  
 1 2 3 4 5

1   Category FH24B-H24B shell	2   Style H-Hood	3   Cable entry T-Top cable entry	4   Thread specification M320-M32 M400-M40 P210-PG21 P290-PG29	5   Color GY-Grey
----------------------------------	---------------------	--------------------------------------	--	----------------------

<p>THIRD ANGLE PROJECTION</p>	<p>GENERAL TOLERANCES (UNLESS SPECIFIED)</p>		<p>APPROVE BY LEO</p>	<p>DATE 02/AUG/24</p>	<p>PART NO. FH24BH01-TXXXXGYO</p>	<p>ITEM NO. FH24BH01</p>	<p>Building Technology Cornerstone</p>	
	<p>DESIGN UNITS METRIC</p>	<p>X. ±0.30</p>	<p>X.* ±5'</p>	<p>CHECKED BY GISELLE</p>	<p>DATE 02/AUG/24</p>	<p>TITLE Heavy-duty connector,Hood</p>		<p>REV 0</p>
<p>SCALE 5:1</p>	<p>SIZE A4</p>	<p>X.XX ±0.15</p>	<p>X.XX' ±1'</p>	<p>DRAWN BY NICK</p>	<p>DATE 02/AUG/24</p>	<p>THIS DRAWING CONTAINS INFORMATION THAT IS PROPRIETARY TO TXGA INDUSTRIAL ELECTRONICS(S,Z)CO.,LTD AND SHOULD NOT BE USED WITHOUT WRITTEN PERMISSION</p>		

1 2 3 4 5 6 7 8

A  
B  
C  
D  
E  
F

A  
B  
C  
D  
E  
F