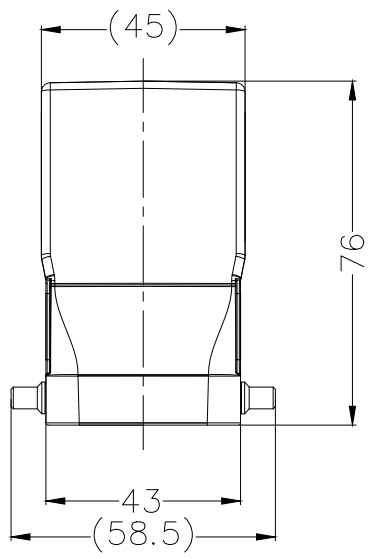
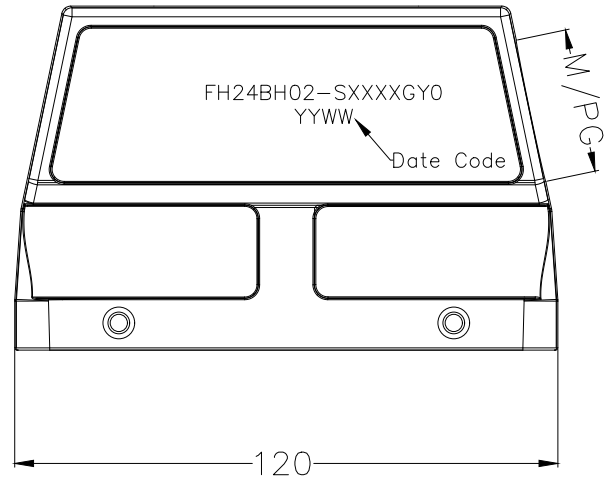
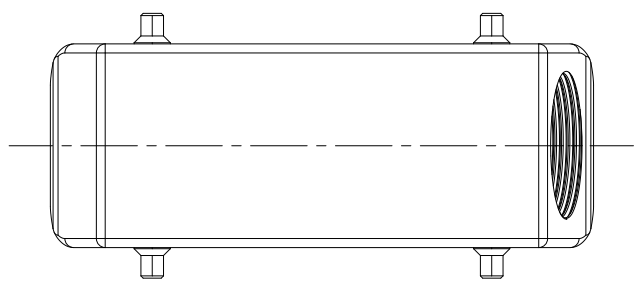


1 2 3 4 5 6 7 8

REV	LOCATIONS	DESCRIPTION	DATE	REVISER	APPD

SPECIFICATIONS

Material
 Body: Aluminium die-cast, powder-coated (Grey)
 Mechanical
 Temperature Range-Operating: -40°C ~ +125°C
 Degree of protection: IP65 (sealed state)
 Cable entry: Side cable entry



Ordering Information

FH24B H 02 S XXXX GY 0
 1 2 3 4 5

Part NO.	Thread size
FH24BH02-SM250GYO	M25
FH24BH02-SM320GYO	M32
FH24BH02-SM400GYO	M40
FH24BH02-SP210GYO	PG21
FH24BH02-SP290GYO	PG29

1 Category
 FH24B-Shell

2 Style
 H-Hood

3 Cable entry
 S-Side cable entry

4 Thread specification
 M250-M25
 M320-M32
 M400-M40
 P210-PG21
 P290-PG29

5 Color
 GY-Gray

<p>THIRD ANGLE PROJECTION</p>	GENERAL TOLERANCES (UNLESS SPECIFIED)		APPROVE BY	DATE	PART NO.	ITEM NO.	<p>Building Technology Cornerstone</p>	
	X. ±0.30	X.* ±5'	LEO	05/Jul/21	FH24BH02-SXXXXGYO	FH24BH02		
	DESIGN UNITS mm		CHECKED BY	DATE	TITLE		REV 0	SHEET NO. 1/1
	SCALE 5:1	SIZE A4	GISELLE	05/Jul/21	Heavy-duty connector H24B Hood		THIS DRAWING CONTAINS INFORMATION THAT IS PROPRIETARY TO TXGA INDUSTRIAL ELECTRONICS(S.Z)CO.,LTD AND SHOULD NOT BE USED WITHOUT WRITTEN PERMISSION	
		X.XX ±0.15	X.XX' ±1'	DRAWN BY	DATE			
		X.XXX ±0.10	X.XXX' ±0.5'	PYD	05/Jul/21			

1 2 3 4 5 6 7 8