

1 2 3 4 5 6 7 8

REV	LOCATIONS	DESCRIPTION	DATE	REVISER	APPD

**SPECIFICATION**

**Technical Parameters**

- No. of contact: 2
- Rated current: 100A
- Rated voltage: 1000V
- Rated impulse voltage: 8KV
- Contact resistance: 0.3mΩ MAX
- Rated voltage acc.to UL: 600V
- Insulation resistance: 10<sup>10</sup>Ω MIN
- Temperature range: -40°C~+125°C
- Pollution degree: 3
- Wire gauge: 10-25mm<sup>2</sup>
- Stripping length: 13mm
- Tightening Torque:
  - 10-16mm<sup>2</sup>(6N.m);
  - 25mm<sup>2</sup>(7N.m);
  - 35mm<sup>2</sup>(8N.m)

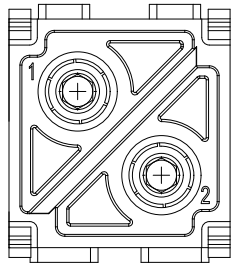
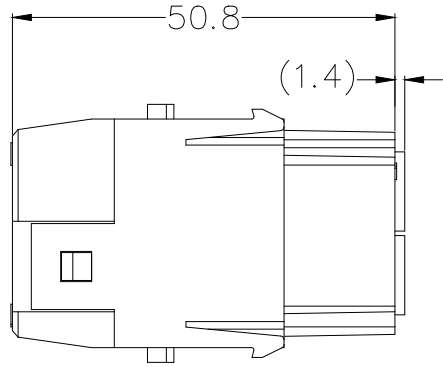
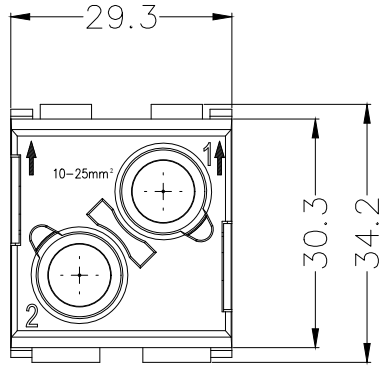
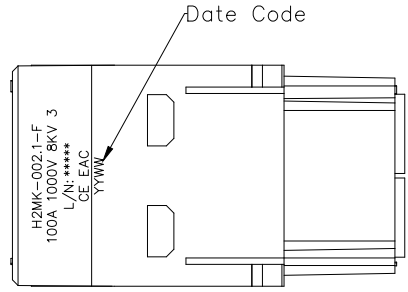
Wrench Size: SW 4

**Mechanical**

- Connection method: Screw locking
- Durability: 500 cycles MIN

**Material and Plating**

- Insulators: PC(UL 94V-0), Light grey
- Terminal: copper alloy, 3μm silver plated
- Screw: Iron nickel plated



A  
B  
C  
D  
E  
F

A  
B  
C  
D  
E  
F

1 2 3 4 5 6 7 8

<p>THIRD ANGLE PROJECTION</p>	GENERAL TOLERANCES (UNLESS SPECIFIED)		APPROVE BY	DATE	PART NO.	ITEM NO.	<p>Building Technology Cornerstone</p>	
	X. ±0.30	X.* ±5'	LEO	05/Jul/21	FH2MK002-F0024GYE0	FH2MK001		
	DESIGN UNITS mm		CHECKED BY	DATE	TITLE		REV 0	SHEET NO. 1/1
	X.X ±0.20	X.X' ±2'	GISELLE	05/Jul/21	Heavy-duty connector H2MK Insert			
SCALE 5:1	SIZE A4	X.XX ±0.15	X.XX' ±1'	DRAWN BY	DATE	THIS DRAWING CONTAINS INFORMATION THAT IS PROPRIETARY TO TXGA INDUSTRIAL ELECTRONICS(S.Z)CO.,LTD AND SHOULD NOT BE USED WITHOUT WRITTEN PERMISSION		
		X.XXX ±0.10	X.XXX' ±0.5'	PYD	05/Jul/21			