

1 2 3 4 5 6 7 8

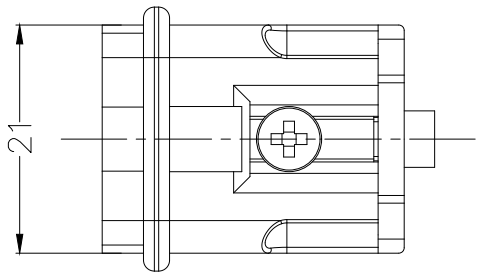
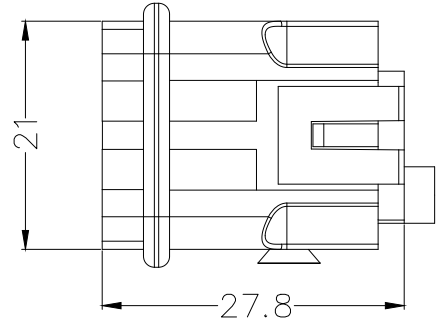
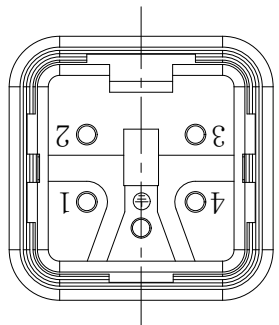
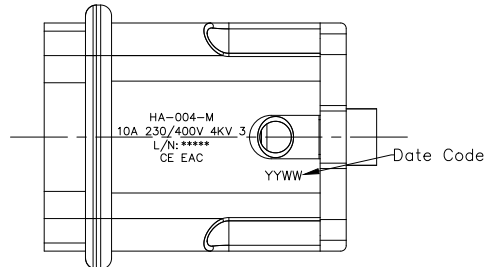
REV	LOCATIONS	DESCRIPTION	DATE	REVISER	APPD

SPECIFICATION

Technical Parameters
 No. of contact: 4+PE
 Rated current: 10A
 Phase-to-earth rated voltage: 230V
 Phase-to-phase rated voltage: 400V
 Rated impulse voltage: 4KV
 Contact resistance: 1mΩ MAX
 Wire gauge: 0.75-1.5mm² (18-16 AWG)
 Stripping length: 4.5mm
 Tightening Torque: 0.25N.m
 Insulation resistance: 10¹⁰Ω MIN
 Temperature range: -40°C~+125°C
 Pollution degree: 3

Mechanical
 Connection method: Screw locking
 Durability: 500 cycles MIN

Material and Plating
 Insulators: PC(UL 94V-0), Light grey
 Terminal: copper alloy, 1μm silver plated
 Clamping Screw: Brass
 Mounting Screw: Iron nickel plated
 Sealing element: NBR



<p>THIRD ANGLE PROJECTION</p>	GENERAL TOLERANCES (UNLESS SPECIFIED)		APPROVE BY	DATE	PART NO.	ITEM NO.	<p>Building Technology Cornerstone</p>	
	X. ±0.30	X.* ±5'	LEO	05/Jul/21	FHA00001-M0044GYE0	FHA00001		
	DESIGN UNITS mm		CHECKED BY	DATE	TITLE		REV 0	SHEET NO. 1/1
	X.X ±0.20	X.X' ±2'	GISELLE	05/Jul/21	Heavy-duty connector HA Insert			
SCALE 5:1	SIZE A4	X.XX ±0.15	X.XX' ±1'	DRAWN BY	DATE	THIS DRAWING CONTAINS INFORMATION THAT IS PROPRIETARY TO TXGA INDUSTRIAL ELECTRONICS(S.Z)CO.,LTD AND SHOULD NOT BE USED WITHOUT WRITTEN PERMISSION		
		X.XXX ±0.10	X.XXX' ±0.5'	PYD	05/Jul/21			

1 2 3 4 5 6 7 8

A

B

C

D

E

F

A

B

C

D

E

F