

1 2 3 4 5 6 7 8

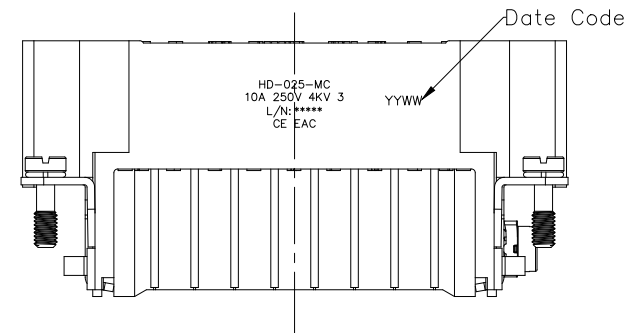
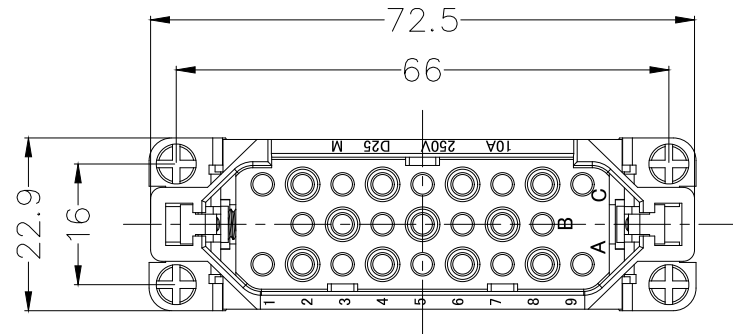
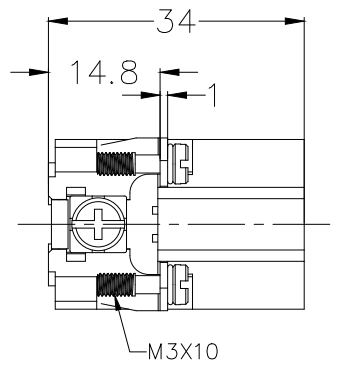
REV	LOCATIONS	DESCRIPTION	DATE	REVISER	APPD

SPECIFICATION

Technical Parameters  
 No. of contact: 25+PE  
 Rated current: 10A  
 Rated voltage: 250V  
 Rated impulse voltage: 4KV  
 Insulation resistance:  $10^{10}\Omega$  MIN  
 Temperature range:  $-40^{\circ}\text{C}\sim+125^{\circ}\text{C}$   
 Pollution degree: 3

Mechanical  
 Connection method: Riveting  
 Durability: 500 cycles MIN

Material and Plating  
 Insulators: PC(UL 94V-0), Light grey  
 Screw: Iron nickel plated  
 Panel Mounting Bracket: Stainless Steel



A  
B  
C  
D  
E  
F

A  
B  
C  
D  
E  
F

<p>THIRD ANGLE PROJECTION</p>	GENERAL TOLERANCES (UNLESS SPECIFIED)		APPROVE BY	DATE	PART NO.	ITEM NO.	<p>Building Technology Cornerstone</p>
	X. ±0.30	X.* ±5'	LEO	05/Jul/21	FHD00001-M0250GY00	FHD00001	
	DESIGN UNITS mm		CHECKED BY	DATE	TITLE		REV 0    SHEET NO. 1/1
	X.X ±0.20	X.X' ±2'	GISELLE	05/Jul/21	Heavy-duty connector HD Insert		
SCALE 5:1	SIZE A4	X.XX ±0.15	X.XX' ±1'	DRAWN BY	DATE	THIS DRAWING CONTAINS INFORMATION THAT IS PROPRIETARY TO TXGA INDUSTRIAL ELECTRONICS(S.Z)CO.,LTD AND SHOULD NOT BE USED WITHOUT WRITTEN PERMISSION	
X.XXX ±0.10	X.XXX' ±0.5'	PYD	05/Jul/21				

1 2 3 4 5 6 7 8