

1 2 3 4 5 6 7 8

REV	LOCATIONS	DESCRIPTION	DATE	REVISER	APPD

SPECIFICATION

Technical Parameters

No. of contact: 25+PE
 Rated current: 10A
 Rated voltage: 250V
 Rated impulse voltage: 4KV
 Insulation resistance: $10^{10}\Omega$ MIN
 Temperature range: $-40^{\circ}\text{C}\sim+125^{\circ}\text{C}$
 Pollution degree: 3

Mechanical

Connection method: Riveting
 Durability: 500 cycles MIN

Material and Plating

Insulators: PC(UL 94V-0), Light grey
 Screw: Iron nickel plated
 Panel Mounting Bracket: Stainless Steel

A

B

C

D

E

F

A

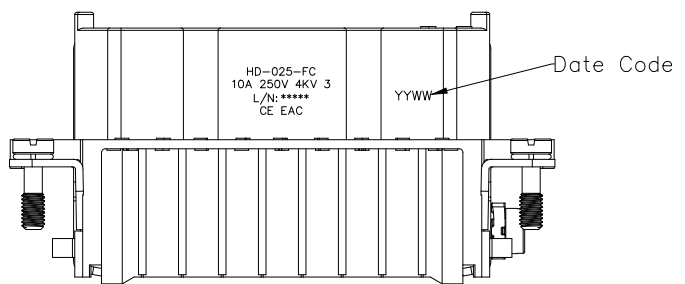
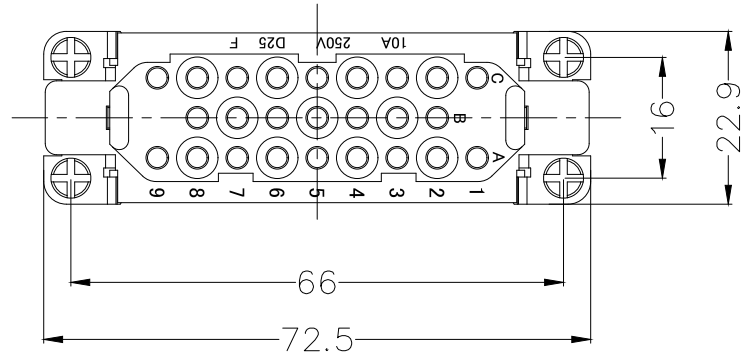
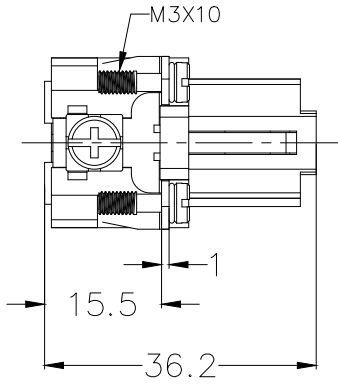
B

C

D

E

F



<p>THIRD ANGLE PROJECTION</p>	GENERAL TOLERANCES (UNLESS SPECIFIED)		APPROVE BY	DATE	PART NO.	ITEM NO.	<p>Building Technology Cornerstone</p>	
	X. ±0.30	X.* ±5'	LEO	05/Jul/21	FHD00002-F0250GY00	FHD00002		
	DESIGN UNITS mm		CHECKED BY	DATE	TITLE		REV 0	SHEET NO. 1/1
	SCALE 5:1	SIZE A4	GISELLE	05/Jul/21	Heavy-duty connector HD Insert		THIS DRAWING CONTAINS INFORMATION THAT IS PROPRIETARY TO TXGA INDUSTRIAL ELECTRONICS(S.Z)CO.,LTD AND SHOULD NOT BE USED WITHOUT WRITTEN PERMISSION	
		X.XX ±0.15	X.XX' ±1'	DRAWN BY	DATE			
		X.XXX ±0.10	X.XXX' ±0.5'	PYD	05/Jul/21			

1 2 3 4 5 6 7 8