

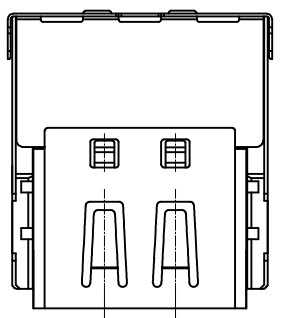
SPECIFICATIONS

Electrical
 Current Rating: 0.5A AC(rms)/DC
 Voltage Rating: 40V AC(rms)/DC
 Contact Resistance: 30 mΩ Max
 Insulation Resistance: 100 MΩ Min
 Withstanding Voltage: 500V AC r.m.s
 Temperature Range-Operating: -40°C~+105°C

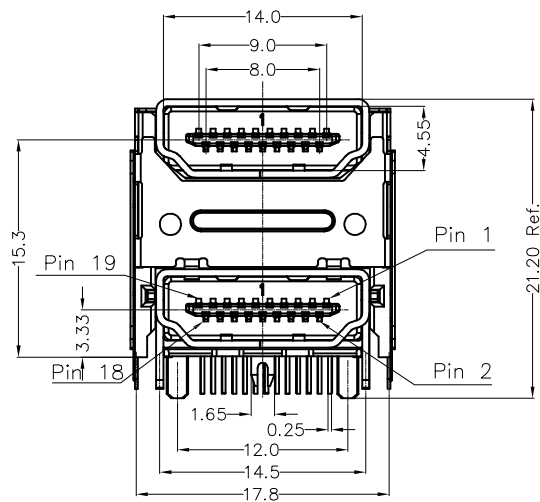
Mechanical
 Insertion Force: 4.5kgf Max.
 Withdrawal Force: 1.0~4.0kgf

Material and Finish
 Housing: LCP (UL 94V-0) Black
 Contact: Copper Alloy/ Gold on contact area,
 tin on tail
 Shell: Copper Alloy/ Nickel plated

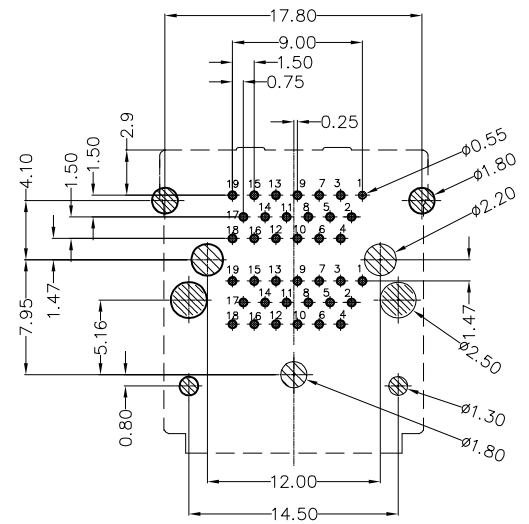
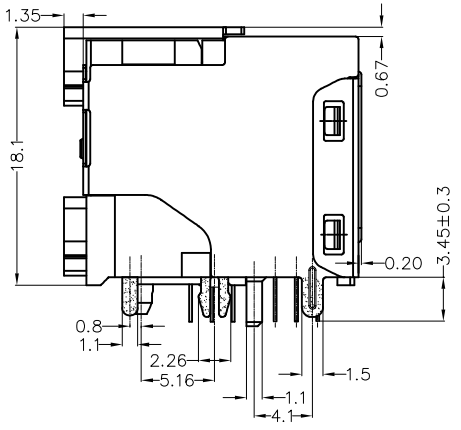
| REV | LOCATIONS | DESCRIPTION | DATE | REVISER | APPD |
|-----|-----------|----------------|-----------|---------|--------|
| 1 | | Update drawing | 08/SEP/22 | MATT | CHERRY |



5.00



21.20 Ref.



Recommended P.C.Board Layout

Tolerance: ±0.05

Ordering Information

FHD 23 — F D B 3 XX K6 K
 1 2 3 4 5 6 7 8 9

| | | | | |
|--|---|------------------------------|----------------------------|-----------------------------|
| 1 Series Name FHD-HDMI | 2 Distinction No 23 | 3 Type F-Female | 4 Assembly Layout D-DIP | 5 Entry Type B-90° Angle |
| 6 Plating 3-Selective gold on contact area, tin on tail | 7 Thickness of Plating 00-Gold Flash 01-1u"; 05-5u" Custom Plate Available | 8 Plastic Colour K6-Black | 9 Packaging K-Tray | |

| | | | | | | | |
|-------------------------------|---------------------------------------|------------|----------------------|-------------------|--|-------------------|--|
| <p>THIRD ANGLE PROJECTION</p> | GENERAL TOLERANCES (UNLESS SPECIFIED) | | APPROVE BY FRANK | DATE 09/OCT/16 | PART NO. FHD23-FDB3XXK6K | ITEM NO. FHD23 | <p>Building Technology Cornerstone</p> |
| | X.±0.30 | X.±5° | CHECKED BY CHERRY | DATE 09/OCT/16 | TITLE HDMI A/F 90° (DIP) | | |
| DESIGN UNITS Metric | X.X±0.20 | .X'±2° | DRAWN BY KATE | DATE 09/OCT/16 | THIS DRAWING CONTAINS INFORMATION THAT IS PROPRIETARY TO TXGA INDUSTRIAL ELECTRONICS(S.Z)CO.,LTD AND SHOULD NOT BE USED WITHOUT WRITTEN PERMISSION | | |
| SCALE 5:1 | SIZE A4 | X.XX±0.15 | | | | | |
| | | X.XXX±0.10 | | | | | |