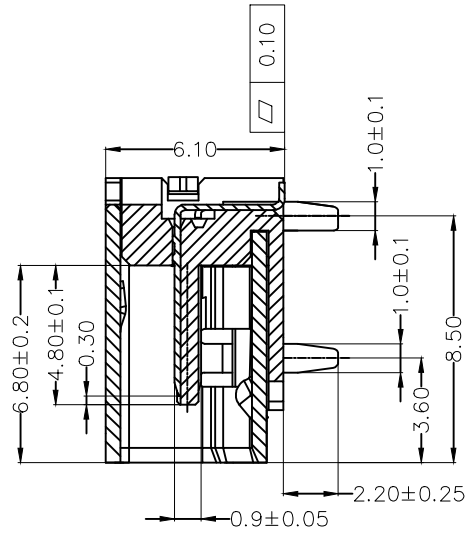
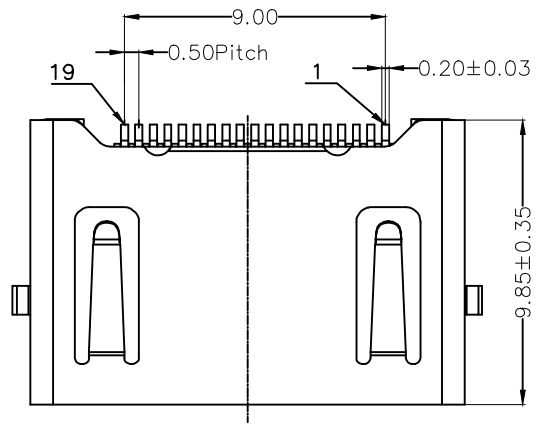


REV	LOCATIONS	DESCRIPTION	DATE	REVISER	APPD



SPECIFICATIONS

Electrical

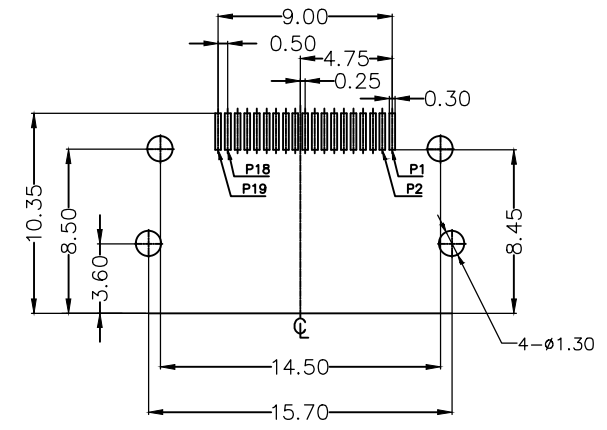
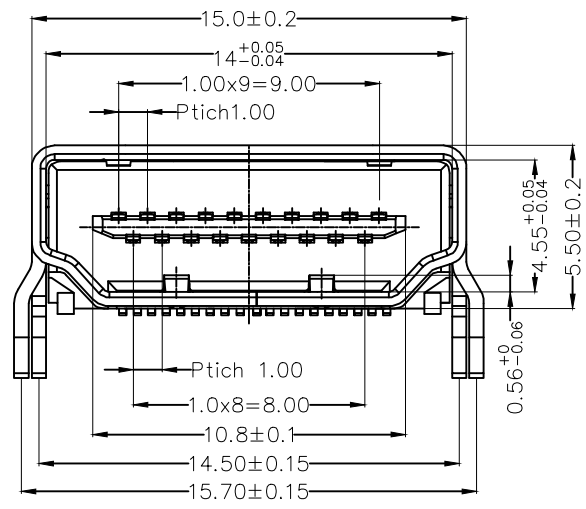
Current Rating: 0.5A AC(rms)/DC
 Voltage Rating: 40V AC(rms)/DC
 Contact Resistance: 10 mΩ Max
 Insulation Resistance: 100 MΩ Min
 Withstanding Voltage: 500V AC r.m.s
 Temperature Range—Operating: -40°C~+105°C

Mechanical

Insertion Force: 4.5kgf Max.
 Withdrawal Force: 1.0~4.0kgf

Material and Finish

Housing: LCP (UL 94V-0) Black
 Contact: Brass/ Gold in contact area, Bright tin on tail
 Shell: Brass/ Nickel plated



Recommended P.C.Board Layout
 General tolerances: ±0.05mm

<p>THIRD ANGLE PROJECTION</p>	GENERAL TOLERANCES (UNLESS SPECIFIED)		APPROVE BY FRANK	DATE 09/OCT/18	PART NO. FHD28-FSB300BKK	ITEM NO. FHD28	<p>Leader Of Industry</p>
	X.±.012(0.30)	X.±5°	CHECKED BY KATE	DATE 09/OCT/18	TITLE HDMI A/F 90° SMT		
DESIGN UNITS Inch (metric)	X.X±.008(0.20)	.X'±2°	DRAWN BY CHERRY	DATE 09/OCT/18	THIS DRAWING CONTAINS INFORMATION THAT IS PROPRIETARY TO TXGA INDUSTRIAL ELECTRONICS(S.Z)CO.,LTD AND SHOULD NOT BE USED WITHOUT WRITTEN PERMISSION		
SCALE 5:1	SIZE A4	X.XX±.006(0.15)	X.XX'±1°	X.XXX±.004(0.10)	.XXX'±0.5°	F	