

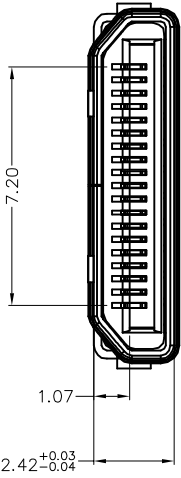
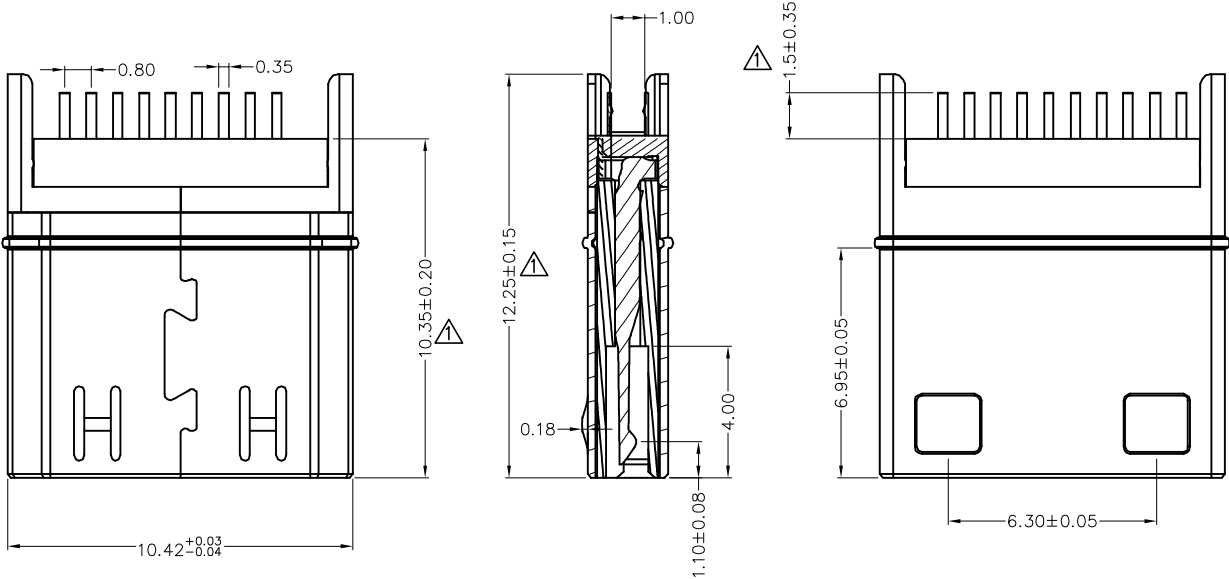
REV	LOCATIONS	DESCRIPTION	DATE	REVISER	APPD
1	△	Change dimension and tolerance	22/JUN/22	MATT	CHERRY

SPECIFICATIONS

Electrical
 Current Rating: 1.0A AC(rms)/DC
 Voltage Rating: 30V AC(rms)/DC
 Contact Resistance: 30 mΩ Max
 Insulation Resistance: 100 MΩ Min
 Withstanding Voltage: 100V AC(rms)/DC
 Temperature Range—Operating: -20°C~+80°C

Mechanical
 Mating Force: 35N Max
 Unmating Force: 10N (Initial) 8N(After 1000) Min
 Mechanical cycles: 10000 cycles

Material
 Housing: LCP (UL 94V-0), Color: Black
 Contacts: Phosphor Bronze/ Gold flash on contact area
 and tin plated on tails area
 Shell: SPCC/Gold Plated



 THIRD ANGLE PROJECTION	GENERAL TOLERANCES (UNLESS SPECIFIED)		APPROVE BY FRANK	DATE 17/MAR/22	PART NO. FHD30-MCS300BKK	ITEM NO. FHD30	 Leader Of Industry
	X. ±0.30	X.* ±5°	CHECKED BY CHERRY	DATE 17/MAR/22	TITLE Mini HDMI 19 Circuits 180° Vertical Male (Splint welding)		
DESIGN UNITS Metric	X.X ±0.20	X.X* ±2°	DRAWN BY MATT	DATE 17/MAR/22	THIS DRAWING CONTAINS INFORMATION THAT IS PROPRIETARY TO TXGA INDUSTRIAL ELECTRONICS(S.Z)CO.,LTD AND SHOULD NOT BE USED WITHOUT WRITTEN PERMISSION		REV 0
SCALE 1:1	SIZE A4	X.XX ±0.15	X.XX* ±1°				SHEET NO. 1/1
		X.XXX ±0.10	X.XXX* ±0.5°				